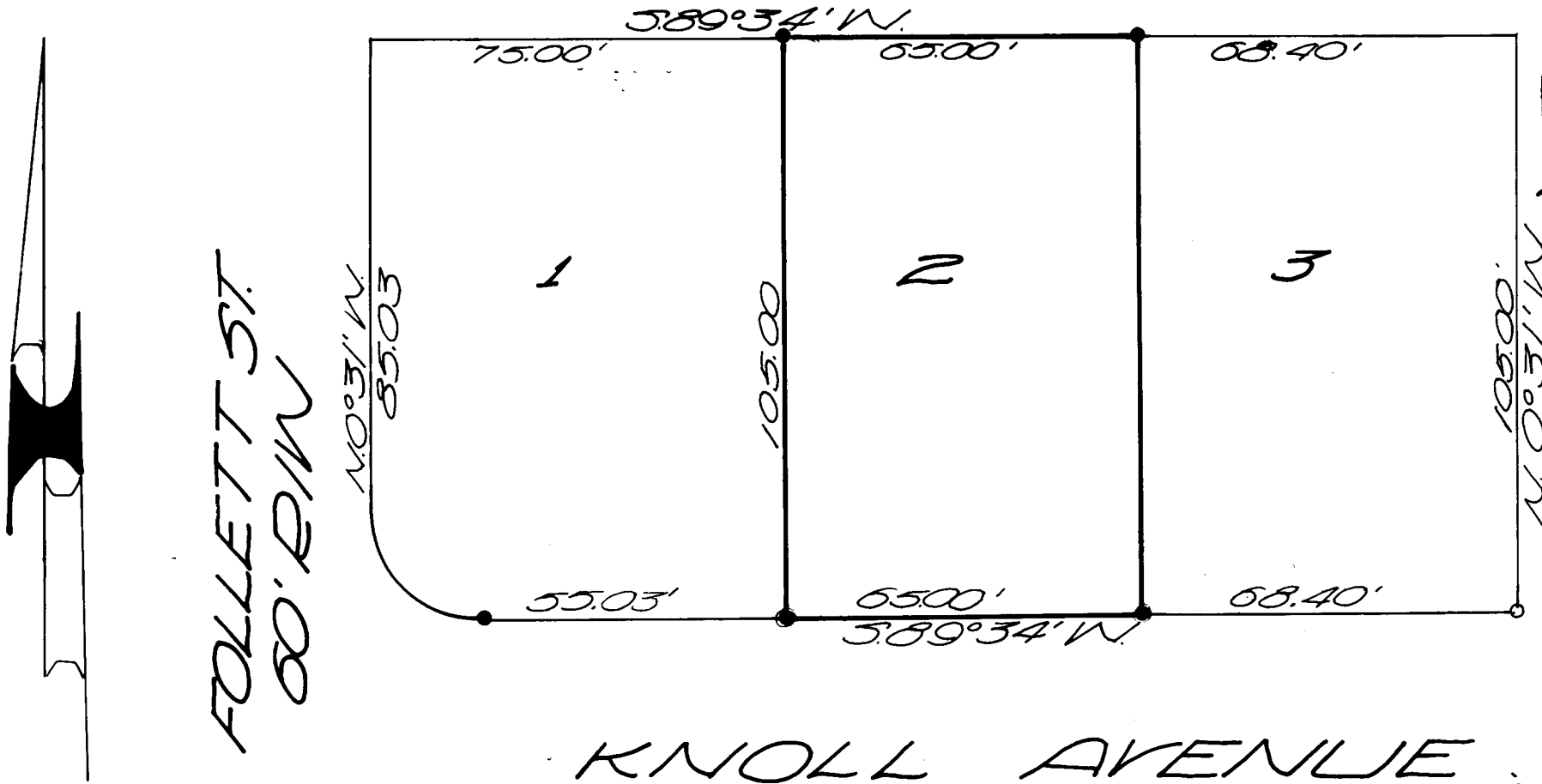


PROPERTY COR. RESTORATION OF LOT 2
 BLK. 9, 1ST ADD. TO NEWTON CR. HOME SITES
 SURVEYED FOR RAYMOND E. BAGWELL JUNE 2, 1967
 SURVEYED BY BAUGHMAN SURVEYING SERVICE



REGISTERED
 OREGON
 LAND SURVEYOR

Glenn S. Baughman

JULY 14, 1961
 GLENN S. BAUGHMAN
 536

FOLLETT ST.
 80' E/W

KNOLL AVENUE

SCALE 1" = 30'

LEGEND

- 5/8" IRON ROD FOUND
- 5/8" IRON ROD SET

COUNTY SURVEYORS FILE DATA
 DO NOT REMOVE FROM OFFICE

COUNTY SURVEYORS FILE DATA
 DO NOT REMOVE FROM OFFICE

FILED
 RECEIVED

JUN 20 1967

COUNTY SURVEYOR
 DOUGLAS COUNTY, ORE.