

COUNTY SURVEYORS FILE DATA
DO NOT REMOVE FROM OFFICE

FILED
RECEIVED

APR 14 1977

COUNTY SURVEYOR
DOUGLAS COUNTY, ORE.

N 59° 21' W
NORTH EAST CORNER
SECTION 50
TOWNSHIP 22 SOUTH,
RANGE 13 WEST, W.M.



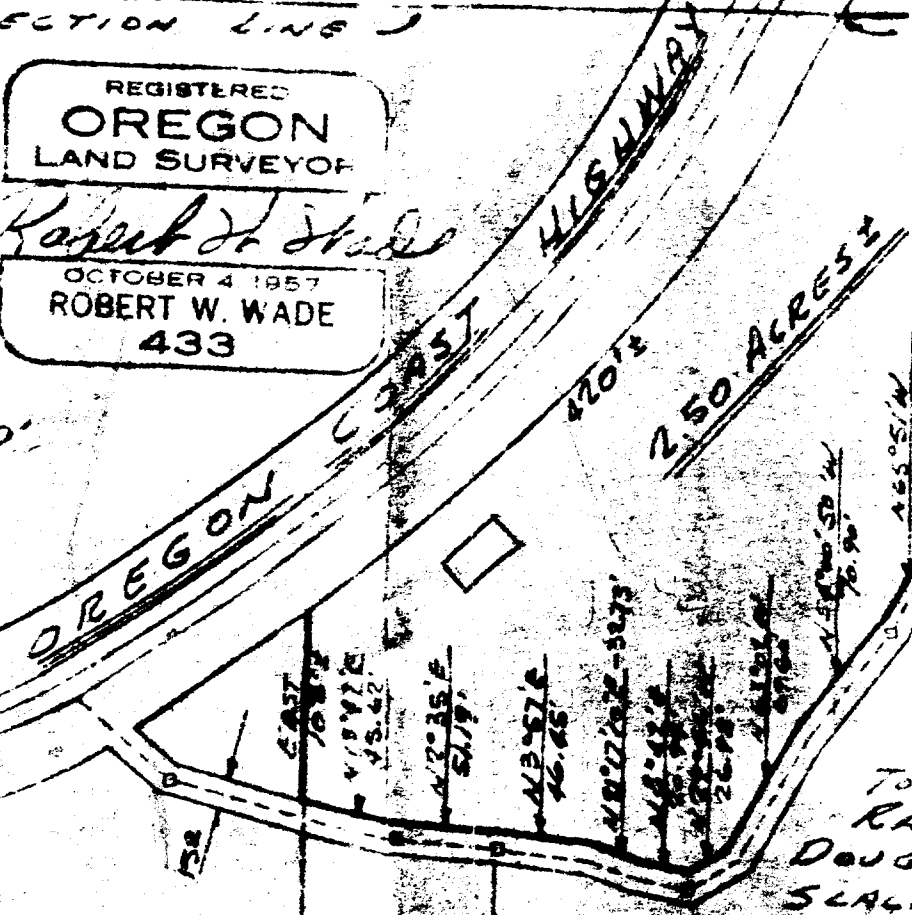
SCALE: 1"=100'

REGISTERED
OREGON
LAND SURVEYOR
Robert W. Wade
OCTOBER 4 1957
ROBERT W. WADE
433

S 0° 14' E 1054.09'

SECTION LINE

290'



ROADWAY SURVEY
IN SECTION 50

TOWNSHIP 22 SOUTH,
RANGE 13 WEST, W.M.,
DOUGLAS COUNTY, OREGON

SCALE: 1"=100' 8-30-68
BY ADOLPH SCHUTTBELE

A ■ HARLAN ■ GESSFORD
ARCHITECTS
5TH & HIGHLAND

■ ERICHSEN
ENGINEER
COOS BAY OREGON

CLM 55/38-5