

FILED
RECEIVED

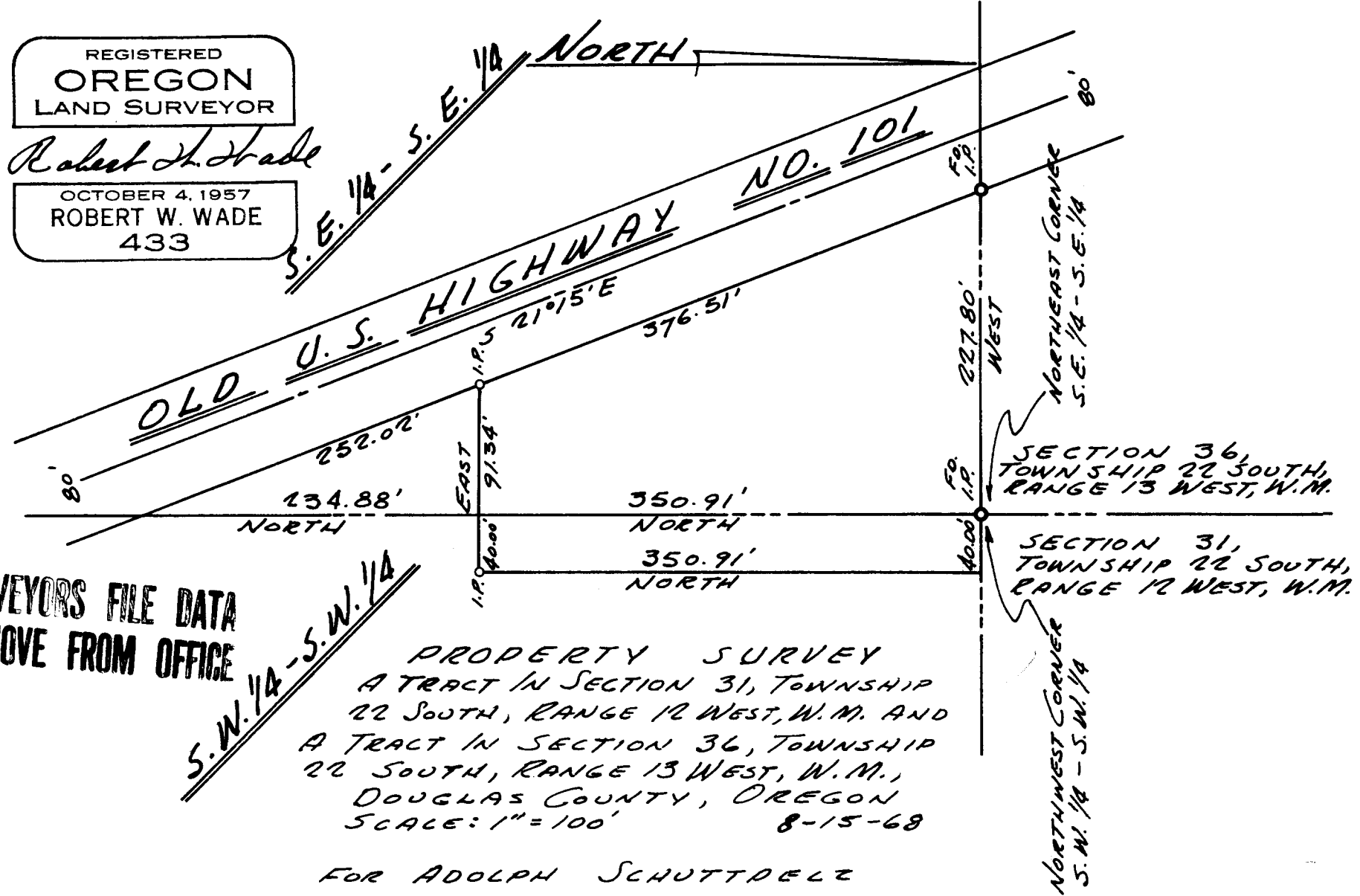
SEP 1 1968

COUNTY SURVEYOR
DOUGLAS COUNTY, ORE.

REGISTERED
OREGON
LAND SURVEYOR

Robert W. Wade

OCTOBER 4, 1957
ROBERT W. WADE
433



COUNTY SURVEYORS FILE DATA
DO NOT REMOVE FROM OFFICE

PROPERTY SURVEY
A TRACT IN SECTION 31, TOWNSHIP
22 SOUTH, RANGE 12 WEST, W.M. AND
A TRACT IN SECTION 36, TOWNSHIP
22 SOUTH, RANGE 13 WEST, W.M.,
DOUGLAS COUNTY, OREGON
SCALE: 1" = 100' 8-15-68

FOR ADOLPH SCHUTTDELTZ

A ■ HARLAN ■ GESSFORD
ARCHITECTS
5TH & HIGHLAND

■ ERICHSEN
ENGINEER
COOS BAY OREGON