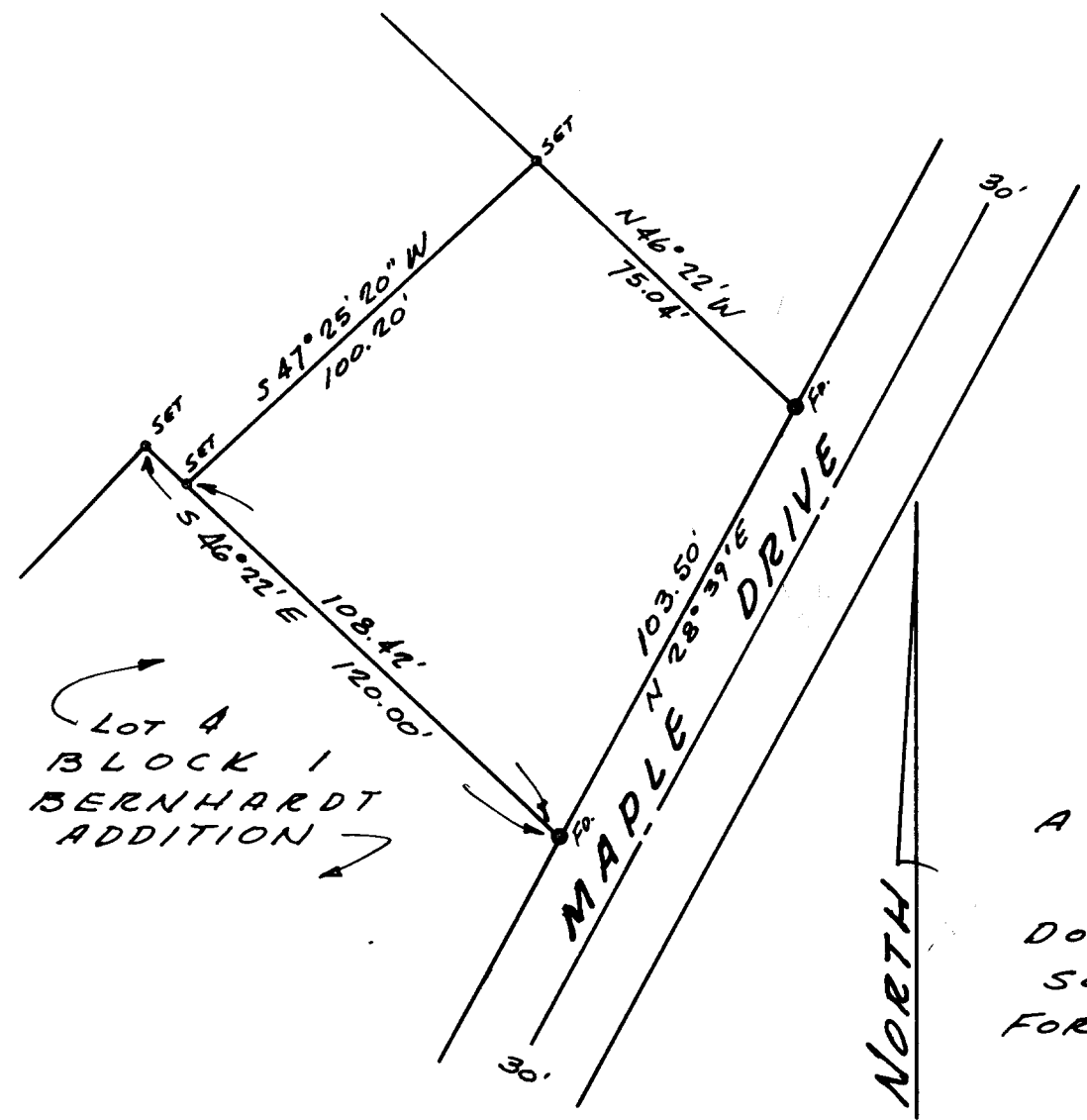


FILED
RECEIVED

SEP 11 1968

COUNTY SURVEYOR
DOUGLAS COUNTY, ORE.



Lot 4
BLOCK 1
BERNHARDT
ADDITION

REGISTERED
OREGON
LAND SURVEYOR
Robert H. Wade
OCTOBER 4, 1957
ROBERT W. WADE
433

COUNTY SURVEYORS FILE DATA
DO NOT REMOVE FROM OFFICE

PROPERTY SURVEY
A TRACT IN SECTION 4,
TOWNSHIP 22 SOUTH,
RANGE 12 WEST, W.M.),
DOUGLAS COUNTY, OREGON
SCALE: 1" = 40' 10-11-67
FOR ARNOLD S. HOUSEN

A ■ HARLAN ■ GESSFORD
ARCHITECTS
5TH & HIGHLAND

■ ERICHSEN
ENGINEER
COOS BAY OREGON