

FILED
RECEIVED

SEP 1 1958

COUNTY SURVEYOR
DOUGLAS COUNTY, ORE.

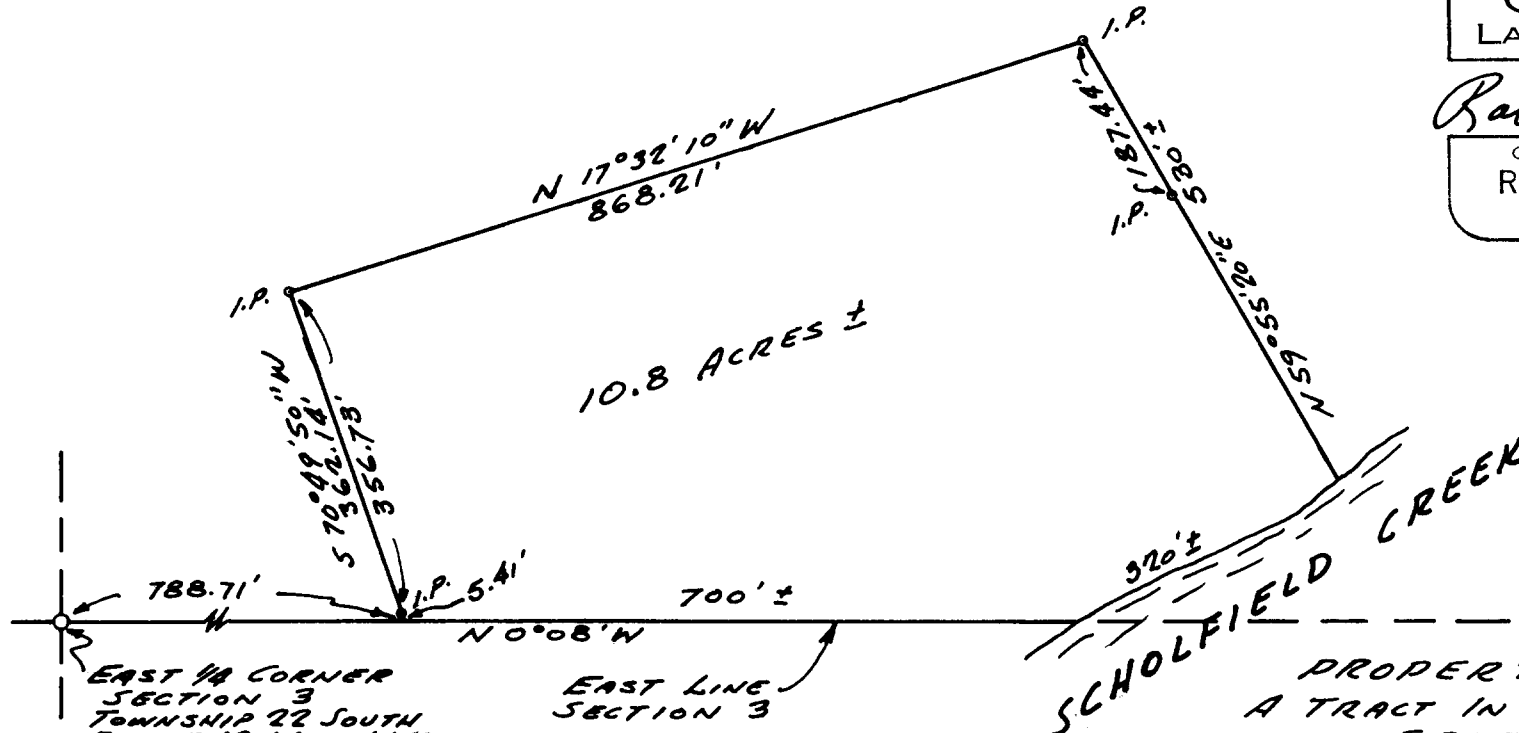
COUNTY SURVEYORS FILE DATA
DO NOT REMOVE FROM OFFICE

NORTH

REGISTERED
OREGON
LAND SURVEYOR

Robert W. Wade

OCTOBER 4, 1957
ROBERT W. WADE
433



EAST 1/4 CORNER
SECTION 3
TOWNSHIP 22 SOUTH
RANGE 12 WEST, W.M.

EAST LINE
SECTION 3

NOTE: THIS SURVEY BASED ON
CORNERS AS ESTABLISHED
BY JAMES W. BYRON IN A
SURVEY DATED AUGUST 9, 1956

PROPERTY SURVEY
A TRACT IN THE N.W. 1/4 OF
SECTION 3,
TOWNSHIP 22 SOUTH,
RANGE 12 WEST, W.M.,
DOUGLAS COUNTY, OREGON
SCALE: 1" = 200' 7-22-67
FOR STEVE WAGGONER
Box 330, RTE. 4 WEST
REEDSPORT, OREGON

A ■ HARLAN ■ GESSFORD
ARCHITECTS
5TH & HIGHLAND

E ■ ERICHSEN
ENGINEER
COOS BAY OREGON