

BLOCK 14  
MILLER'S

COUNTY SURVEYORS FILE DATA  
DO NOT REMOVE FROM OFFICE

LOTS 13, 14  
ADDITION

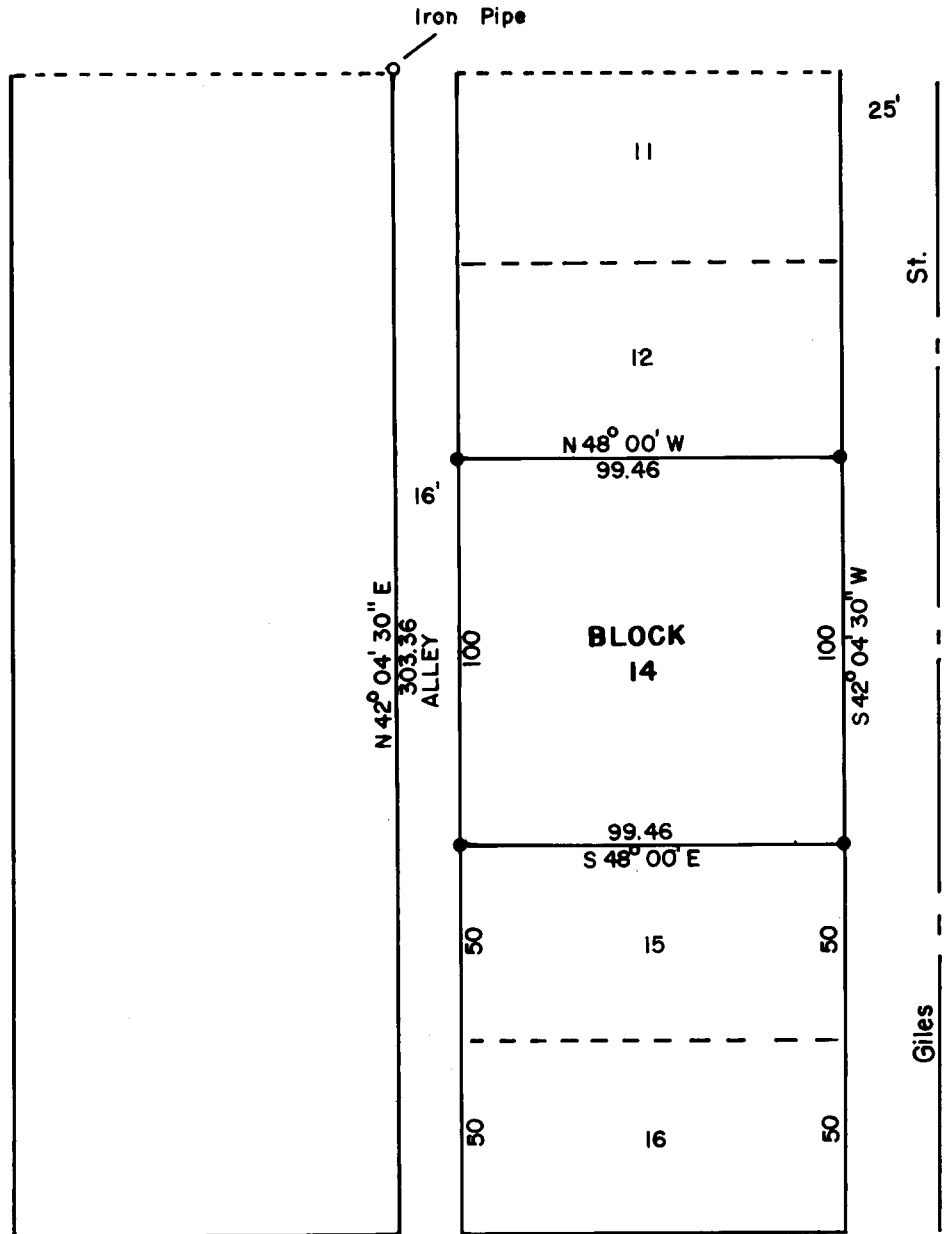
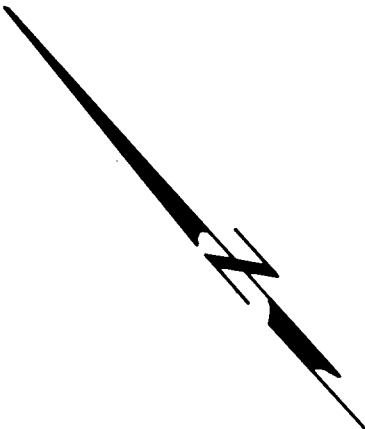
SURVEYED FOR RODNEY THOMPSON  
SURVEYED BY DON E. GARRETT  
APRIL 29, 1967  
SCALE 1" = 50'

o - Set 5/8" Iron Rod

Proportionate measurement was not used as it would throw the North Line of Lot 11 into improvements on Lot 10.

REGISTERED  
OREGON  
LAND SURVEYOR

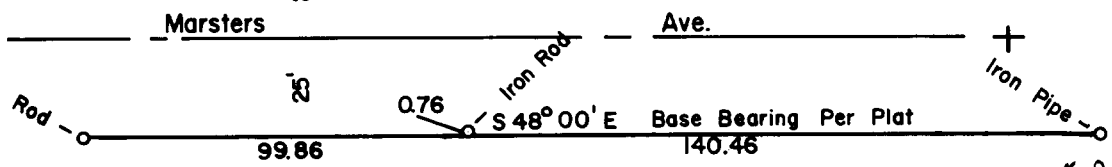
*Don E. Garrett*  
JULY 14, 1961  
DON E. GARRETT  
544



FILED *LL*  
RECEIVED

MAY 4 1967

COUNTY SURVEYOR  
DOUGLAS COUNTY, ORE.



C. S. File No. 55/33-3