

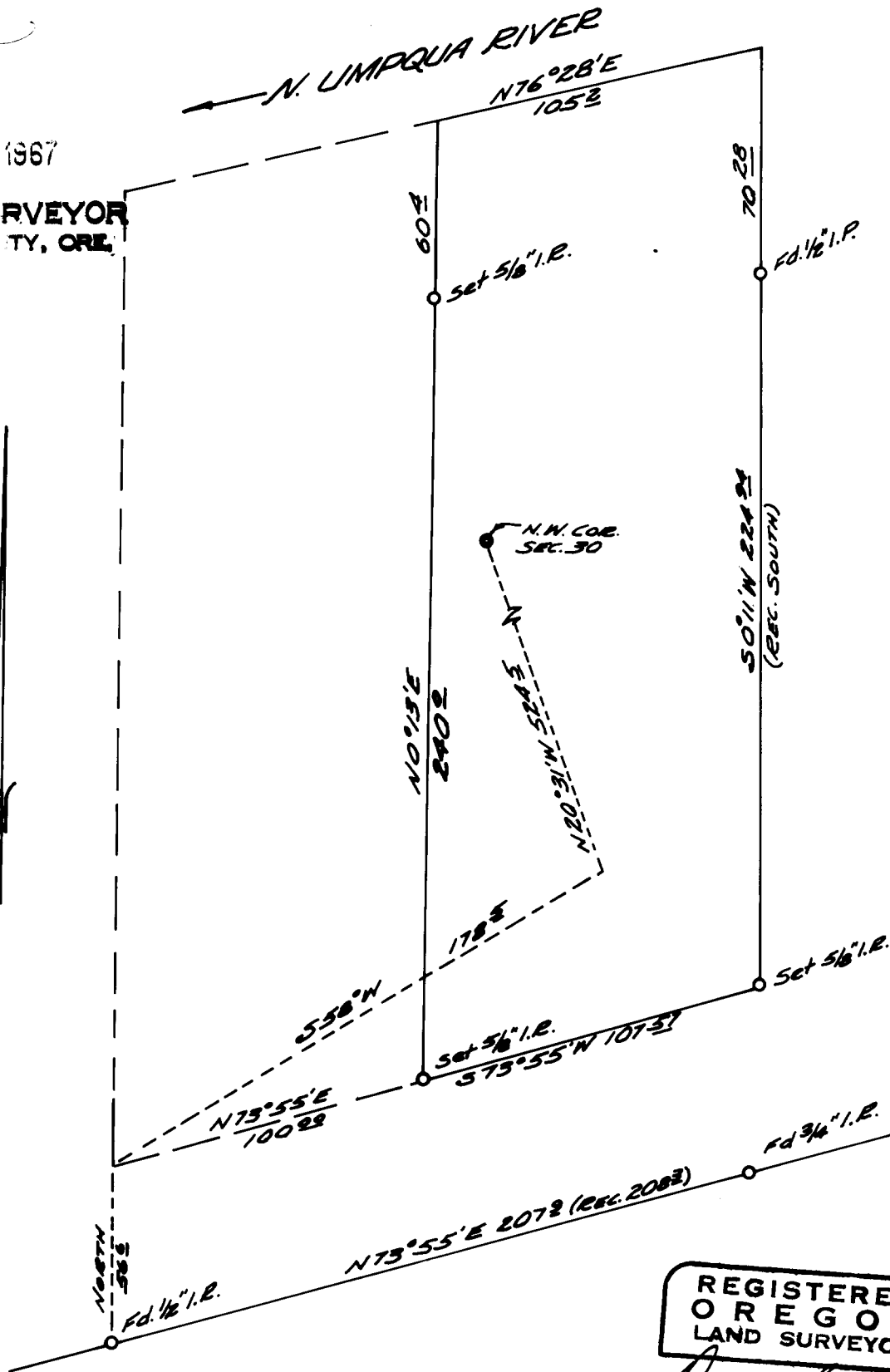
SURVEY TO SET PROPERTY CORNERS
 PART OF THE N.W. 1/4 OF S.30, T.26S, R.5N.W.M
 SURVEYED FOR ELMER SWALES
 by DON E GARRETT
 APR. 1967
 SCALE - 1" = 50'

COUNTY SURVEYORS FILE DATA
 DO NOT REMOVE FROM OFFICE

FILED
 RECEIVED

APR 25 1967

COUNTY SURVEYOR
 DOUGLAS COUNTY, ORE.



REGISTERED
 OREGON
 LAND SURVEYOR

Don E. Garrett

JULY 14, 1961
 DON E. GARRETT
 544