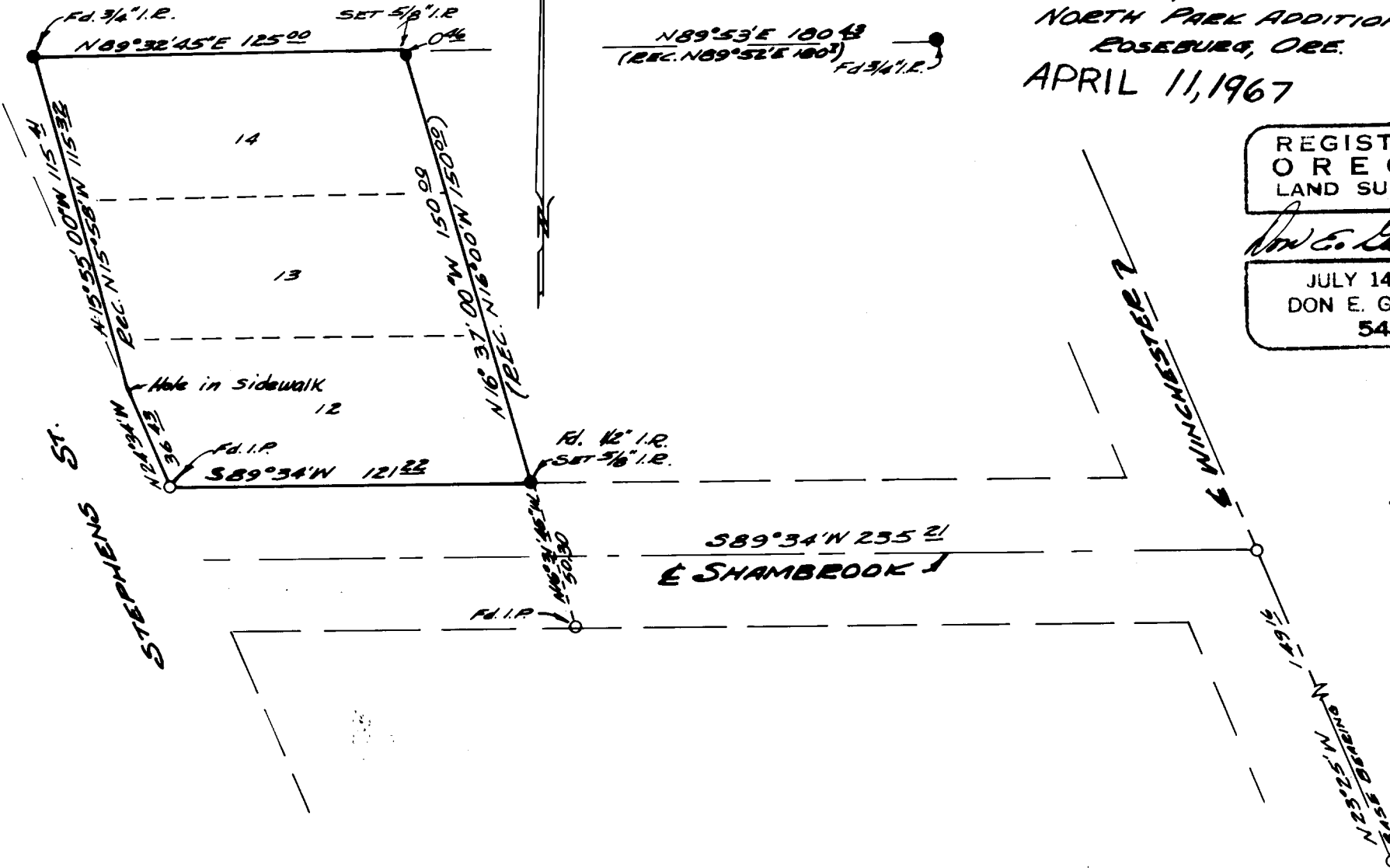


COUNTY SURVEYORS FILE DATA
DO NOT REMOVE FROM OFFICE

SURVEY TO SET PROPERTY CORNERS
SURVEYED FOR R.E. HUORT
by DON E. GARRETT
LOTS 12, 13 & 14; BLK. 2
NORTH PARK ADDITION
ROSEBURG, ORE.
APRIL 11, 1967



REGISTERED
OREGON
LAND SURVEYOR

Don E. Garrett

JULY 14, 1961
DON E. GARRETT
544

FILED *LL*
RECEIVED

APR 16 1967

COUNTY SURVEYOR
DOUGLAS COUNTY, ORE.