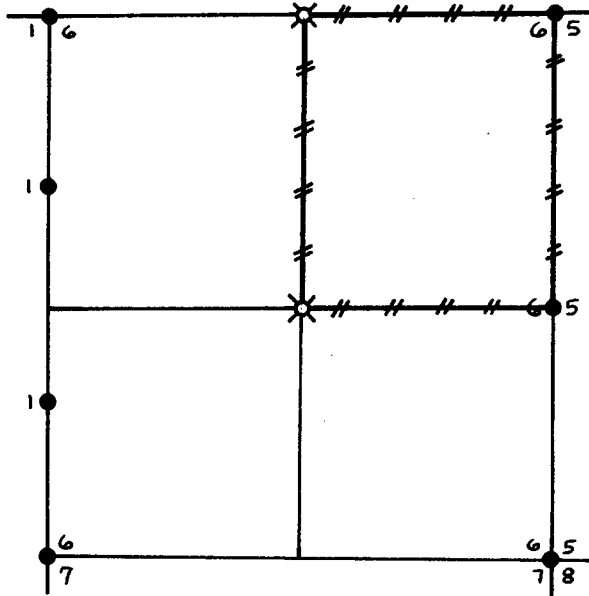


HERBERT R. JONES  
ENGINEERING CO.

SECTION 6 TOWNSHIP 25S RANGE 8W



- // // LINE BLAZED  
 ● CORNERS FOUND  
 X CORNERS RE-ESTABLISHED OR SET

Transit and slope chain survey

This survey was made for Weyerhaeuser Company by  
Donald L. Peel, Oregon Land Surveyor, Reg. No. 752

Helpers: Douglas Graham  
Jack Coleman

REGISTERED  
OREGON  
LAND SURVEYOR

*Donald L. Peel*

JULY 8, 1966  
DONALD L. PEEL  
752

DATE OF SURVEY April 6 through April 27, 1967

FILED FOR RECORD AT Douglas Co. Surveyors Office DATE May 1967

DISTRIBUTION

H. R. Jones Engr. Co.

Weyerhaeuser Co. (North Bend, Ore.)

Douglas Co. Surveyor's Office

B.L.M. (Coos Bay District)

REPORTED May 1967

BY Donald L. Peel

SUBDIVISION OF SECTION 6, TOWNSHIP 25 SOUTH, RANGE 8 WEST,  
WILLAMETTE MERIDIAN

After a diligent and thorough search was made by this surveyor & and his helpers, the following corners were not found and considered lost.

$\frac{1}{4}$  corner common to Sections 6&7, T25S, R8W  
Township corner for Township 24 South, Ranges 8&9 West  
S  $\frac{1}{4}$  corner of Section 31, T24S, R8W  
Standard corner common to Sections 31&32, T24S, R8W

Along the Township line I did find a cedar snag B.T. scribed  $\frac{1}{4}$ S6BT. In searching the original field notes, I could find no mention of such a B.T., so for this survey I ignored said B.T. Also found but ignored was the S  $\frac{1}{4}$  corner of Sec 31, T24S, R8W set in 1878 and destroyed in a later retracement survey.

The following corners were found and used for control:

Section corner common to Sections 5, 6, 7 & 8, T25S, R8W  
Closing corner common to Sections 6&7, T25S, R8W  
East  $\frac{1}{4}$  corner of Section 1, T25S, R9W  
The corner described in the 1911 Retracement Survey as  
"an apparent Hiatus Corner" (hereinafter referred to  
as Hiatus Corner)  
Closing corner common to Sections 1&6, T25S, R8&9W  
Closing corner common to Sections 5&6, T25S, R8W  
 $\frac{1}{4}$  corner common to Sections 5&6, T25S, R8W

Closed traverses were run for the subdivision and true line determination.

Bearings were based on solar observation.

The compass rule was used in balancing the closed traverses.

A closure of not less than 1 in 4500 was obtained, both for the chaining and angles.

The position for the lost  $\frac{1}{4}$  corner on the South line of Section 6, and the West  $\frac{1}{4}$  corner (which was never set in original survey) was calculated by single proportional measurement, but never set in the field, used only for subdivision calculations.

SETTING PROPERTY CORNERS AND DETERMINATION OF TRUE LINE

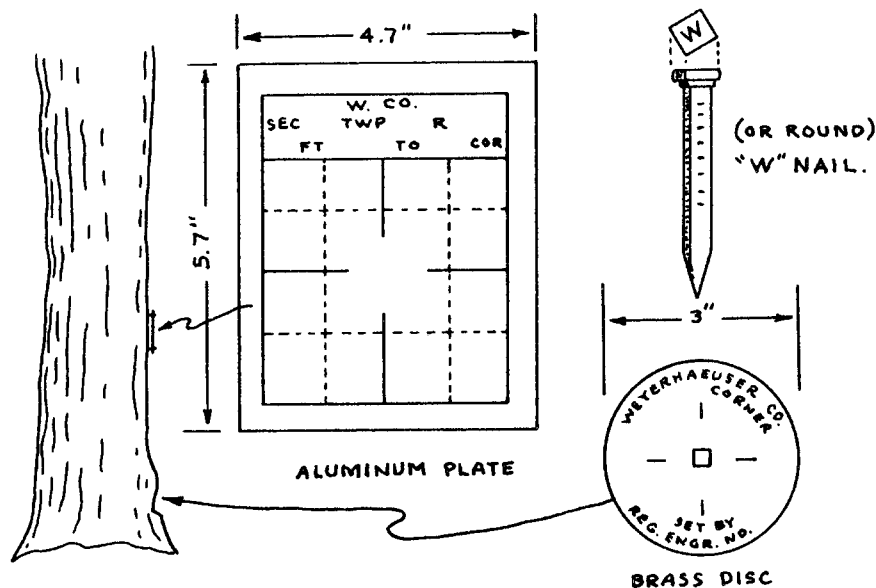
The center of Section 6 was set at the intersection of the NS & EW centerlines. The North  $\frac{1}{4}$  corner of Section 6 was set by single proportional measurement. Both corners were set by transit & chain from the nearest control hub. The corner references were set by compass & chain, using a declination of twenty degrees.

Offsets in the cardinal directions were calculated from each control hub to the true line. A staff compass was run between the offsets. Trees on both sides of the true line were marked with two blazes angled toward the true line. A notch was cut in each blaze.

REFERENCE METHOD

All corners were referenced by the Weyerhaeuser Method:

A "W" nail driven through the hole in a brass disc, into a notch cut low on a tree, stamped with the Oregon Registered Land Surveyor or Professional Engineer registration number. An embossed aluminum plate nailed head high on same tree with 8d aluminum nails, with distance and bearing from the "W" nail to the corner stamped on it.



CORNER DATA

1 | 6  
| 7

Closing corner common to Sections 6&7, T25S, R8W

GLO Survey Record

Post	Gone
30" hem N20 3/4 E 67 lks	Found 36" hem. Scribe visible.
20" cedar S83E 55 lks	Found 24" cedar, face not quite closed
	Scribe visible

I set 4' x 3/4" pipe 3' in ground & square post. Both B.T.s in good shape, so I just put Weyerhaeuser Co. plates with call distances & bearings on the original B.T.s.

1 |

East 1/4 corner common to Section 1, T25S, R9W

GLO Survey Record

Sandstone	Gone
48" fir N87 1/2 E 32 lks	Found fir windfall--chopped open
	Scribe visible, supposedly markings
	Destroyed in 1911 Retracement but
	not so
50" fir S85W 29 lks	Found 50" fir--closed face

I set 4' x 3/4" pipe 2 1/2' in ground, & square post. Re-referenced with "W" nails & plates only.

50" fir S84W	17.0'
60" fir N47W	5.3'

Hiatus Corner common to Sections 1& 6, T25S, R8&9W

GLO Survey Record

Post			Gone
36" fir	S30E	93 lks	Found 37" fir--closed face--not S30E but S61E
40" fir	S61W	20 lks	Found 42" fir--closed face--not S61W, but S30W

Note: From the call distances & the direction of the faces on the B.T.s, I would say the bearings in the original field notes were reversed.

I set 4"x3/4" pipe 3 1/2' in the ground & square post. Re-referenced with "W" nails & plates only.

42" fir	S35W	11.7'
18" cedar	N47W	12.5'

116

Closing corner common to Sections 1&6, T25S, R8&9W

GLO Survey Record

Post			gone
60" cedar	S86W	11 lks	Found cedar snag--scribe visible
12" cedar	S60E	78 lks	Found 16" cedar already chopped open Scribe visible

I set a 4"x3/4" pipe 3 1/2' in ground & square post. Re-referenced with "W" nails and plates only.

30" hem	S49E	65.6'
50" fir	S28W	44.9'

615

Closing corner common to Sections 6&5, T25S, R8W

GLO Survey Record

Post			Gone
30" cedar	S46 1/2 E	40 lks	Found 36" cedar--had been chopped open clear past scribing
26" maple	S19 1/2 W	22 lks	Found 28" maple--chopped open Scribe visible

I set 4"x3/4" pipe 3 1/2' in ground and square post. Re-referenced with "W" nails and plates only.

36" cedar	S52E	24.0'
28" maple	S17W	13.5'

6 5  
1/4 corner common to Sections 6&5, T25S, R8W

GLO Survey Record

post  
6" fir N50 1/4 E 10 lks Gone  
6" fir N3W 28 lks Found 13" fir--closed face  
Gone

I set 4'x3/4" pipe 3 1/2' in ground & square post. Re-referenced with "W" nails & plates only.

13" fir N50 E 6.2'  
14" fir N21W 29.8'

6 5  
7 8  
Section corner common to Sections 5,6,7 & 8, T25S, R8W

GLO Survey Record

Post  
72" fir N16E 103 lks Gone  
Found 64" fir--closed face--N26E not N16E--by setting the corner from the other 3 B.T.s, I make the distance to this B.T. as 85.0 ft., which leads me to believe the dist. was 130 lks and not 103 lks.  
6" fir S203/4E 20 lks Found 24" hem not fir. Chopped open Scribe visible  
84" fir S41W 68 lks Found 70" fir stub--chopped open scribe visible  
7" fir N6 1/4 W 39 lks Found 24" fir--closed face

I set a 4'x3/4" pipe 3 1/2' in ground & square post. Re-referenced with "W" nails and plates only.

18" fir N82 E 52.0'  
24" hem S23 E 11.8'  
18" hem S64W 29.7'  
24" fir N6W 23.1'

6  
North 1/4 corner common to Section 6, T25S, R8W

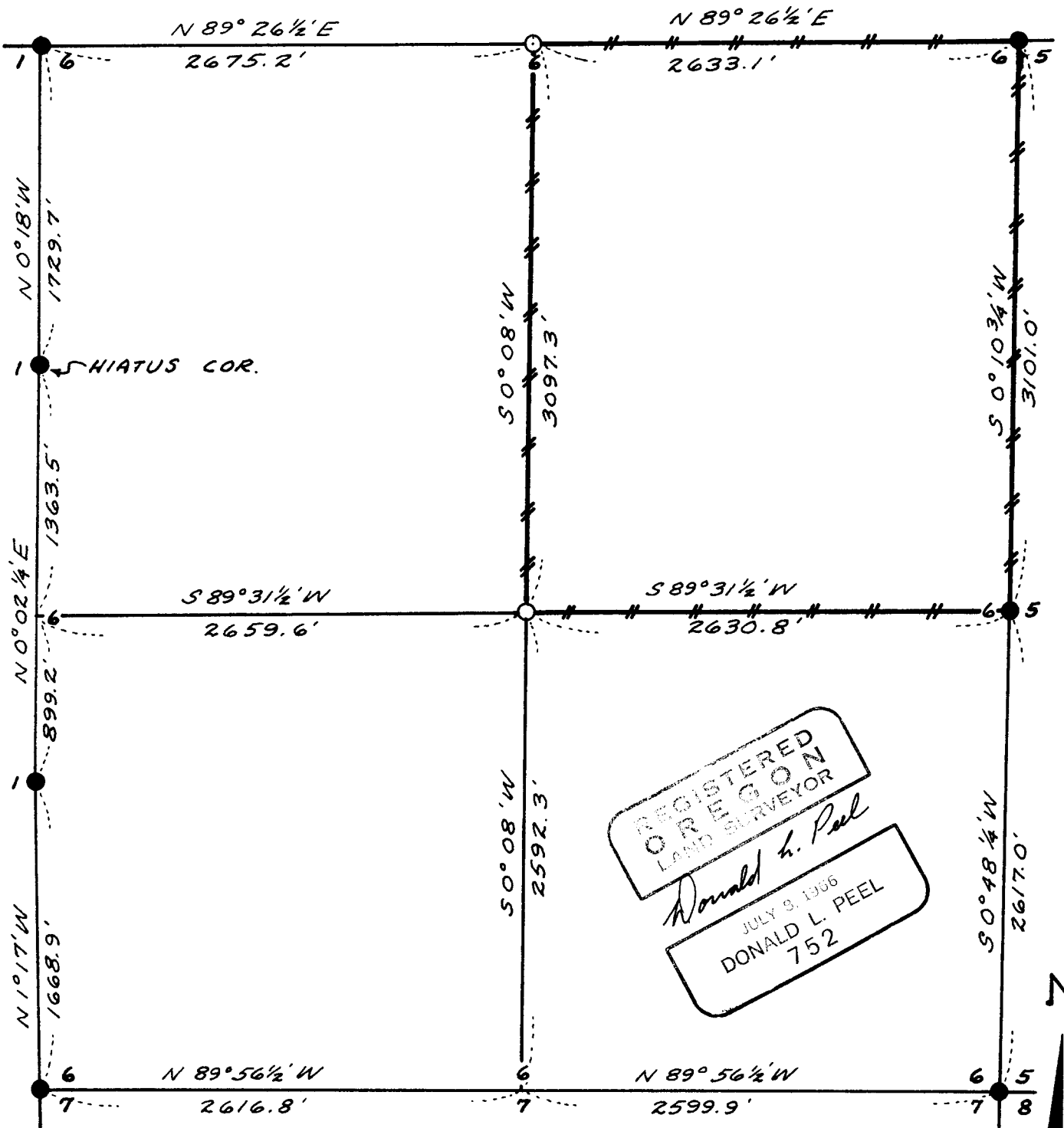
I set 4'x3/4" pipe 3 1/2' in ground & square post. Referenced the Weyerhaeuser method ("W" nail, disc & plate)

16" fir S6W 15.1'  
36" cedar N66W 12.2'

ctr 1/4  
1/4 corner Section 6, T25S, R8W

I set 4'x3/4" pipe 3 1/2' in ground & square post. Referenced the Weyerhaeuser method ("W" nail, disc, plate)

20" hem N61 E 20.6'  
62" fir S44W 33.2'



**LEGEND**

- GOVERNMENT CORNERS FOUND
- PROPERTY CORNERS SET
- #— LINES BLAZED

COUNTY SURVEYORS FILE DATA  
 DO NOT REMOVE FROM OFFICE

**SURVEY OF**  
**SECTION 6, T25S, R8W, W.M.**  
 for  
**WEYERHAEUSER COMPANY**  
 SCALE: 1" = 800'  
 BEARINGS BASED ON SOLAR OBSERVATION  
 APRIL 1967

FILED  
RECEIVED

MAY 12 1967

COUNTY SURVEYOR  
DOUGLAS COUNTY, ORE.

C. S. File No. 55/30-41



UNITED STATES  
DEPARTMENT OF THE INTERIOR

IN REPLY REFER TO:  
9180 (100.4c)

BUREAU OF LAND MANAGEMENT  
Oregon State Office  
729 N. E. Oregon (P. O. Box 2905)  
Portland, Oregon 97208

May 22, 1967

Mr. James W. Byron  
Douglas County Surveyor  
Roseburg, Oregon 97470

Dear Mr. Byron:

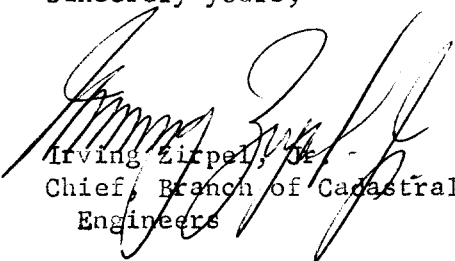
Reference is made to your letter of May 15, 1967, concerning the North boundary of T. 25 S., R. 9 W. This boundary in itself was not surveyed as such; however, the South boundary of T. 24 S., R. 9 W. was surveyed by Wm. H. Byars in 1879, as shown on the official plat of survey approved July 26, 1879, and partially re-surveyed by Levi C. Walker in 1905.

In 1902 Charles L. Campbell subdivided T. 25 S., R. 9 W., at which time he closed against the South boundary of T. 24 S., R. 9 W., setting closing corners at all points of intersection. These closing corners may not actually be on the previously defined South boundary of T. 24 S., R. 9 W.; however, all rules and regulations provide for the lengthening or shortening of these closing lines to the true point of intersection.

I am at a loss as to why the North boundary of T. 25 S., R. 9 W. should not be considered surveyed as all our records indicate that it is.

If your file is missing any of these notes, let us know and we will supply the missing ones.

Sincerely yours,

  
Irving Zirpel, Jr.  
Chief, Branch of Cadastral  
Engineers

FILED  
RECEIVED

MAY 22 1967

COUNTY SURVEYOR  
DOUGLAS COUNTY, ORE.

CS File No. 55/30-4i