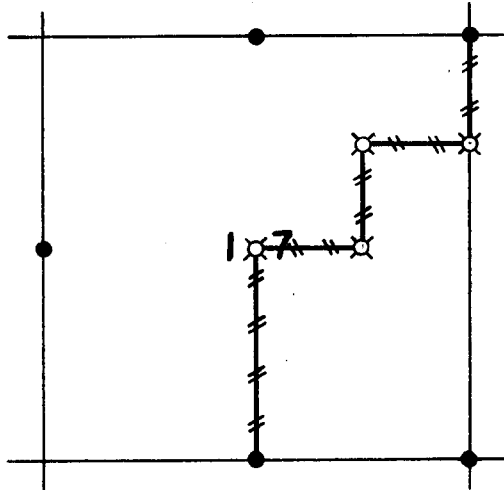


HERBERT R. JONES
ENGINEERING CO.

SECTION 17 TOWNSHIP 24S RANGE 8W



- LINE BLAZED
● CORNERS FOUND
X CORNERS RE-ESTABLISHED OR SET

Transit and slope chain survey.

This survey was made for Weyerhaeuser Company by Donald L. Peel,
Oregon Land Surveyor, Reg. No. 752

Helpers: Douglas Graham

Jack Coleman

George Waske

REGISTERED
OREGON
LAND SURVEYOR

Donald L. Peel

JULY 8, 1966
DONALD L. PEEL
752

DATE OF SURVEY February 20 through March 8, 1967

FILED FOR RECORD AT Douglas Co. Surveyor's Office DATE April 1967

DISTRIBUTION

H.R. Jones Engr. Co.

Weyerhaeuser Co. (North Bend, Ore.)

Douglas Co. Surveyor's Office

REPORTED April 1967

BY Donald L. Peel

CS 55/30-2A

C. S. File No. 55/30-2

SUBDIVISION OF SECTION 17, TOWNSHIP 24 SOUTH, RANGE 8 WEST,
WILLAMETTE MERIDIAN

After a diligent and thorough search was made by this surveyor and his helpers, the $\frac{1}{4}$ corner common to Sections 17 and 16 was not found and considered lost.

The following corners were found and used for control:

Section corner common to Sections 8, 9, 16 and 17
Section corner common to Sections 16, 17, 20 and 21
 $\frac{1}{4}$ corner common to Sections 17 and 20
 $\frac{1}{4}$ corner common to Sections 17 and 18
 $\frac{1}{4}$ corner common to Sections 8 and 17

Closed traverses were run for the subdivision and true line determination.

Bearings were based on solar observation.

The compass rule was used in balancing the closed traverses.

A closure of not less than 1 in 5000 was obtained, both for the chaining and angles.

The position for the lost $\frac{1}{4}$ corner was calculated by single proportional measurement, but never set in the field, used only for subdivision calculations.

SETTING PROPERTY CORNERS AND DETERMINATION OF TRUE LINE

The center of Section 17, and the center of the NE $\frac{1}{4}$ of Section 17, were set at the intersection of NS and EW lines. All other 1/16 corners were set by single proportional measurement. All property corners were set by staff compass and chain from the nearest control hub. The corner references were set by staff compass and chain, using a declination of twenty degrees.

Offsets in the cardinal directions were calculated from each control hub to the true line. A staff compass was run between the offsets. Trees on both sides of the true line were blazed.

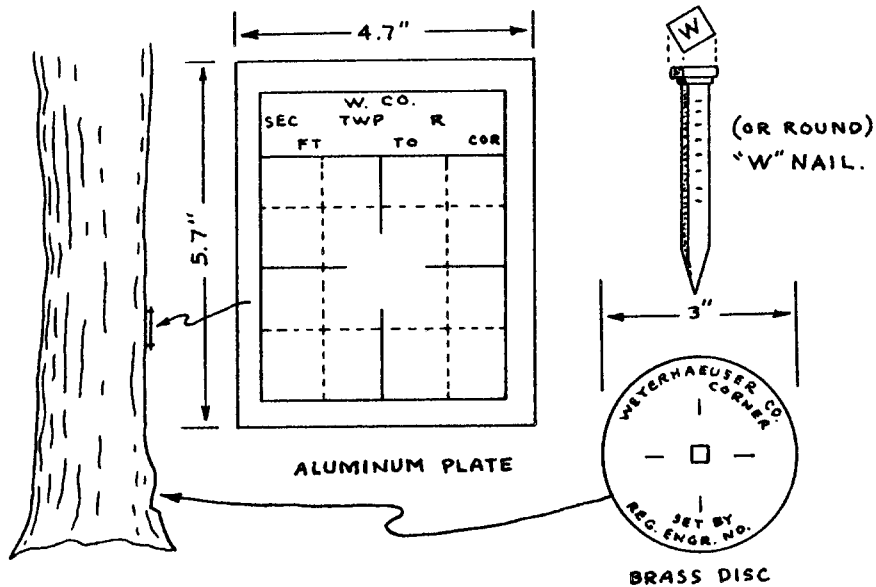
CS 55/30-2b

C. S. File No. 55/30-2

REFERENCE METHOD

All corners were referenced by the Weyerhaeuser Method:

A "W" nail driven through the hole in a brass disc, into a notch cut low on a tree, stamped with the Oregon Registered Land Surveyor or Professional Engineer registration number. An embossed aluminum plate nailed head high on same tree with 8d aluminum nails, with distance and bearing from the "W" nail to the corner stamped on it.



CORNER DATA

8 | 9
17 | 16

Section corner common to Sections 8, 9, 16 and 17, T24S, R8W
GLO Survey Record

Post			Gone
24" fir	N52E	31 lks	Gone
22" fir	S18½E	34 lks	Found 26" fir snag--face visible healed over
24" fir	S57W	10 lks	Found 32" fir--face visible healed over
15" fir	N31W	9 lks	Gone

Found BLM pipe and brass cap for Section corner and four new
BTs as follows:

18" fir,	N25E	35.6 ft
34" fir	S7E	122.1 ft
28" fir	S69W	122.2 ft
22" fir	N29W	24.0 ft

CS 55/30-2c

C. S. File No. 55/30-2c

17|16
20|21

Section corner common to Sections 16, 17, 20 and 21, T24S, R8W

GLO Survey Record

Post			Gone
12" fir	N27 $\frac{1}{2}$ E	57 lks	Found 24" fir--rescribed by BLM
10" fir	S4E	27 lks	Found 24" fir--rescribed by BLM
14" fir	S68W	54 lks	Gone
36" fir	N29W	48 lks	Gone

Found BLM pipe and brass cap for Section corner and two new BTs and two originals rescribed.

10" fir	S42W	23.8 ft
14" fir	N86W	53.5 ft

17
20

$\frac{1}{4}$ corner common to Sections 17 and 20, T24S, R8W

GLO Survey Record

Post			Gone
60" fir	North	29 lks	Found 72" fir--cruisers marks
30" fir	S87W	61 lks	Found 48" fir--face visible, healed over

Set hub for $\frac{1}{4}$ corner--original BTs marked with Weyerhaeuser tags.

SET - $\frac{3}{4}$ " X 4' PIPE, $3\frac{1}{2}$ ' INTO GROUND - APRIL 6, 1967 (See letter in file)

18|17

$\frac{1}{4}$ corner common to Sections 17 and 18, T24S, R8W

GLO Survey Record

Post			Gone
14" hem	West	34 lks	Found 24" hem--face visible, scribe part rotted out--cruisers marks
6" hem	S34E	19 lks	Found 26" white fir (not hem)-- couldn't see any face--base of tree buried by road construction

Set a hub for $\frac{1}{4}$ corner--original BTs marked with Weyerhaeuser tags

SET - $\frac{3}{4}$ " X 4' PIPE, $3\frac{1}{2}$ ' INTO GROUND, APRIL 6, 1967 (See letter in file)

8
17

$\frac{1}{4}$ corner common to Sections 8 and 17, T24S, R8W

GLO Survey Record

Sand stone			Gone
30" cedar	N80E	107 lks	Found but had been knocked down during logging
16" hem	S86E	90 lks	Gone

Set a hub for $\frac{1}{4}$ corner. Before logging the corner had been re-referenced by R. Yantis of Weyerhaeuser Co., with a "W" nail and Weyerhaeuser tags.

24" white fir stump	N7W	91.0 ft
40" fir stump	S80W	57.6 ft

SET - $\frac{3}{4}$ " X 4' PIPE, $3\frac{1}{2}$ ' INTO GROUND, APRIL 6, 1967 (See letter in file)

CS 55/30-2d

C. S. File No. 55/30-2⁰

N 1/16 Corner on East line of Section 17, T24S, R8W

Set a 4'x3/4" pipe and square post

Referenced by Donald L. Peel (Weyerhaeuser Method)

13" fir N61W 1.9 ft
33" fir S89E 10.1 ft

NE 1/16 Corner for Section 17, T24S, R8W

Set a 4'x3/4" pipe and square post

Referenced by Donald L. Peel (Weyerhaeuser Method)

20" hem N64E 22.0 ft
28" white fir N61W 31.5 ft

CE 1/16 Corner for Section 17, T24S, R8W

Set a 4'x3/4" pipe and square post

Referenced by Donald L. Peel (Weyerhaeuser Method)

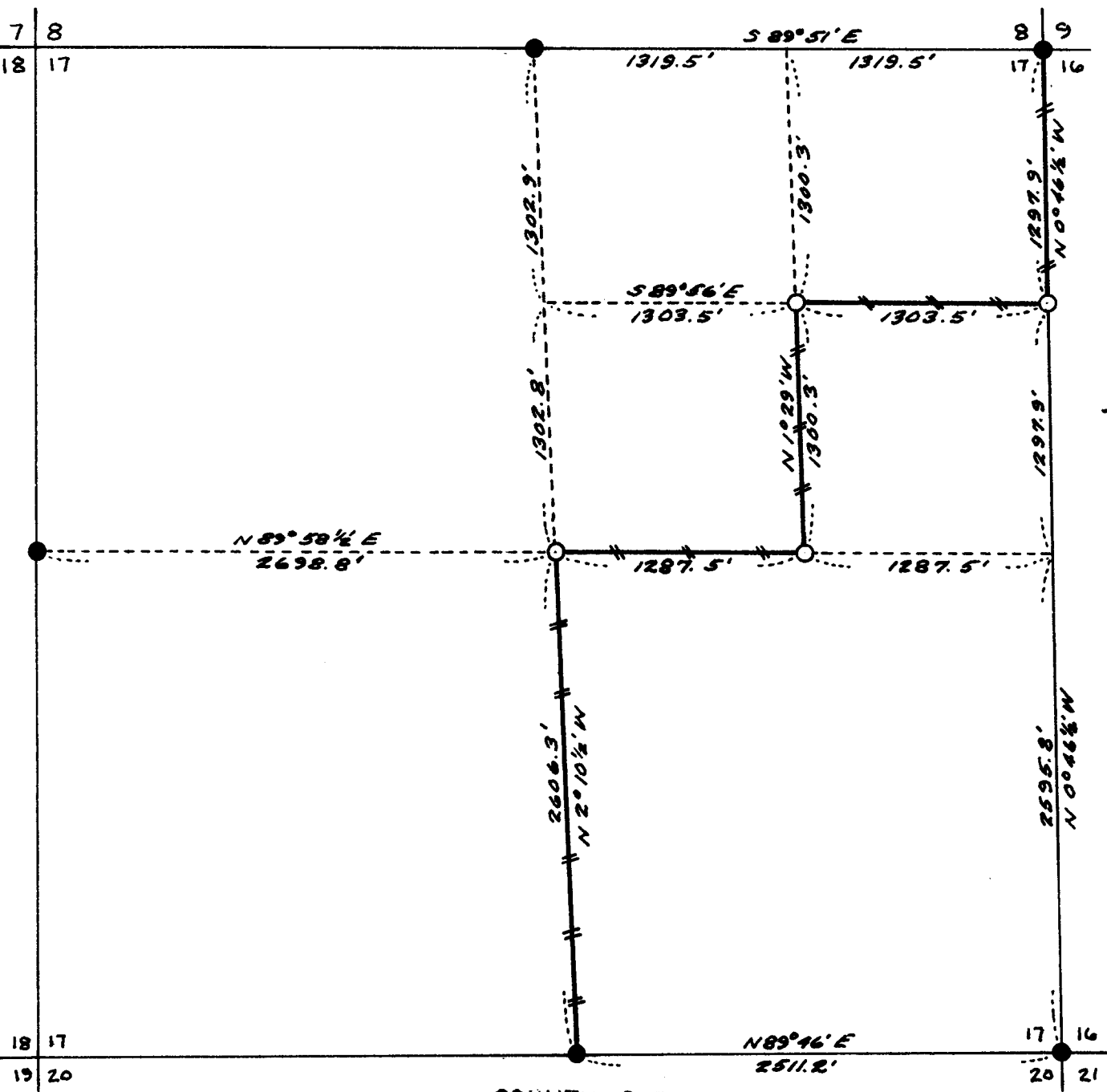
56" fir N30W 38.4 ft
6" white fir, S5E 23.4 ft

C 1/4 Corner for center of Section 17, T24S, R8W

Set a 4'x3/4" pipe and square post

Referenced by Donald L. Peel (Weyerhaeuser Method)

37" hem S84W 16.4 ft
17" white fir N32E 34.3 ft



COUNTY SURVEYORS FILE DATA
DO NOT REMOVE FROM OFFICE

REGISTERED
OREGON
LAND SURVEYOR

Donald L. Peel

JULY 8, 1965
DONALD L. PEEL
752

LEGEND

- GOVERNMENT CORNERS FOUND
- PROPERTY CORNERS SET
- ▬ LINES BLAZED

SURVEY OF
SECTION 17, T24S, R8W, W.M.
WYERHAUSER COMPANY
SCALE: 1" = 800'
BEARINGS BASED ON SOLAR OBSERVATION
MARCH 1967

FILED
RECEIVED

MAR 29 1967

COUNTY SURVEYOR
DOUGLAS COUNTY, ORE.

HOME PHONES:

HERBERT R. JONES 344-5500

N. JULIANO 343-5288

OFFICE PHONE: 345-6595

HERBERT R. JONES
ENGINEERING Co.

CASCADE BUILDING
163 East 12th Avenue

EUGENE, OREGON 97401

April 15, 1967

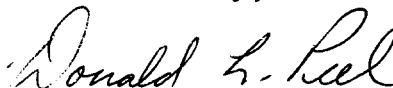
James W. Byron
Douglas County Surveyor
Roseburg, Oregon

Dear Mr. Byron:

Regarding your request of April 4, 1967, I completed setting 4' x 3/4" pipes driven approximately 3 1/2' into the ground at the N 1/4 cor., W 1/4 cor., S 1/4 cor. of Section 17, T24S, R8W and at the standard corner of Sections 34 and 35, T23S, R10W. The above mentioned pipes were set April 6, 1967.

Enclosed is another report on a survey in Township 23 South, Range 9 West.

Yours truly,



Donald L. Peel