

**SURVEYED FOR DEED DESCRIPTION
 SEC. 21, T. 28 S., R. 6 W. W. 1. SCALE 1"=30'
 SURVEYED FOR DOUGLAS NATIONAL BANK WAINSTON
 SURVEY BY BAUGHMAN SURVEY SERVICE
 AUGUST, 1966**

AS SHOWN
 SET BY IRON PEG

FILED *[Signature]*
 RECEIVED
 MAY 31 1967

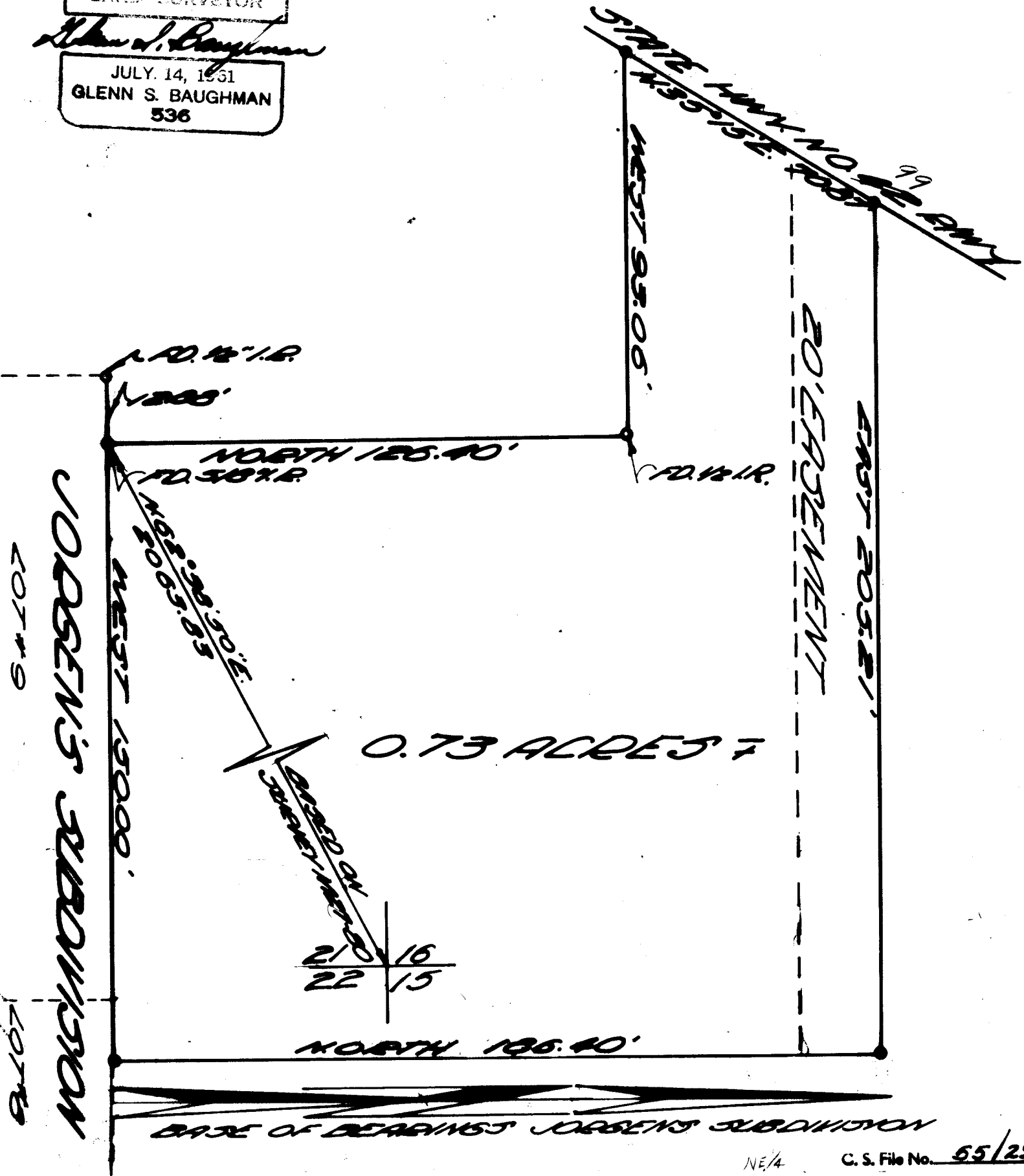
COUNTY SURVEYORS FILE DATA
 DO NOT REMOVE FROM OFFICE

COUNTY SURVEYOR
 DOUGLAS COUNTY, ORE.

REGISTERED
 OREGON
 LAND SURVEYOR

Glenn S. Baughman

JULY 14, 1961
 GLENN S. BAUGHMAN
 536



NE/4

C. S. File No. 65/29