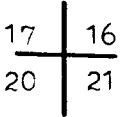


SURVEY IN SECTION 16, T. 27 S., R. 6 W., W. M.  
 SURVEYED FOR JOHN BELL  
 SURVEYED BY R. H. GEE DECEMBER, 1968  
 SCALE 1" = 50'

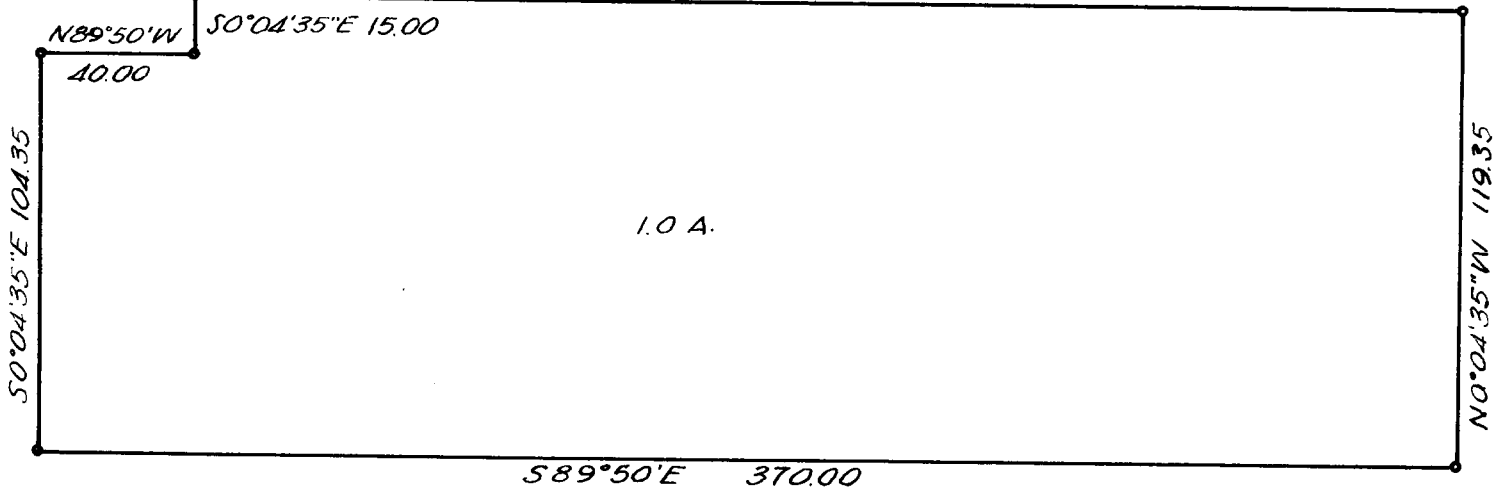
**COUNTY SURVEYORS FILE DATA  
 DO NOT REMOVE FROM OFFICE**



T. 27 S., R. 6 W., W. M.

Initial point bears North 2768.15 feet  
 and East 2601.64 feet from section corner  
 to Sections 16, 17, 20 and 21.

STEEL NAIL - INT. PT. N89°50'W 330.00



• Denotes iron rod set.



*[Handwritten signature]*