

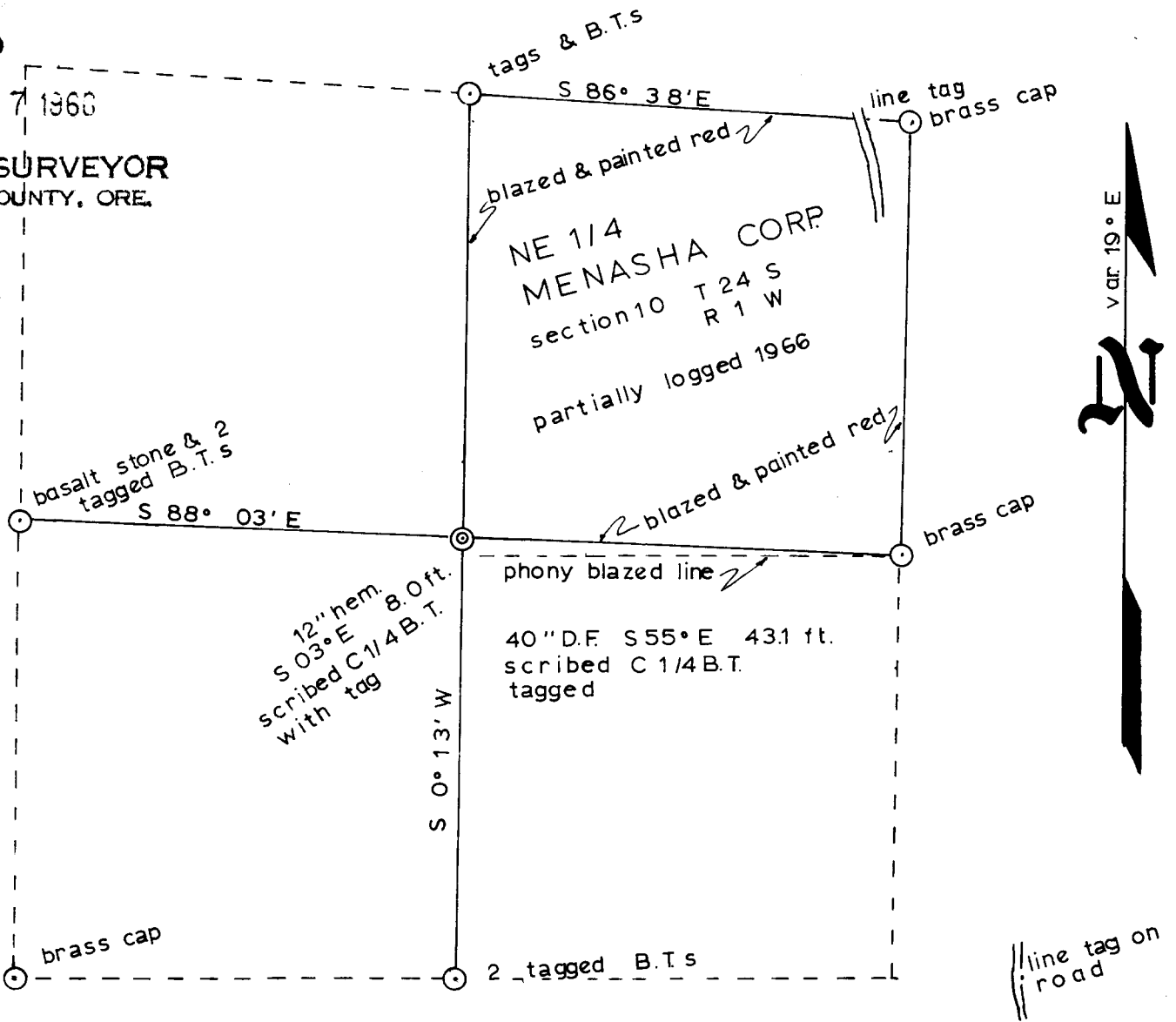
COUNTY SURVEYORS FILE DATA
DO NOT REMOVE FROM OFFICE

SURVEY FOR MENASHA CORPORATION
Section 10 T 24 S R 1 W
DOUGLAS COUNTY

FILED
RECEIVED

DEC 7 1966

COUNTY SURVEYOR
DOUGLAS COUNTY, ORE.



corners found ○
corner set ⊙
scale: 1" = 1000'

October 1966

center set by intersecting
staff compass lines - no chain

T. S. Ellingsen L.S. 329
F.L. Lyon

REGISTERED
OREGON
LAND SURVEYOR

Ronald L. Durham

JULY 12, 1953
RONALD L. DURHAM
605

rld

File No. 55/20