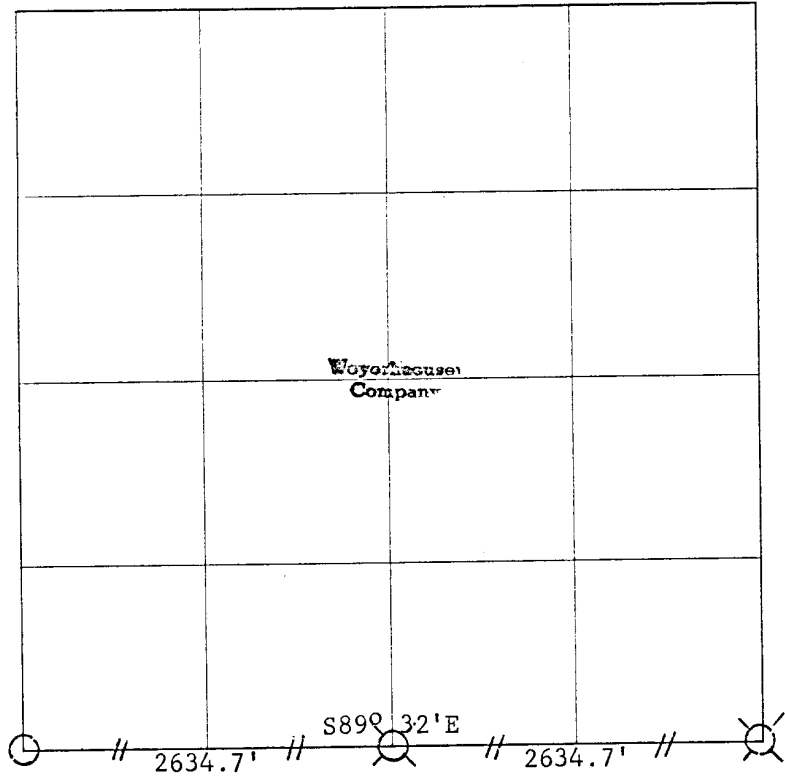


Weyerhaeuser Company

Section 14 Township 26S Range 3W



— // — // — Line marked by notch cut in blaze and orange ribbon

- Known corner
- ⊗ Referenced corner

Transit and abney slope chain survey. Bearings based on assumed 20° declination.

This survey was made for Weyerhaeuser Company under the supervision of
 John Wilson, Washington Licensed Engineer, Reg. No. 2526

Helpers: D.Hansen, B.L.M.
 G.Bingham, B.L.M.
 Eldon Case, Weyerhaeuser Co.
 Glen McChesney, Weyerhaeuser Co.

Dates of survey 4/18-21/66 Date filed for record & where May, 1966

Distribution Douglas County Surveyor's Office

W.Co.-Survey File
B.L.M.-Roseburg
Douglas Co. Surveyor

Reported May 23, 19 66

By _____

Establishment of South $\frac{1}{4}$ corner of Section 14,
Township 26 South, Range 3 West.

The following corners were found and used for control:

- Section corner common to Sections 14, 15, 22 and 23.
- Section corner common to Sections 13, 14, 23 and 24.

A diligent search by the Douglas County Survey Crew and by a Weyerhaeuser Company crew found no evidence of the $\frac{1}{4}$ corner common to Sections 14 and 23. Previous searches and cruise reports indicate this corner to be lost.

A closed traverse was run for the establishment of the $\frac{1}{4}$ corner which was set by the single proportionate method. The corner point was set by staff compass from the nearest hub.

Offsets in the cardinal direction were calculated from each hub to the true line. This true line was then blazed with a single notch in blazes and marked with orange ribbon. The references were made by staff compass using a declination of 20° .

$\frac{15}{22} | \frac{14}{23}$

Section corner for Sections 14, 15, 22 and 23 - 26S - 3W.

Found brass cap monument as recorded by J.W. Byron, Douglas County Surveyor, in 1960. Also found the remains of the original bearing trees, the bearing trees marked by A. Boyer in 1944, and the bearing trees marked by J.W. Byron in 1960. All of these above bearing trees were found and recorded by a 1962 Dependent Resurvey made by the United State Department of the Interior.

Because of the abundance of well marked bearing trees, this corner was not referenced by Weyerhaeuser Company. *rfc*

$\frac{14}{23} | \frac{13}{24}$

Section corner for Sections 13, 14, 23 and 24 - 26S - 3W.

G.L.O. Survey Record 1882

Fir Post			No trace
30" Cedar	N 70° E	58 lks	Cedar shell 5' high, badly burned. N 73° E 41.0' to center of stump.
30" Cedar	S 82° E	19 lks	38" leaning red cedar- in rotting condition and scribing once visible has eroded. S 82° E 12.5' to center of tree.
12" Cedar	S 78° W	85 lks	No trace.
24" Cedar	N 19° W	170 lks	Shell of a 36" Incense Cedar - axe marks but no visible scribing. N 15° W 118.6'

Weyerhaeuser Company Survey Record August 1951

Curtis Price found scribing on the SE BT and evidence of the NE and NW BT's.

Set 2½" Cedar post S82°E - 19 lks. from the identified SE BT.

28" Cedar	S 36° E	37.5'	Plate renewed 6/65
32" Fir	N 65° E	40.4'	Plate renewed 6/65
14" Fir	N 84° W	31.6'	Plate renewed 6/65
24" Fir	S 22° W	57.5'	Plate renewed 6/65

Douglas County Renewal 6/65

Set Brass Cap at former position of 2½" Cedar post as set by Weyerhaeuser Company August, 1951 and scribed four new BT's: *Len. #117*

18" Fir	N 87° W	31.0'	Found
12" Hemlock	N 10° E	10.0'	Found
10" Fir	N 24° W	34.6'	Found
28" Cedar	S 40° E	39.1'	Found

14
23

¼ Corner for Section 14 and 23 - 26S - 3W *11/18 ✓*

G.L.O. Survey Record 1882

Cedar Post			Not found
18" Fir	S 20° E	18 lks.	Not found
30" Fir	N 60° W	27 lks.	Not found

Set 1" aluminum pipe by single proportionate method.

Referenced by Glen McChesney (plates and "W" nails only)
Declination 20°

Record

52" Fir	N 28° E	20.4'
24" Incense Cedar	S 35° W	21.6'