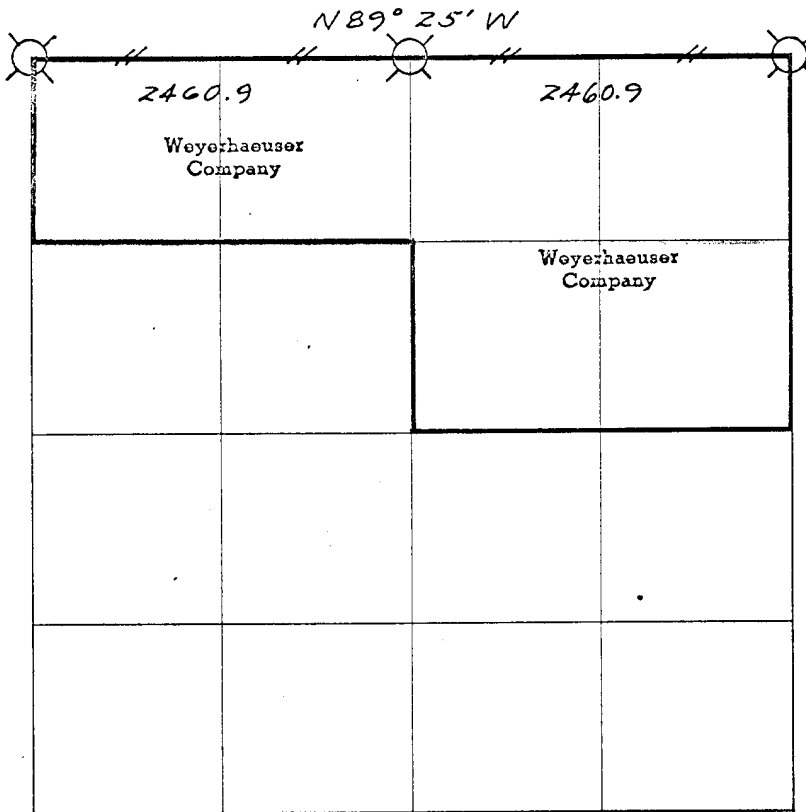


Weyerhaeuser Company

Section 24 Township 26 South Range 3 West



— // — // — Line marked by notch cut in blaze

○ Known corner

⊗ Referenced corner

Transit and abney slope chain survey. Bearings based on assumed 20° declination.

This survey was made for Weyerhaeuser Company by Harley E. Case, under the supervision of John Wilson, Washington Licensed Engineer Reg. #2526.

Helpers: Hal Brusche - B.L.M. Glen McChesney - Weyerhaeuser Co.

T. Watts - B.L.M.

M. Berg - B.L.M.

Dates of survey 5/25/65 - 6/4/65 Date filed for record & where August, 1965

Distribution Douglas County Surveyor's Office

B.L.M. Roseburg
Douglas County Surveyor
Springfield Survey File

Reported August 9 19 65

By Harley E. Case

13 18
24 19

Corner common to Sections 18 & 19, Township 26 South, Range 2 West
13 & 24, Township 26 South, Range 3 West

G.L.O. Survey Record 1885

Post			No trace
15" Laurel	S 05 W	190 lks	No trace
12" Laurel	S 17 E	140 lks	No trace
5" Red Fir	N 88 W	10 lks	No trace
12" Red Fir	N 85 E	20 lks	No trace

County Survey Record 1910

Re-established by Deputy Gibbs

Set granite stone 7" x 11" x 15" - Found - notches on North and South edges

24" Fir	N 53 E	108 lks	Found 28" Fir - scribing visible
24" Fir	S 80 E	31 lks	Fir snag badly burned
12" Laurel	S 05 W	190 lks	Not found
17" Fir	N 15 W	12 lks	Fir slab 65" high - scribing visible

6/4/65 Douglas County Survey crew renewed this corner this date by setting a brass cap at position of stone and setting stone alongside *Ren. #114*

Scribed two new B.T.'s as follows:

6" Fir	N 74 W	25.4'	Scribed T26S-R3W S13 BT
6" Fir	S 87 W	13.1'	Scribed T26S-R3W S24 BT

Referenced by Glenn McChesney (Plates and "W" nails only)
Declination 20°

28" Fir	N 54 E	77.6'
6" Hemlock	N 24 E	13.0'
6" Fir	S 86 W	13.1'
9" Fir	S 25 W	19.0'

13
24

¼ Corner common to Sections 13 and 24, Township 26 South, Range 3 West *#179 ✓*

G.L.O. Survey Record 1882

Post			No trace
22" Fir	N 74 E	6 lks	No trace
12" Chin- quapin	N 52 W	88 lks	No trace

Set 1" monel pipe for corner by single proportionate method

This supercedes the ¼ corner set here by Curtis Price for Weyerhaeuser Timber Company in a 1950-1951 survey of Section 24 using staff compass and chain *#88*

Referenced by Glenn McChesney (Plates and "W" nails only)

30" Fir	N 34 W	25.4'
44" Inc. Cdr	N 84 E	33.7'

14 13
23 24

Corner common to Section 13, 14, 23, and 24, Township 26 South, Range 3 West

G.L.O. Survey Record 1882

Post			No trace
30" Cedar	N 70 E	58 lks	Cedar shell 5' high - badly burned
30" Cedar	S 82 E	19 lks	38" leaning Cedar - no visible scribing
12" Cedar	S 78 W	85 lks	No trace
24" Cedar	N 19 W	170 lks	Shell of 36" Incense Cedar - axe marks, but no visible scribing

Douglas County Renewal 6/65

Set brass cap at former position of 2½" Cedar post as set by Weyerhaeuser Company, August 1951 and scribed four new B.T.'s

Ren. #117

18" Fir	N 87 W	31.0'
12" Hemlock	N 10 E	10.0'
10" Fir	N 24 W	34.6'
28" Cedar	S 40 E	39.1'

Referenced by Glenn McChesney (Plates and "W" nails only)

28" Cedar	S 36 E	37.5'
32" Fir	N 65 E	40.4'
14" Fir	N 84 W	31.6'
24" Fir	S 22 W	57.5'