

SURVEYED FOR DEED DESCRIPTION

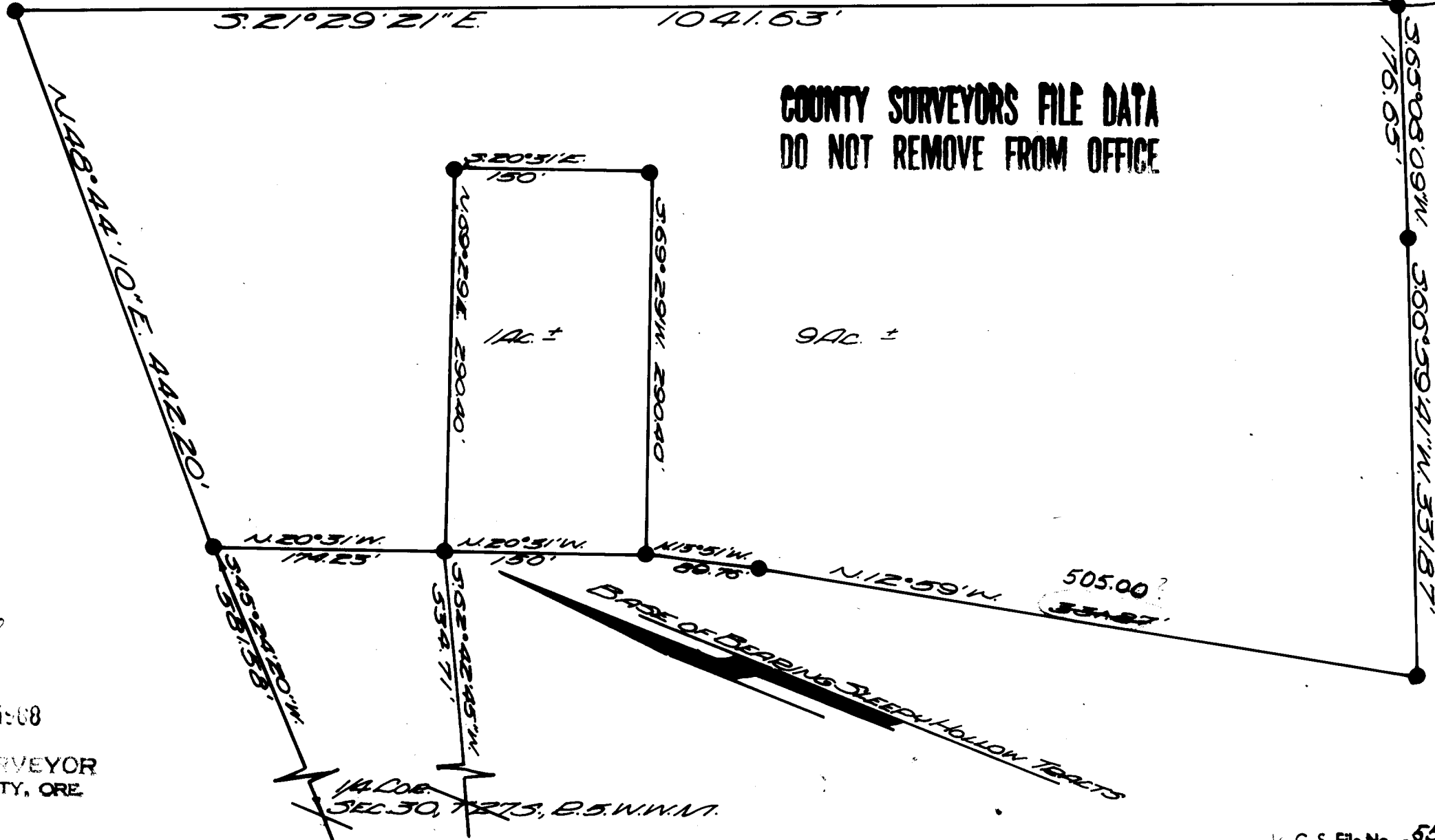
LOCATED IN SEC 30, T. 27 S., R. 5 W. W. M.

BY BAUGHMAN & ACKARET INC.

SCALE 1" = 100'

OCT 8, 1967

• 5/8" IRON ROD FOR NATIONAL LAND & INV. CO.



COUNTY SURVEYORS FILE DATA
DO NOT REMOVE FROM OFFICE

LL
JAN 9 1968
COUNTY SURVEYOR
DEWING COUNTY, ORE.