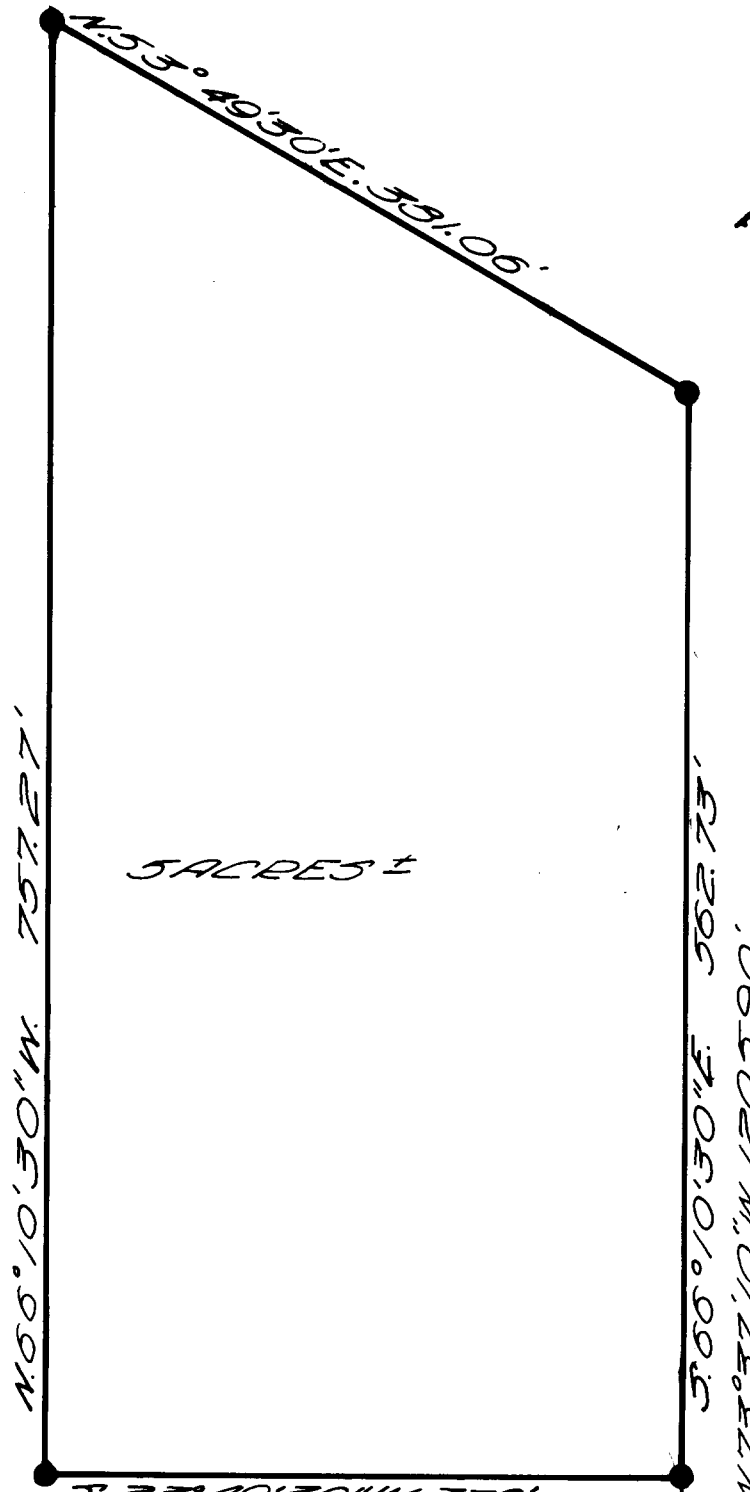


COUNTY SURVEYORS FILE DATA
DO NOT REMOVE FROM OFFICE

SURVEYED FOR NATIONAL LAND &
INVESTMENT CO. A NEVADA CORP.
BY BAUGHMAN SURVEYING SERVICE
SURVEYED FOR DEED DESCRIPTION
LOCATED IN SEC. 30 & 31, T. 27 S., R. 5 W., W.M.
SCALE 1" = 50' NOT IN 30 SEPT. 23, 1966
• SET 3/4" IRON ROD



REGISTERED
OREGON
LAND SURVEYOR

Glenn S. Baughman

JULY 14, 1961
GLENN S. BAUGHMAN
538

SACRES ±

DEC. 20 P.M. 3/4" IRON BOLT
BASE OF BEARINGS SOLAR OBSERVATION

30/25 31/30

FILED
RECEIVED

COUNTY SURVEYOR
COUNTY, ORE.