

SURVEY FOR DEED DESCRIPTION IN LOT 38. EDENBOWER ORCHARD TRACTS
 Surveyed for Melvin Kennedy
 Surveyed by Don E. Garrett
 January 23, 1967
 Scale 1" equals 100'

COUNTY SURVEYORS FILE DATA
DO NOT REMOVE FROM OFFICE

• - Set 5/8" Iron Rod
 Bearings are based on the West Line of Pacific Highway 99 Business Route C.S. File No. 39/29

REGISTERED
 OREGON
 LAND SURVEYOR

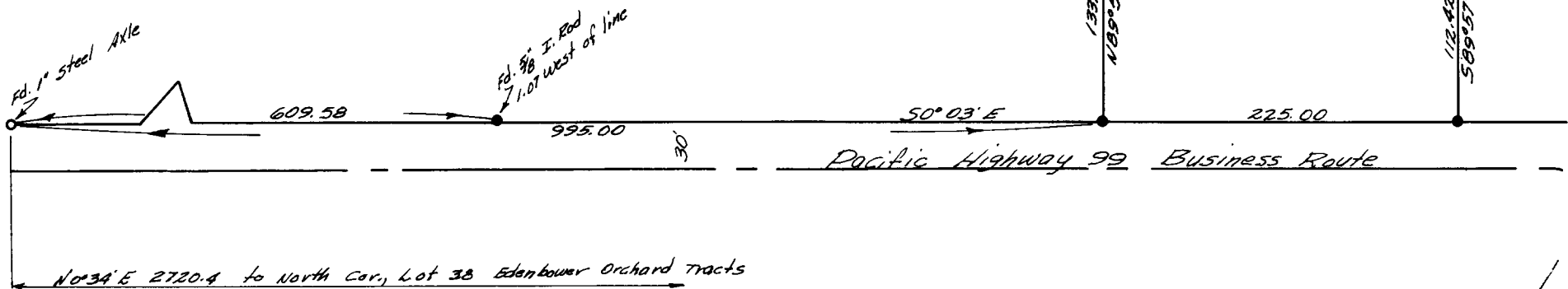
Don E. Garrett

JULY 14, 1961
 DON E. GARRETT
 544

FILED *LL*
 RECEIVED

JAN 24 1967

COUNTY SURVEYOR
 DOUGLAS COUNTY, ORE.



T. 21-6 1 DD

P C.S. File No. 55/16-4