

SURVEY TO ESTABLISH PROPERTY CORNERS SEC. 17, T26S, R3W, W.M.

Surveyed for Glen Long

Surveyed by Don E. Garrett

November 14, 1966

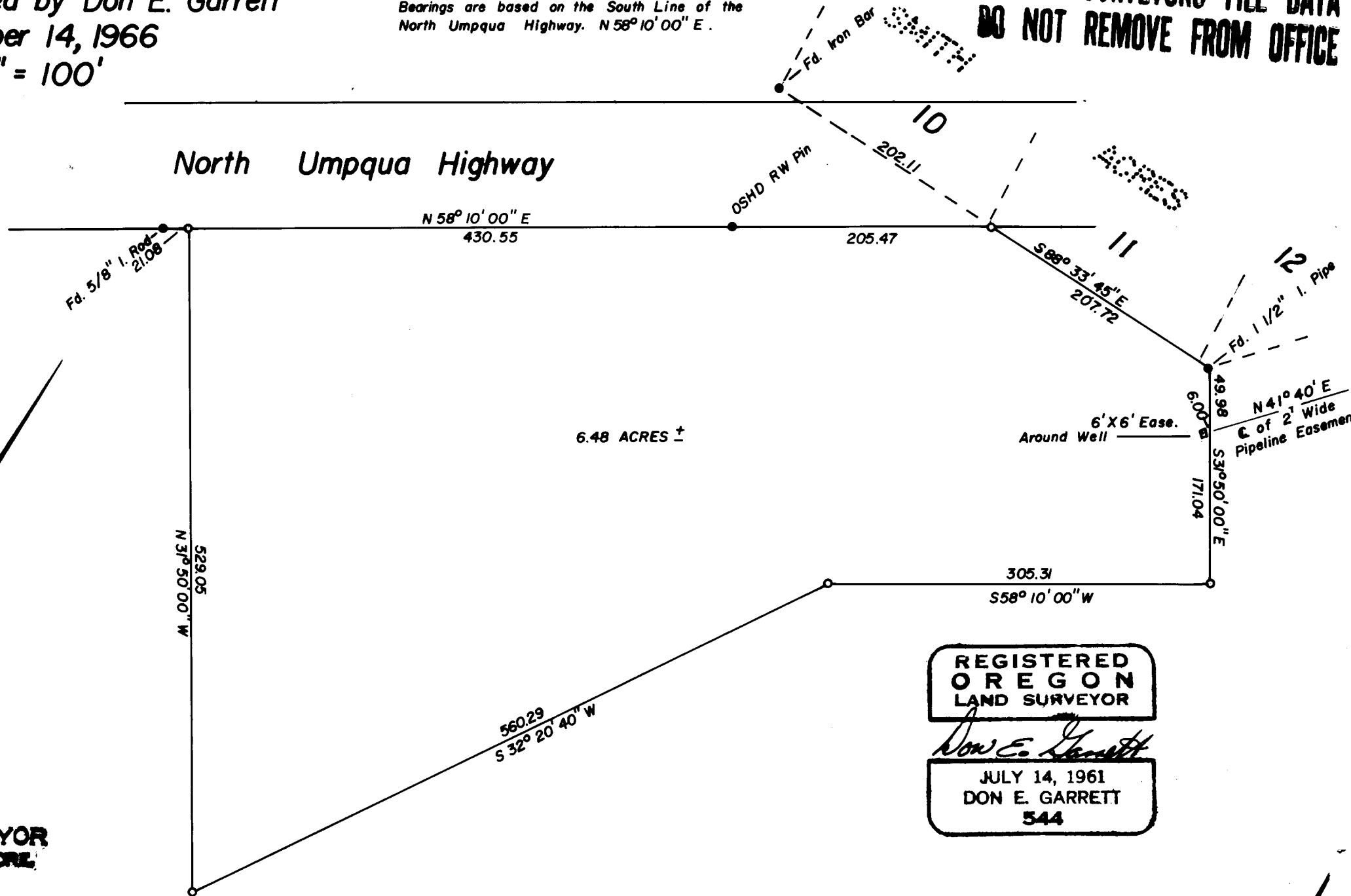
Scale 1" = 100'

o - Denotes 5/8" Iron Rod Set.

Bearings are based on the South Line of the North Umpqua Highway. N 58° 10' 00" E.

**COUNTY SURVEYORS FILE DATA
DO NOT REMOVE FROM OFFICE**

North Umpqua Highway



FILED
RECEIVED

NOV 15 1966

COUNTY SURVEYOR
DOUGLAS COUNTY, ORE.

REGISTERED
OREGON
LAND SURVEYOR

Don E. Garrett

JULY 14, 1961
DON E. GARRETT
544

SEE MAP

55/16