

**A SURVEY FOR DEED DESC.
IN SEC. 26 T.26S. R7W W.M.
SURVEYED FOR JOSEPH CLEMENT
BY DON E. GARRETT AUGUST 1966
SCALE 1"=200'**

*Bearings are based on the East Line of Prop. Surveyed, 50°07'30"W
From a Survey by Jim Byron, C.S. File No. M20-22. All 3/4" I.R.
shown are from same File No.*

**COUNTY SURVEYORS FILE DATA
DO NOT REMOVE FROM OFFICE**

1/4 - 3/4" I.R.

FILED
RECEIVED

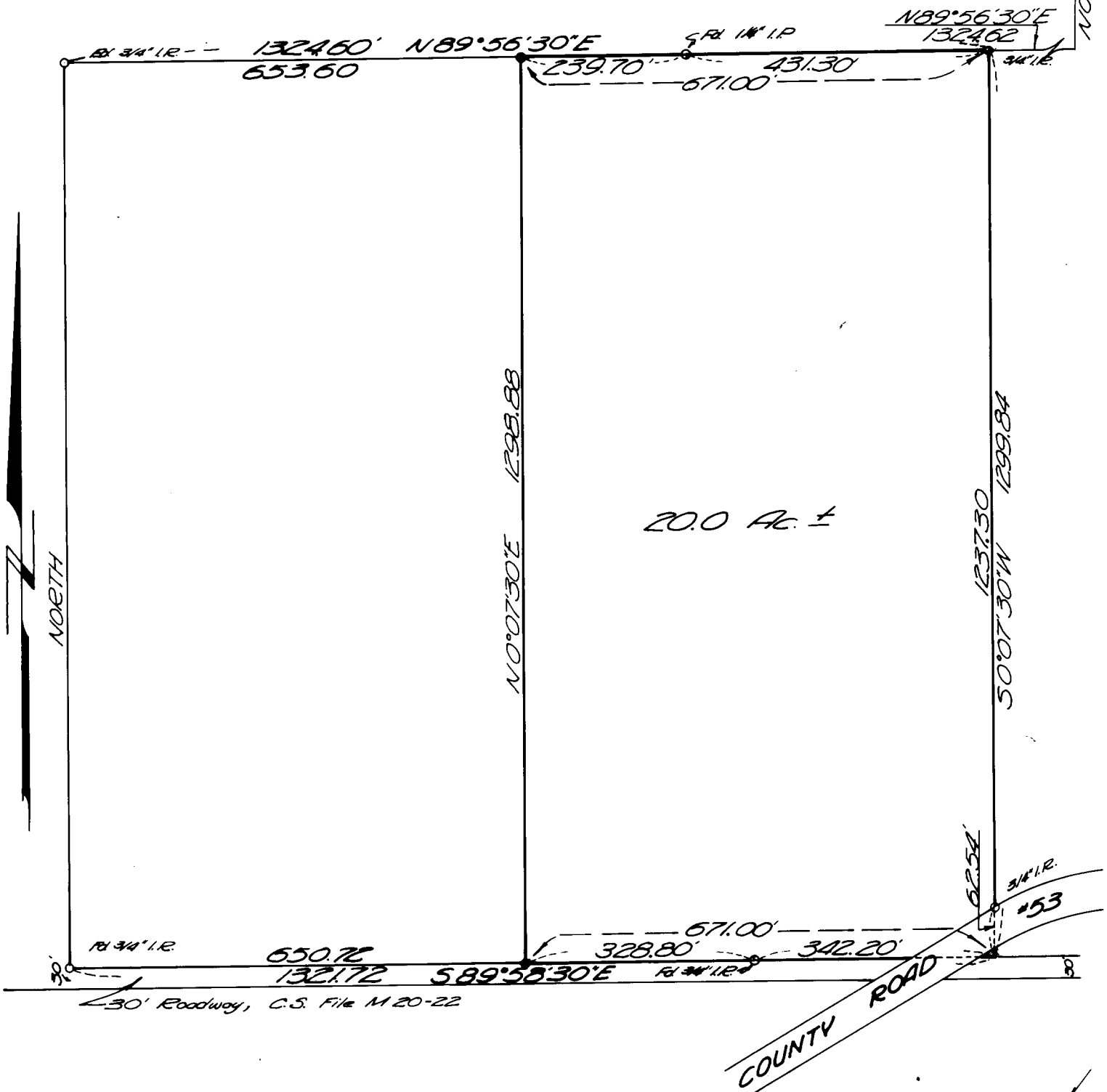
SEP 19 1966

**COUNTY SURVEYOR
NICOLAS COUNTY, ORE.**

**REGISTERED
OREGON
LAND SURVEYOR**

Don E. Garrett
**JULY 14, 1961
DON E. GARRETT
544**

25 © 25
N 0°15'00"E 1316.81



C. S. File No. 55/10-4

SE 1/4 P