

FILED *LL*  
RECEIVED

JUN 15 1966

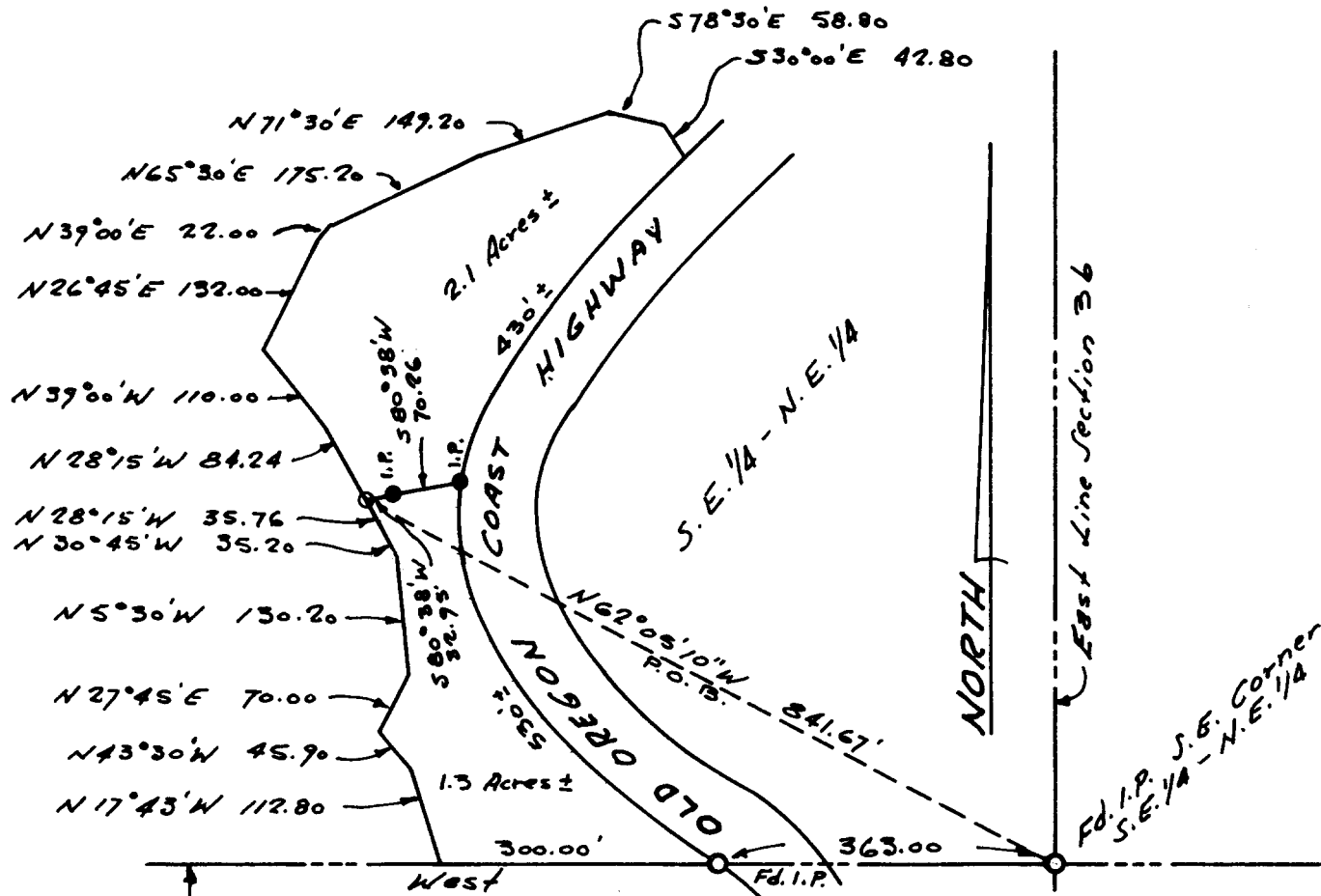
COUNTY SURVEYOR  
DOUGLAS COUNTY, ORE.

REGISTERED  
**OREGON**  
LAND SURVEYOR

*Robert W. Wade*

OCTOBER 4, 1957  
ROBERT W. WADE  
433

**COUNTY SURVEYORS FILE DATA  
DO NOT REMOVE FROM OFFICE**



South line S.E. 1/4 of the N.E. 1/4  
Section 36, Township 22 South,  
Range 13 West, W.M., Douglas  
County, Oregon.

**PROPERTY SURVEY**  
A Tract in the S.E. 1/4 of the N.E. 1/4, Section 36,  
Township 22 South, Range 13 West, W.M.,  
Douglas County, Oregon  
For Fred Taylor  
Scale: 1" = 200' 5-19-66

*R.H. Erichsen & Associates*  
5th. & Highland  
Coos Bay, Oregon