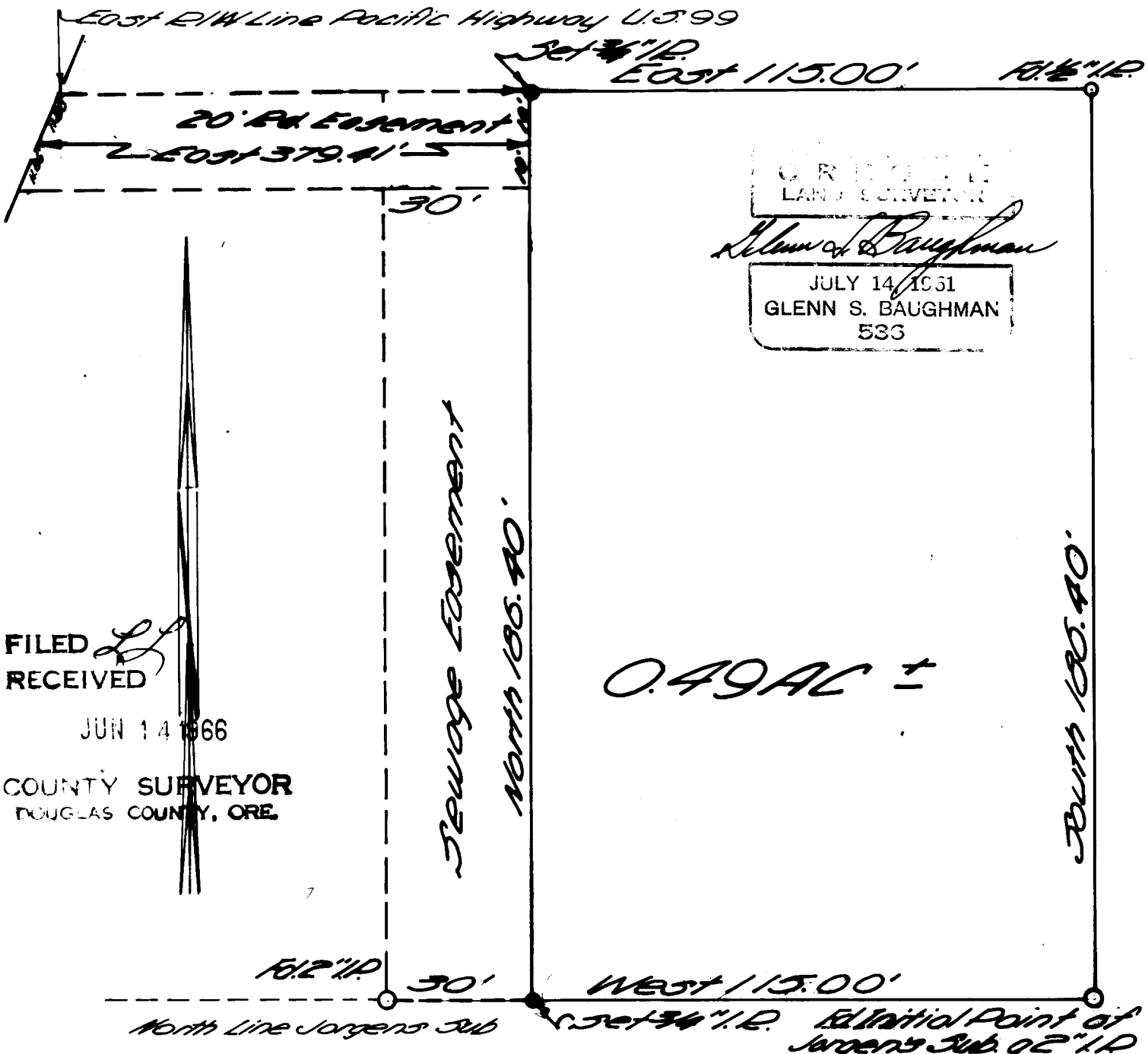


SURVEYED FOR DEED DESCRIPTION IN SEC.  
21 T. 28 S., R. 6 W. W.M.

SURVEYED FOR LACKEY REAL ESTATE  
SURVEY BY BAUGHMAN SURVEY SERVICE  
SCALE 1"=30' JUNE 13, 1966

COUNTY SURVEYORS FILE DATA  
DO NOT REMOVE FROM OFFICE



GLENN S. BAUGHMAN  
 LAND SURVEYOR  
*Glenn S. Baughman*  
 JULY 14, 1961  
 GLENN S. BAUGHMAN  
 533

FILED *LS*  
 RECEIVED  
 JUN 14 1966  
 COUNTY SURVEYOR  
 DOUGLAS COUNTY, ORE.

0.49 AC ±

Ed Initial Point of  
 Jorgens Sub 02 1/2 I.P.  
 3rd Q. Sec 16, T28S, R6W  
 Bears N129°37.6' E 1197.2'  
 C.S. File No. 55/3-2