

A SURVEY TO ESTABLISH PROP CORRS.
 IN LOT 1 BLOCK 2 GARDEN HOMES SUB.
 DOUGLAS COUNTY, OREGON
 SURVEYED FOR S.F.'S BUILDERS 6-8-66
 BY DON E. GARRETT SCALE 1"=60'

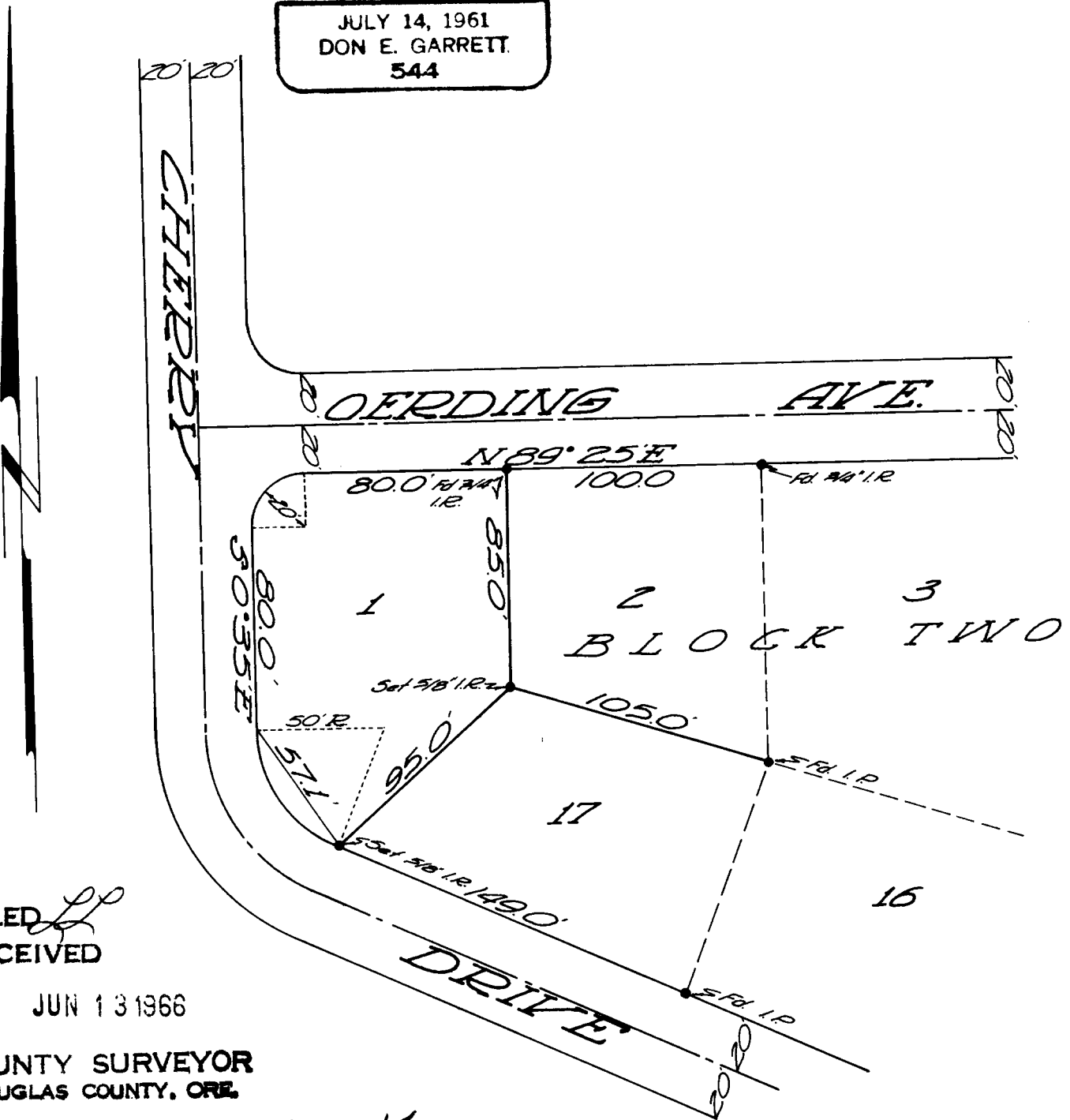
Bearings are based on the East Line of Cherry Drive, from the Plat
 of "Garden Homes" S 0° 35' E.

REGISTERED
 OREGON
 LAND SURVEYOR

Don E. Garrett

JULY 14, 1961
 DON E. GARRETT.
 544

COUNTY SURVEYORS FILE DATA
 DO NOT REMOVE FROM OFFICE



FILED *LP*
 RECEIVED

JUN 13 1966

COUNTY SURVEYOR
 DOUGLAS COUNTY, ORE.

T. 27-6 SEC. 14