

FILED *LL*  
RECEIVED

JUN 13 1966

COUNTY SURVEYOR  
DOUGLAS COUNTY, ORE.

SURVEY FOR PROP. DESC.  
IN SEC. 1 T.33 S. R.7 W. W.M.  
& SEC. 36 T.32 S. R.7 W. W.M.  
SURVEYED FOR LOUIS PRICE  
BY DON E. GARRETT  
JUNE 4, 1966  
SCALE 1"=100'

NOTE: Bearings are based on the  
South Line of Co. Rd #177, N86°20'45"E

COUNTY SURVEYOR'S FILE DATA  
DO NOT REMOVE FROM OFFICE

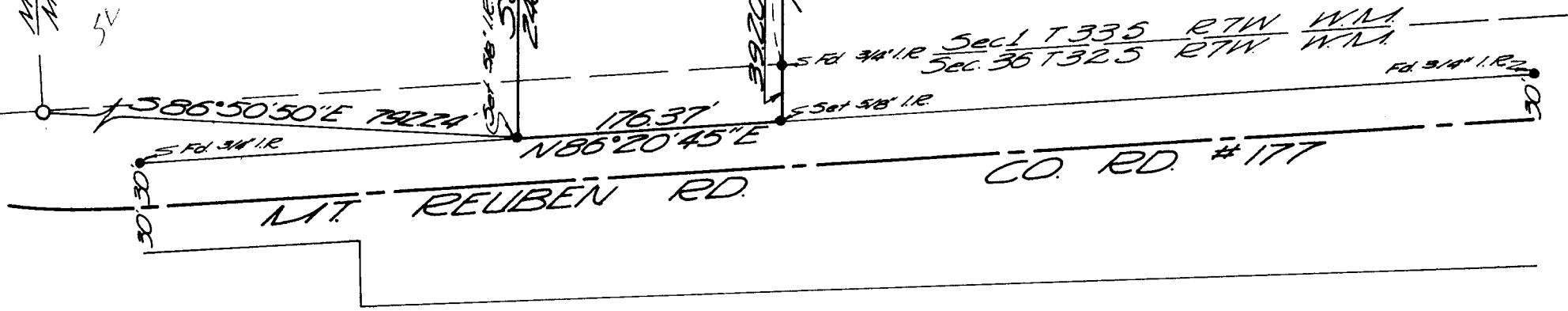
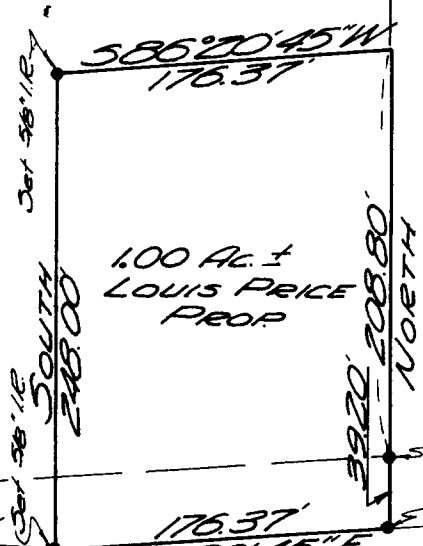
REGISTERED  
OREGON  
LAND SURVEYOR

*Don E. Garrett*

JULY 14, 1961  
DON E. GARRETT  
544

Sec 1 T33 S R7 W  
Sec 36 T32 S R7 W

*52*



C.S. File No. 55/2-2