

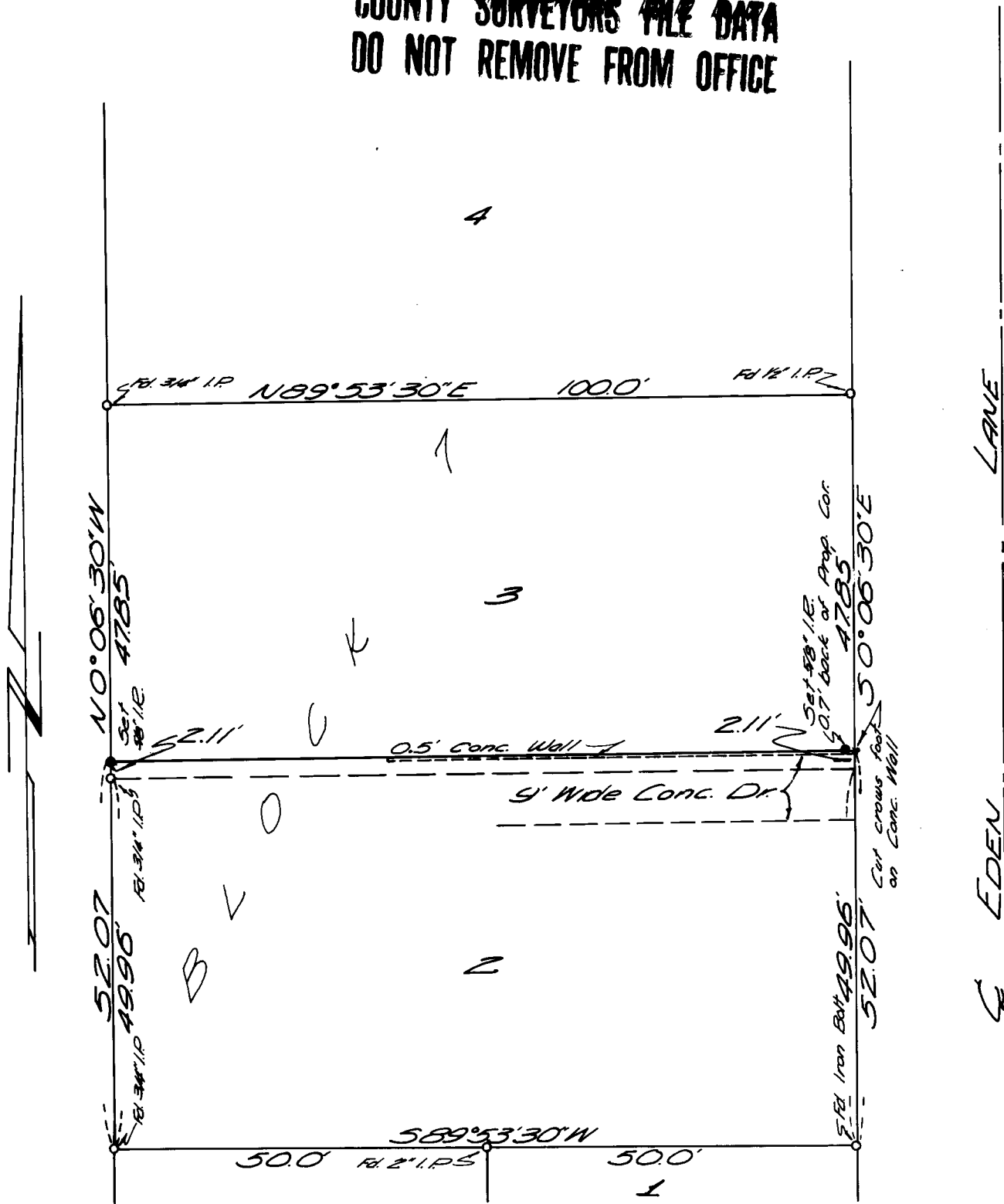
SURVEY FOR EARL WILEY
 IN LOTS 2, 3 & 4 BLOCK 7
 EDEN HEIGHTS EXTENSION
 BY MILO E. GODFREY
 MAY 21, 1966 SCALE 1"=20'
 BEARINGS BASED ON WEST LINE OF
 EDEN LANE

REGISTERED
 OREGON
 LAND SURVEYOR

Milo E. Godfrey

MAY 13, 1960
 MILO E. GODFREY
 496

COUNTY SURVEYORS FILE DATA
 DO NOT REMOVE FROM OFFICE



SURVEY FOR EARL WILEY
IN LOTS 2, 3 & 4
BLOCK 7, EDEN HEIGHTS
EXTENSION

MAY 21, 1966

J - GODFREY
CH. - DON EVANS

DIETZGEN NO. 385-3

C. S. File No. 55/1b

(SEE FOLDER FOR REMAINING INFO.)