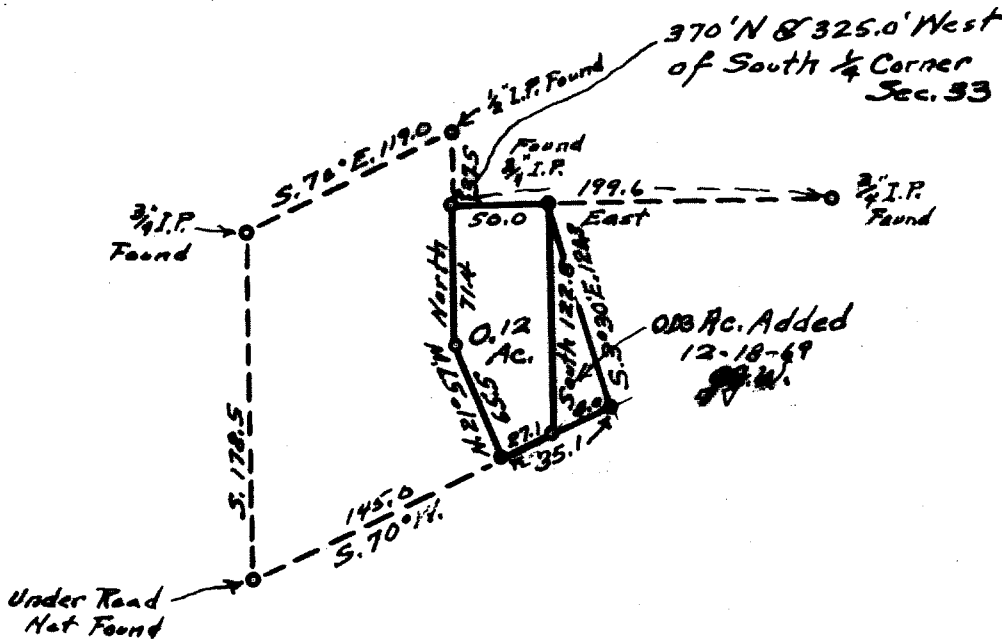


FILED
RECEIVED

NOV 12 1969

COUNTY SURVEYOR
DOUGLAS COUNTY, ORE



COUNTY SURVEYORS USE DATA
DO NOT REMOVE FROM OFFICE

COUNTY SURVEYOR'S OFFICE
DOUGLAS COUNTY, OREGON.

SURVEY FOR
RALPH CAPRON IN SECTION 33, T. 32 S., R. 6 W.
Geo. J. Wenderoth, Deputy Nov. 1969
Scale 1" = 100 ft.

REGISTERED
OREGON
LAND SURVEYOR

Geo. J. Wenderoth

MARCH 10, 1944
George J. Wenderoth
5

C. S. File No. 54/88-7