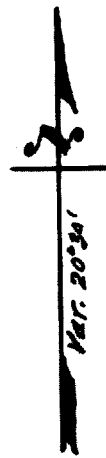
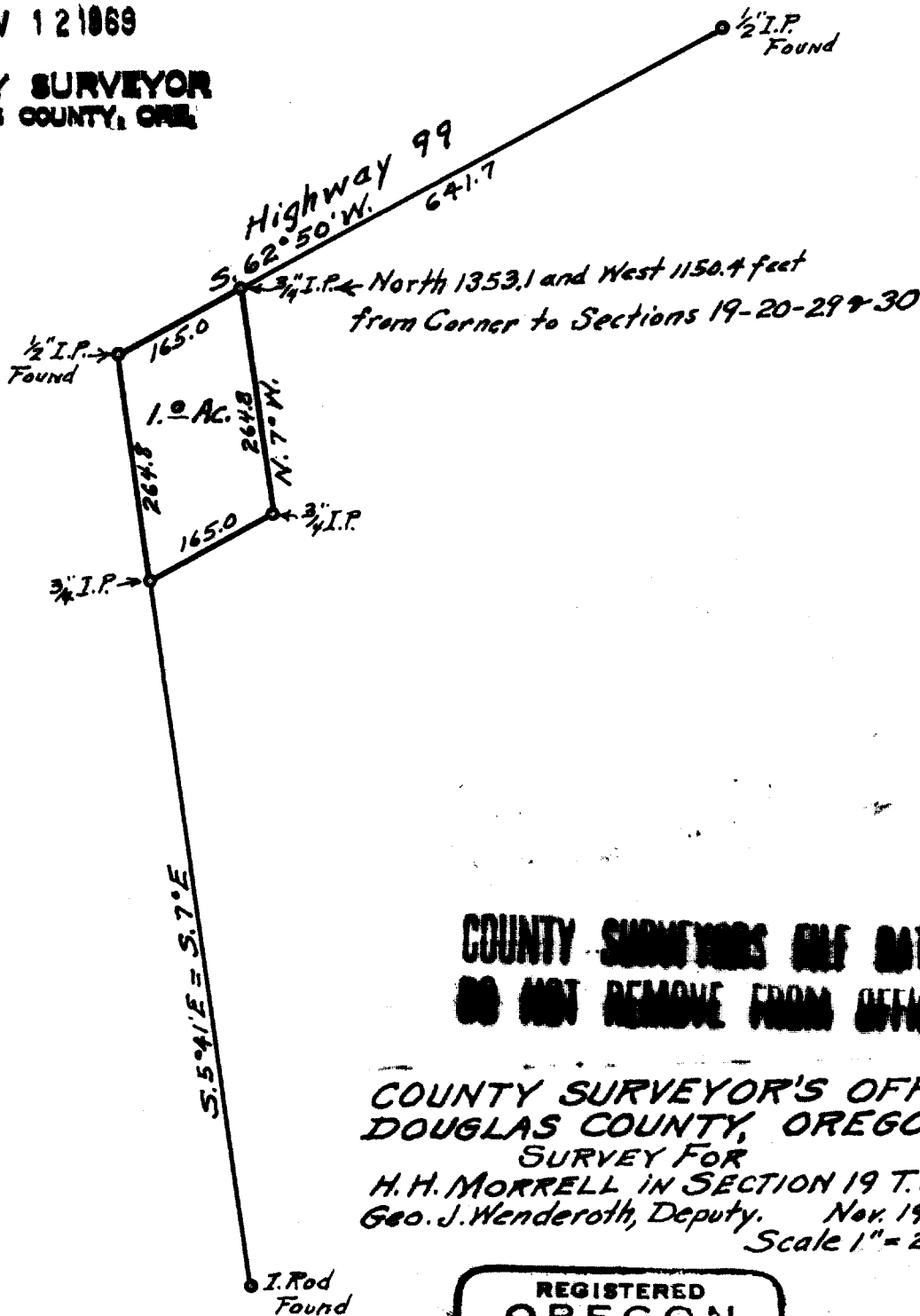


FILED
RECEIVED

NOV 12 1969

COUNTY SURVEYOR
DOUGLAS COUNTY, OREG.



COUNTY SURVEYORS FILE DATA
DO NOT REMOVE FROM OFFICE

COUNTY SURVEYOR'S OFFICE
DOUGLAS COUNTY, OREGON.
SURVEY FOR
H. H. MORRELL IN SECTION 19 T. 32 S., R. 5 W.
Geo. J. Wenderoth, Deputy. Nov. 1969
Scale 1" = 200 ft.

REGISTERED
OREGON
LAND SURVEYOR

Geo. J. Wenderoth

MARCH 10, 1944
George J. Wenderoth
5