

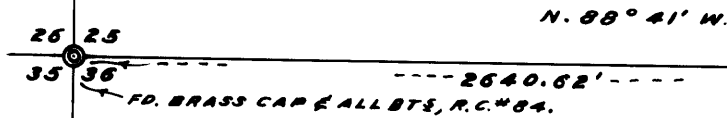
COUNTY SURVEYOR'S OFFICE  
DOUGLAS COUNTY OREGON

SURVEY TO RENEW CORNERS IN  
SEC. 25 & 36, T.28S., R.8 W., W. M.

JAMES W. BYRON COUNTY SURVEYOR  
SURVEYED JAN. 15, 1969 SCALE 1" = 500'  
SURVEYED FOR DOUGLAS CO.

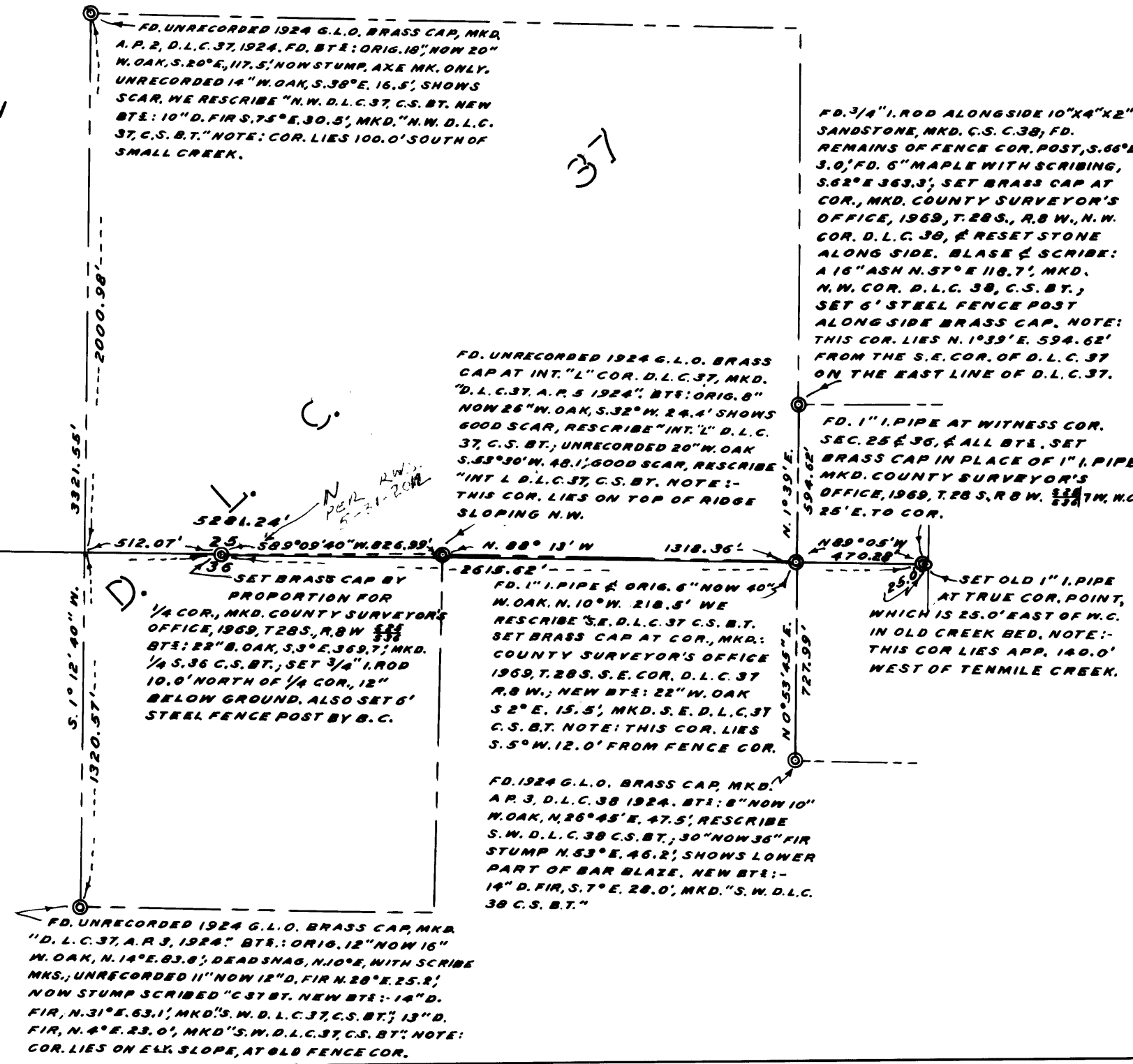
**COUNTY SURVEYORS FILE HAVE  
TO NOT REMOVE FROM OFFICE**

NOTE: BEARING ARE  
MAGNETIC, WITH A  
VAR. OF 20°00'



REGISTERED  
OPEN RANGE  
LAND SURVEYOR

*James W. Byron*  
NOV. 6 1953  
JAMES W. BYRON  
303



FD. UNRECORDED 1924 G.L.O. BRASS CAP, MKD.  
A. P. 2, D.L.C. 37, 1924. FD. BT: ORIG. 18" NOW 20"  
W. OAK, S. 20° E, 117.5'; NOW STUMP, AXE MK. ONLY.  
UNRECORDED 14" W. OAK, S. 38° E, 16.5'; SHOWS  
SCAR. WE RESCRIBE "N.W. D.L.C. 37, C.S. BT. NEW  
BT: 10" D. FIR S. 75° E, 30.5'; MKD. "N.W. D.L.C.  
37, C.S. BT." NOTE: COR. LIES 100.0' SOUTH OF  
SMALL CREEK.

FD. 3/4" I. ROD ALONGSIDE 10" X 4" X 2"  
SANDSTONE, MKD. G.S. C. 38; FD.  
REMAINS OF FENCE COR. POST, S. 66° E,  
3.0'; FD. 6" MAPLE WITH SCRIBING,  
S. 62° E 363.3'; SET BRASS CAP AT  
COR., MKD. COUNTY SURVEYOR'S  
OFFICE, 1969, T. 28S., R. 8 W., N. W.  
COR. D. L. C. 38, & RESET STONE  
ALONG SIDE. BLAZE & SCRIBE:  
A 16" ASH N. 57° E 118.7', MKD.  
N. W. COR. D. L. C. 38, C. S. BT.;  
SET 6' STEEL FENCE POST  
ALONG SIDE BRASS CAP. NOTE:  
THIS COR. LIES N. 1° 39' E, 594.62'  
FROM THE S. E. COR. OF D. L. C. 37  
ON THE EAST LINE OF D. L. C. 37.

FD. UNRECORDED 1924 G.L.O. BRASS  
CAP AT INT. "L" COR. D. L. C. 37, MKD.  
"D. L. C. 37, A. P. 5 1924"; BT: ORIG. 8"  
NOW 26" W. OAK, S. 32° W, 24.4' SHOWS  
GOOD SCAR, RESCRIBE "INT. L" D. L. C.  
37, C. S. BT.; UNRECORDED 20" W. OAK  
S. 53° 30' W, 48.1'; GOOD SCAR, RESCRIBE  
"INT. L. D. L. C. 37, C. S. BT. NOTE:-  
THIS COR. LIES ON TOP OF RIDGE  
SLOPING N.W.

FD. 1" I. PIPE AT WITNESS COR.  
SEC. 25 & 36, & ALL BTs. SET  
BRASS CAP IN PLACE OF 1" I. PIPE  
MKD. COUNTY SURVEYOR'S  
OFFICE, 1969, T. 28S., R. 8 W. 22 1/2' W. MC.  
25' E. TO COR.

SET BRASS CAP BY  
PROPORTION FOR  
1/4 COR., MKD. COUNTY SURVEYOR'S  
OFFICE, 1969, T. 28S., R. 8 W. 5 1/2'  
BT: 22" B. OAK, S. 3° E, 369.7'; MKD.  
1/4 S. 36 C. S. BT.; SET 3/4" I. ROD  
10.0' NORTH OF 1/4 COR., 12"  
BELOW GROUND. ALSO SET 6'  
STEEL FENCE POST BY B. C.

FD. 1" I. PIPE & ORIG. 6" NOW 40"  
W. OAK, N. 10° W, 218.5' WE  
RESCRIBE "S.E. D.L.C. 37 C.S. BT.  
SET BRASS CAP AT COR., MKD:  
COUNTY SURVEYOR'S OFFICE  
1969, T. 28S. S. E. COR. D. L. C. 37  
R. 8 W.; NEW BT: 22" W. OAK  
S 2° E, 15.5'; MKD. S. E. D. L. C. 37  
C. S. BT. NOTE: THIS COR. LIES  
S. 5° W, 12.0' FROM FENCE COR.

SET OLD 1" I. PIPE  
AT TRUE COR. POINT,  
WHICH IS 25.0' EAST OF W.C.  
IN OLD CREEK BED. NOTE:-  
THIS COR LIES APP. 140.0'  
WEST OF TENMILE CREEK.

FD. 1924 G.L.O. BRASS CAP, MKD.  
A. P. 3, D.L.C. 38 1924. BT: 8" NOW 10"  
W. OAK, N. 26° 45' E, 47.5'; RESCRIBE  
S. W. D. L. C. 38 C. S. BT.; 30" NOW 36" FIR  
STUMP N. 53° E, 46.2'; SHOWS LOWER  
PART OF BAR BLAZE. NEW BT:-  
14" D. FIR, S. 7° E, 28.0'; MKD. "S. W. D. L. C.  
38 C. S. BT."

FD. UNRECORDED 1924 G.L.O. BRASS CAP, MKD.  
"D. L. C. 37, A. P. 3, 1924." BT: ORIG. 12" NOW 16"  
W. OAK, N. 14° E, 83.8'; DEAD SNAG, N. 10° E, WITH SCRIBE  
MKS.; UNRECORDED 11" NOW 12" D. FIR N. 28° E, 25.2';  
NOW STUMP SCRIBED "C 37 BT. NEW BT:- 14" D.  
FIR, N. 31° E, 63.1'; MKD. "S. W. D. L. C. 37, C. S. BT."; 13" D.  
FIR, N. 4° E, 23.0'; MKD. "S. W. D. L. C. 37, C. S. BT." NOTE:  
COR. LIES ON EX. SLOPE, AT OLD FENCE COR.