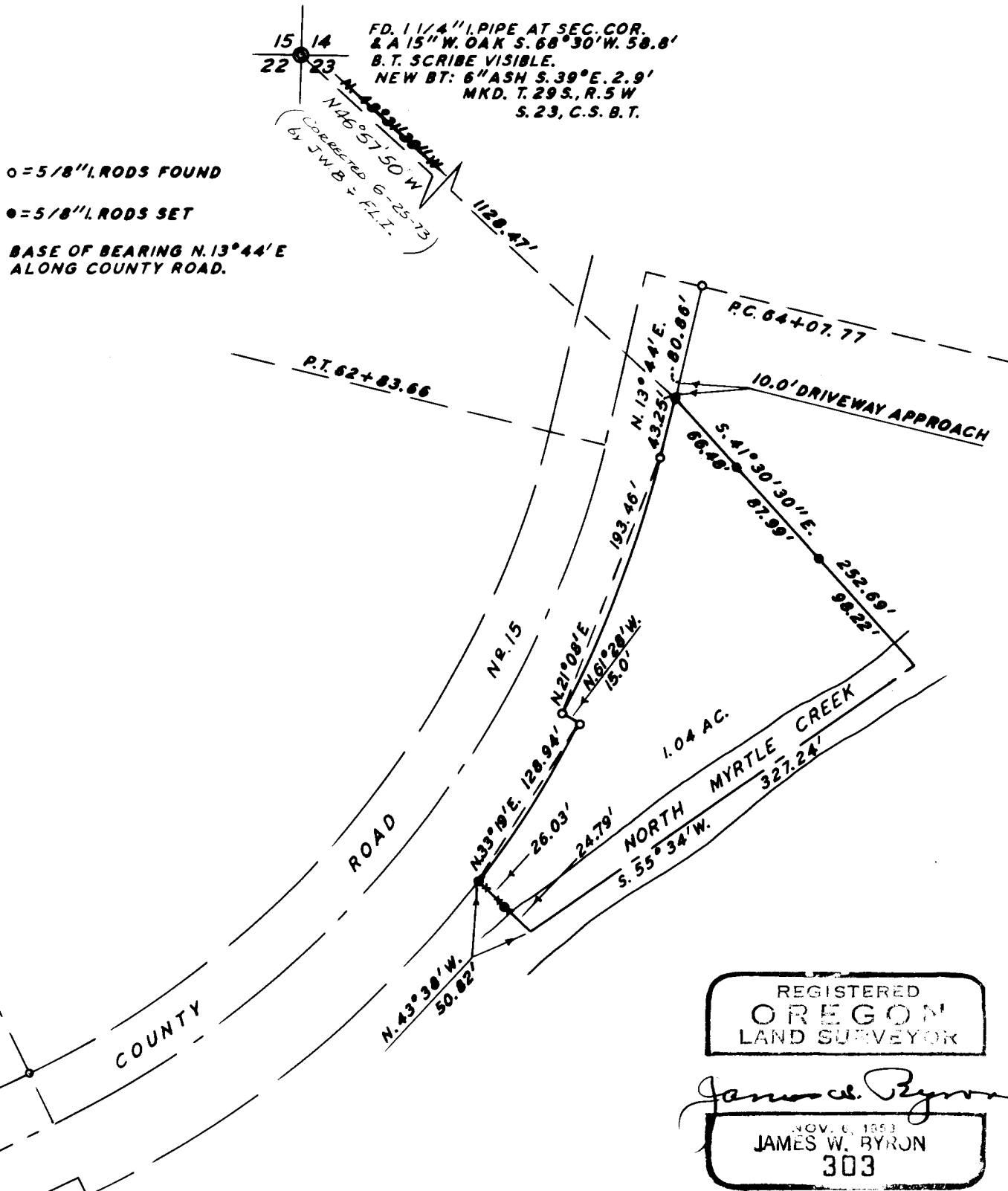


COUNTY SURVEYOR'S OFFICE  
DOUGLAS COUNTY OREGON

SURVEY TO MONUMENT PROPERTY  
N. W. 1/4 SECTION 23, T. 29 S., R. 5 W. W. M.

JAMES W. BYRON COUNTY SURVEYOR  
SURVEYED DEC. 9, 1968 SCALE 1" = 100'  
SURVEYED FOR CO. ROAD DEPT. & R. L. SPROUL

**COUNTY SURVEYOR'S FILE DATA**  
**DO NOT REMOVE FROM OFFICE**



REGISTERED  
OREGON  
LAND SURVEYOR

*James W. Byron*  
NOV. 6, 1953  
JAMES W. BYRON  
303

12.9.63

~~Jan~~  
~~1964~~

Survey for Sprout  
Proc.

DIETZEN NO. 386-6

C. S. File No. 54/74 b

(SEE FOLDER FOR MORE INFO.)