

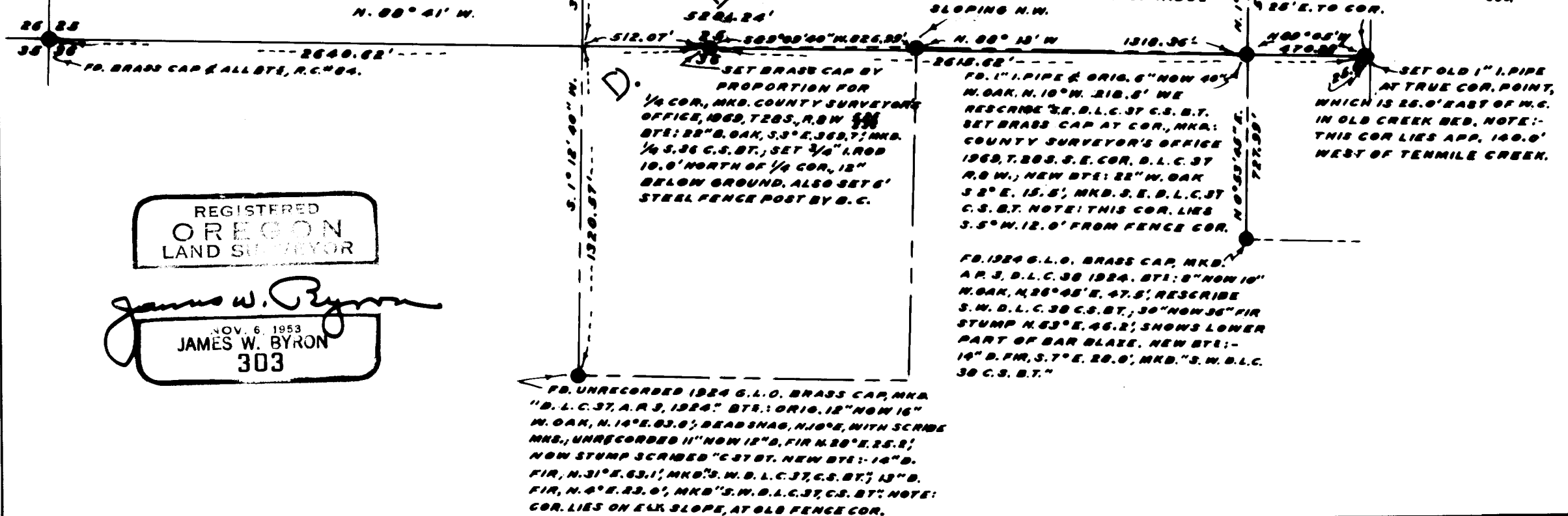
COUNTY SURVEYOR'S OFFICE
DOUGLAS COUNTY OREGON

SURVEY TO RENEW CORNERS IN
SEC. 25 & 36, T.28S., R.8 W., W. M.

JAMES W. BYRON COUNTY SURVEYOR
SURVEYED JAN. 15, 1969 SCALE 1"=500'
SURVEYED FOR DOUGLAS CO.

**COUNTY SURVEYOR'S OFFICE
DO NOT REMOVE FROM OFFICE**

NOTE: BEARINGS ARE
MAGNETIC, WITH A
VAR. OF 20°00'



REGISTERED
OREGON
LAND SURVEYOR

James W. Byron
NOV. 6, 1953
JAMES W. BYRON
303

FB. UNRECORDED 1924 G.L.O. BRASS CAP, MKA,
A.P. 2, D.L.C. 37, 1924. BTE: ORIG. 10" NOW 20"
N. OAK, S. 20° E, 17.5', NOW STUMP, AXE MK. ONLY.
UNRECORDED 14" N. OAK, S. 38° E, 16.5', SHOWS
SCAR, WE RESCRIBE "N.W. D.L.C. 37, C.S. BT. NEW
BTE: 10" D. FM S. 75° E, 30.8', MKA. "N.W. D.L.C.
37, C.S. B.T." NOTE: COR. LIES 100.0' SOUTH OF
SMALL CREEK.

37

FB. 3/4" I. ROD ALONGSIDE 10" X 4" X 2"
SANDSTONE, MKA. C.S. C. 36; FB.
REMAINS OF FENCE COR. POST, S. 66° E,
3.0', FB. 6" MAPLE WITH SCRIBING,
S. 62° E 363.3'; SET BRASS CAP AT
COR., MKA. COUNTY SURVEYOR'S
OFFICE, 1969, T. 28 S., R. 8 W., N. W.
COR. D.L.C. 36, & RESET STONE
ALONG SIDE. BLAZE & SCRIBE:
A 16" ASH N. 57° E 10.7', MKA.
N.W. COR. D.L.C. 36, C.S. B.T.;
SET 6' STEEL FENCE POST
ALONG SIDE BRASS CAP. NOTE:
THIS COR. LIES N. 1° 39' E. 596.62'
FROM THE S.E. COR. OF D.L.C. 37
ON THE EAST LINE OF D.L.C. 37.

FB. UNRECORDED 1924 G.L.O. BRASS
CAP AT INT. "L" COR. D.L.C. 37, MKA.
"D.L.C. 37, A.P. 3 1924" BTE: ORIG. 0"
NOW 26" N. OAK, S. 32° W. 24.4' SHOWS
GOOD SCAR, RESCRIBE "INT. L" D.L.C.
37, C.S. B.T.; UNRECORDED 20" N. OAK
S. 53° 30' W. 48.1', GOOD SCAR, RESCRIBE
"INT. L D.L.C. 37, C.S. B.T. NOTE:-
THIS COR. LIES ON TOP OF RIDGE
SLOPING N.W.

FB. 1" I. PIPE AT WITNESS COR.
SEC. 25 & 36, & ALL BTE. SET
BRASS CAP IN PLACE OF 1" I. PIPE
MKA. COUNTY SURVEYOR'S
OFFICE, 1969, T. 28 S., R. 8 W., W. M.
28° E. TO COR.

SET BRASS CAP BY
PROPORTION FOR
1/4 COR., MKA. COUNTY SURVEYOR'S
OFFICE, 1969, T. 28 S., R. 8 W., W. M.
BTE: 22" N. OAK, S. 3° E, 369.7'; MKA.
1/4 S. 36 C.S. B.T.; SET 3/8" I. ROD
10.0' NORTH OF 1/4 COR., 12"
BELOW GROUND, ALSO SET 6'
STEEL FENCE POST BY G. C.

FB. 1" I. PIPE & ORIG. 6" NOW 40"
N. OAK, N. 10° W. 218.8' WE
RESCRIBE S.E. D.L.C. 37 C.S. B.T.
SET BRASS CAP AT COR., MKA:
COUNTY SURVEYOR'S OFFICE
1969, T. 28 S., S.E. COR. D.L.C. 37
R. 8 W.; NEW BTE: 22" N. OAK
S. 2° E. 15.8'; MKA. S.E. D.L.C. 37
C.S. B.T. NOTE: THIS COR. LIES
S. 5° W. 12.0' FROM FENCE COR.

SET OLD 1" I. PIPE
AT TRUE COR. POINT,
WHICH IS 25.0' EAST OF W.C.
IN OLD CREEK BED. NOTE:-
THIS COR. LIES APP. 140.0'
WEST OF TENMILE CREEK.

FB. 1924 G.L.O. BRASS CAP, MKA.
A.P. 3, D.L.C. 36 1924. BTE: 8" NOW 10"
N. OAK, N. 26° 05' E. 47.5', RESCRIBE
S.W. D.L.C. 36 C.S. B.T.; 30" NOW 36" FIR
STUMP N. 63° E. 46.2', SHOWS LOWER
PART OF BAR BLAZE. NEW BTE:-
14" D. FM, S. 7° E. 20.0', MKA. "S.W. D.L.C.
36 C.S. B.T."

FB. UNRECORDED 1924 G.L.O. BRASS CAP, MKA
"D.L.C. 37, A.P. 3, 1924" BTE.: ORIG. 12" NOW 16"
N. OAK, N. 14° E. 63.0'; DEAD SNAG, N. 10° E, WITH SCRIBE
MKA; UNRECORDED 11" NOW 12" D. FIR N. 28° E. 25.2';
NOW STUMP SCRIBED "C 37 BT. NEW BTE: 14" D.
FIR, N. 31° E. 63.1'; MKA. "S.W. D.L.C. 37, C.S. B.T." 13" D.
FIR, N. 4° E. 23.0'; MKA. "S.W. D.L.C. 37, C.S. B.T." NOTE:
COR. LIES ON ELY. SLOPE, AT OLD FENCE COR.

C.S. FILE 54/70