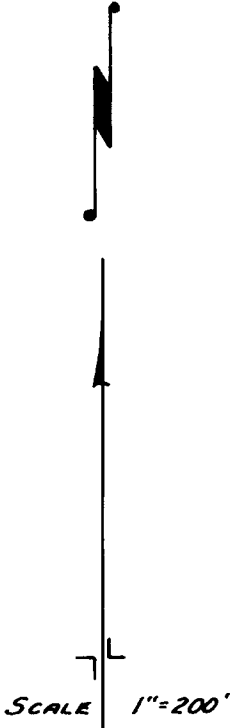
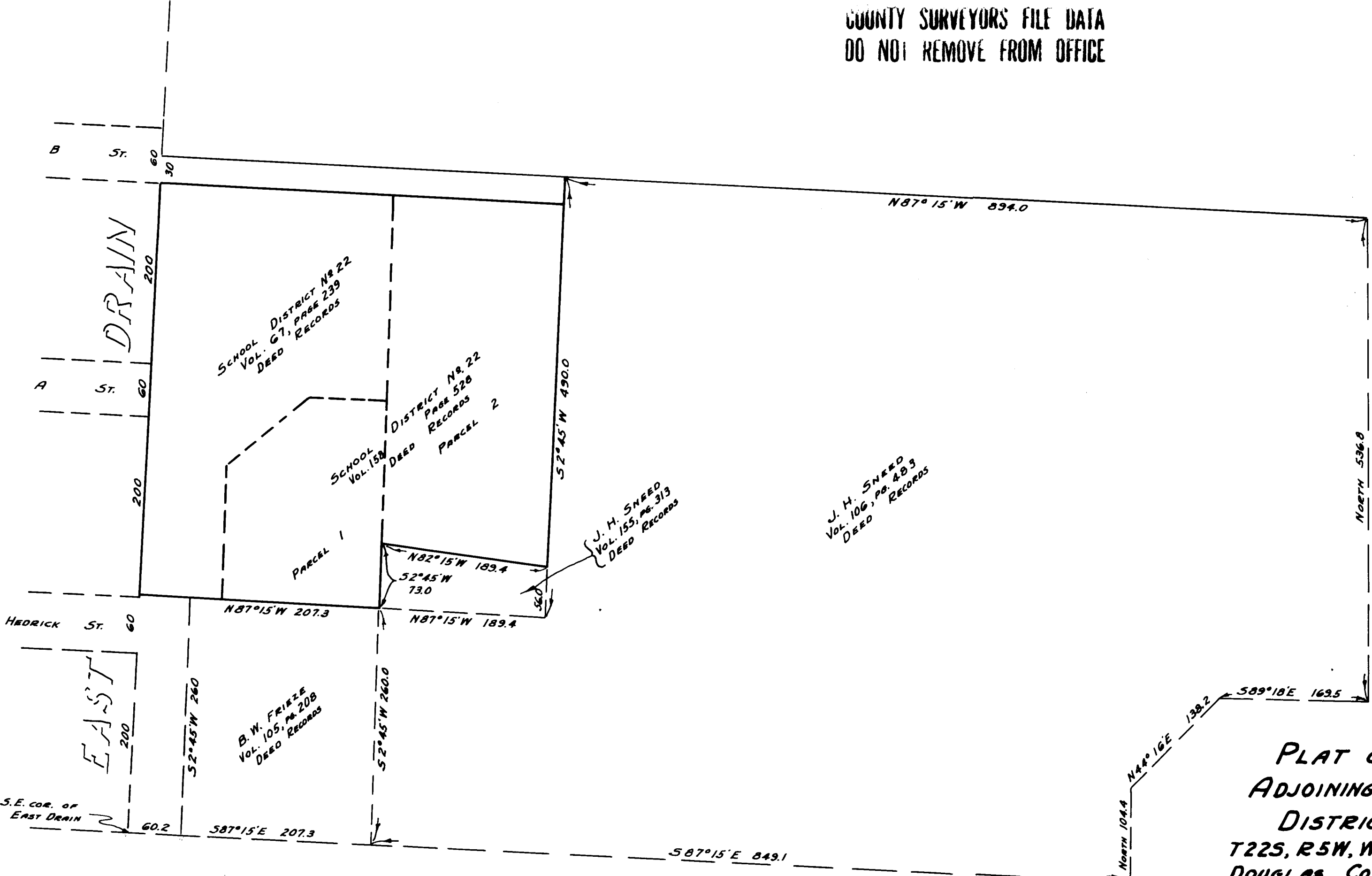


COUNTY SURVEYORS FILE DATA
DO NOT REMOVE FROM OFFICE



**PLAT OF DEEDS
ADJOINING SCHOOL
DISTRICT NO. 22.
T22S, R5W, W.M. - DRAIN
DOUGLAS COUNTY, OREGON
BEN B. IRVING
COUNTY SURVEYOR**