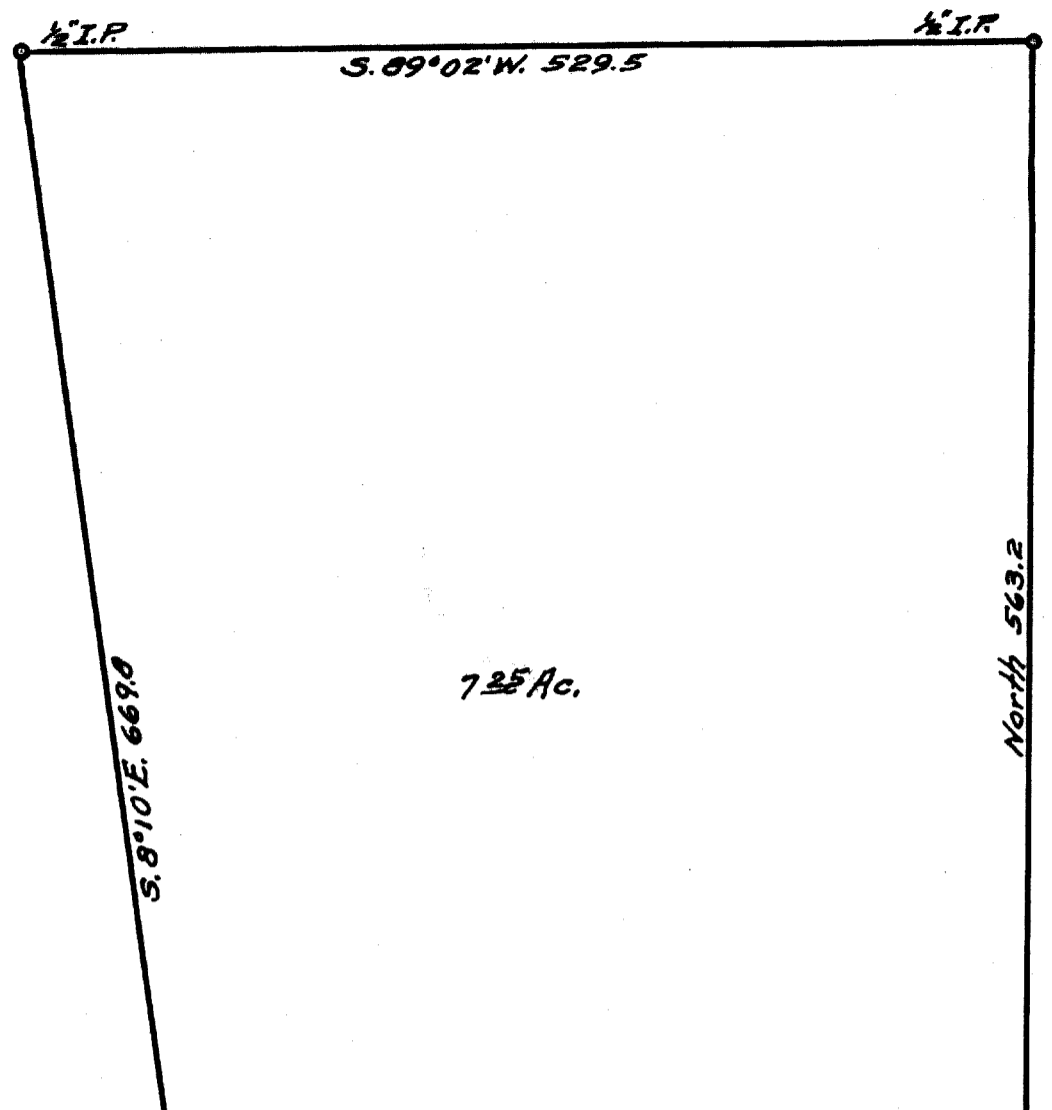


Bearings from Co. Surv.
of Feb. 1965



FILED *LL*
RECEIVED
FEB 19 1968

COUNTY SURVEYOR
DOUGLAS COUNTY, OREG.

COUNTY SURVEYORS FILE DATA
DO NOT REMOVE FROM OFFICE

COUNTY SURVEYOR'S OFFICE
DOUGLAS COUNTY, OREGON.
SURVEY FOR
Arthur Gadecke in Section 4, T.32S., R.4W.
Geo. J. Wenderoth, Deputy. Feb. 1968
Scale 1"=100ft.

REGISTERED
OREGON
LAND SURVEYOR

Geo. J. Wenderoth
MARCH 10, 1944
George J. Wenderoth
5

