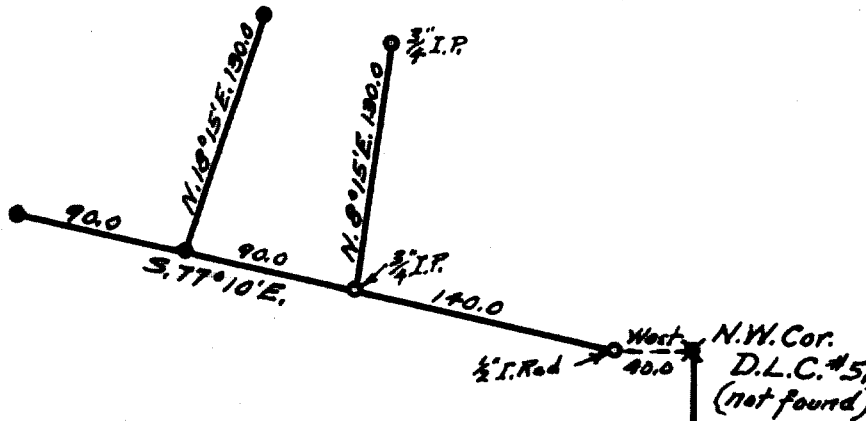


RECEIVED

MAY 14 1968

COUNTY SURVEYOR
DOUGLAS COUNTY, ORE.

- Corners Found
- Corners Renewed



Bearing from Markham Survey

North 620.4

**COUNTY SURVEYOR'S FILE BOOK
DO NOT REMOVE FROM OFFICE**

**COUNTY SURVEYOR'S OFFICE
DOUGLAS COUNTY, OREGON.**

**SURVEY FOR
LAWRENCE J. BOYLE IN SECTION 21, T. 30S., R. 5W.
Geo. J. Wenderoth, Deputy. May 1968
Scale 1" = 100ft.**

REGISTERED
OREGON
LAND SURVEYOR

Geo. J. Wenderoth

MARCH 19, 1944
George J. Wenderoth
5

21 22
28 27 Brass Cap