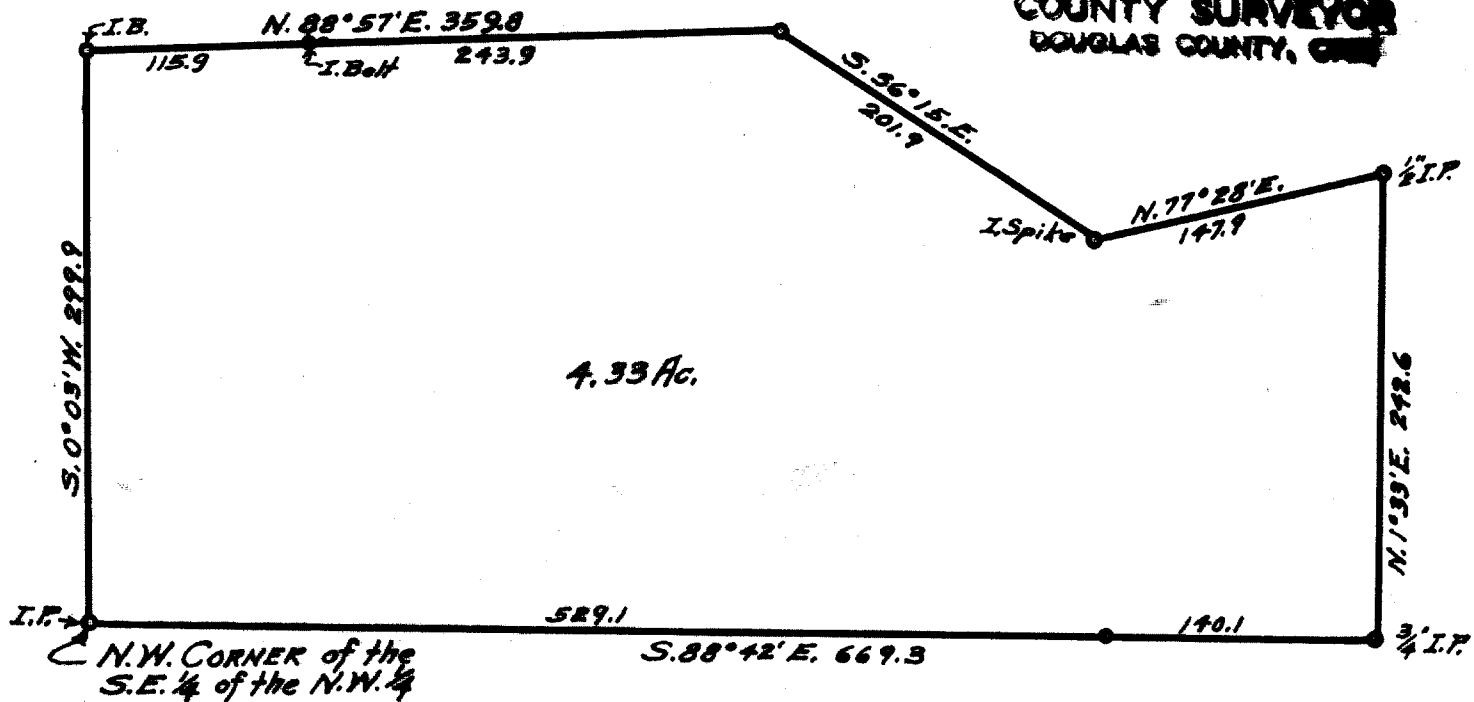


FILED
RECEIVED

JUL 10 1967

COUNTY SURVEYOR
DOUGLAS COUNTY, OREGON



COUNTY SURVEYOR'S OFFICE
DOUGLAS COUNTY, OREGON.
SURVEY FOR
DONALD W. BRADY, SEC. 23, T. 32S, R. 5W.
Geo. J. Wenderoth, Deputy. June 1967
Scale 1" = 100 ft.



Geo. J. Wenderoth



COUNTY SURVEYORS FILE DATA
DO NOT REMOVE FROM OFFICE

No 1/2 P

C.S. File No. 54/45-2