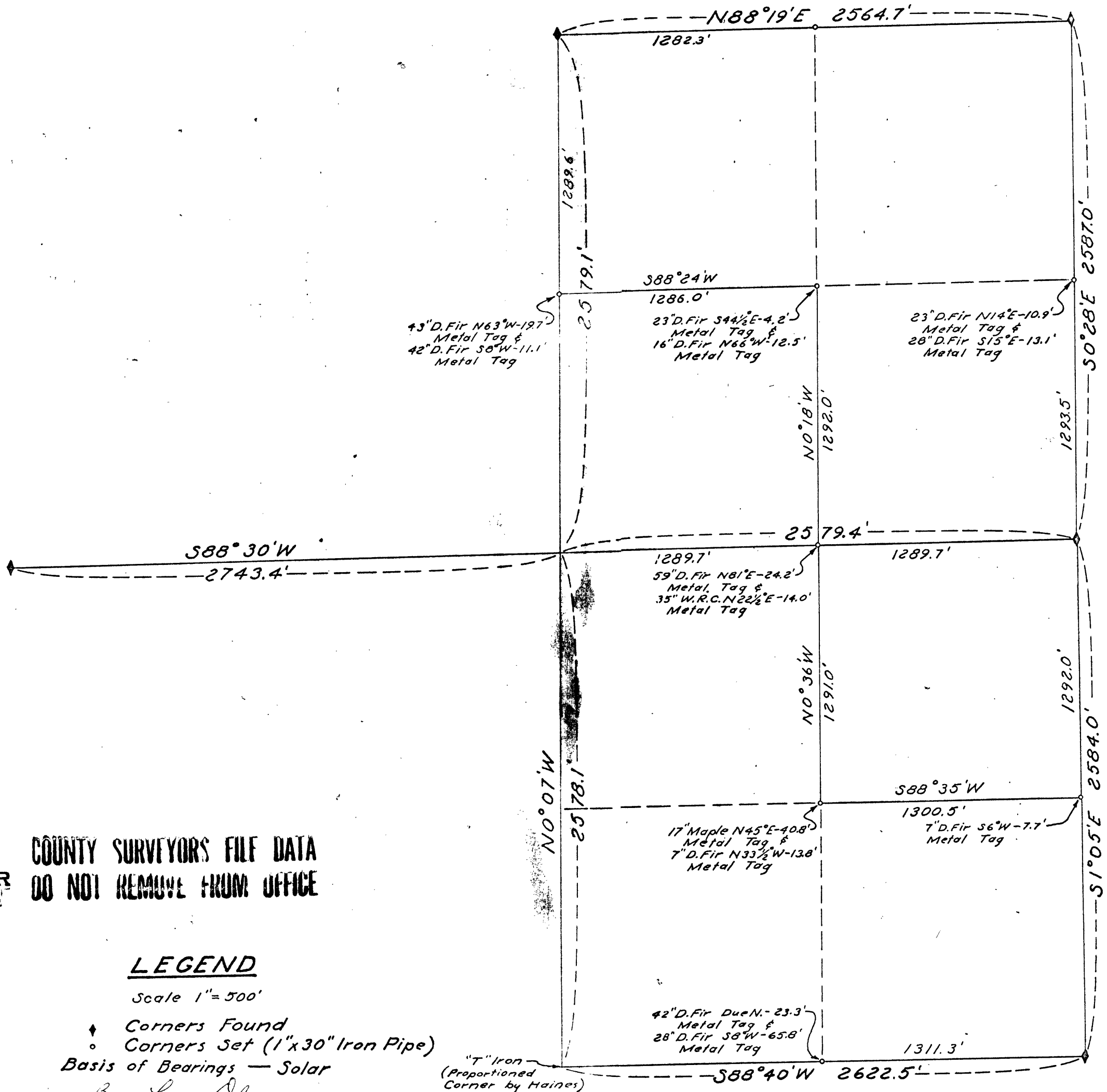


SEC. 20, T20S, R7W, W.M.
Douglas County, Oregon



FILED
RECEIVED

DEC 5 1966

COUNTY SURVEYOR
DOUGLAS COUNTY, ORE.

COUNTY SURVEYORS FILE DATA
DO NOT REMOVE FROM OFFICE

LEGEND

Scale 1" = 500'

- ◆ Corners Found
 - Corners Set (1"x30" Iron Pipe)
 - Basis of Bearings — Solar
- By Leon Olson

"T" Iron
(Proportioned
Corner by Haines)

Nov. 29, 1966

C. S. File No. 54/37

SUBDIVISION OF SECTION 20, T20S., R. 7W. for B. L. M.
filed 12/5/66 By Leon Olson

C.S. File 54/37

Map File 1

(Not signed as Mr. Olson
could not use stamps, BLM wouldn't
guarantee.
Use corners at own risk!)

NOTE: ↑

CS 54/37A