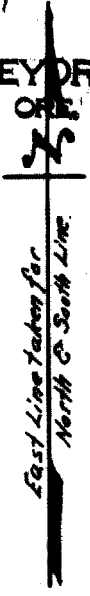


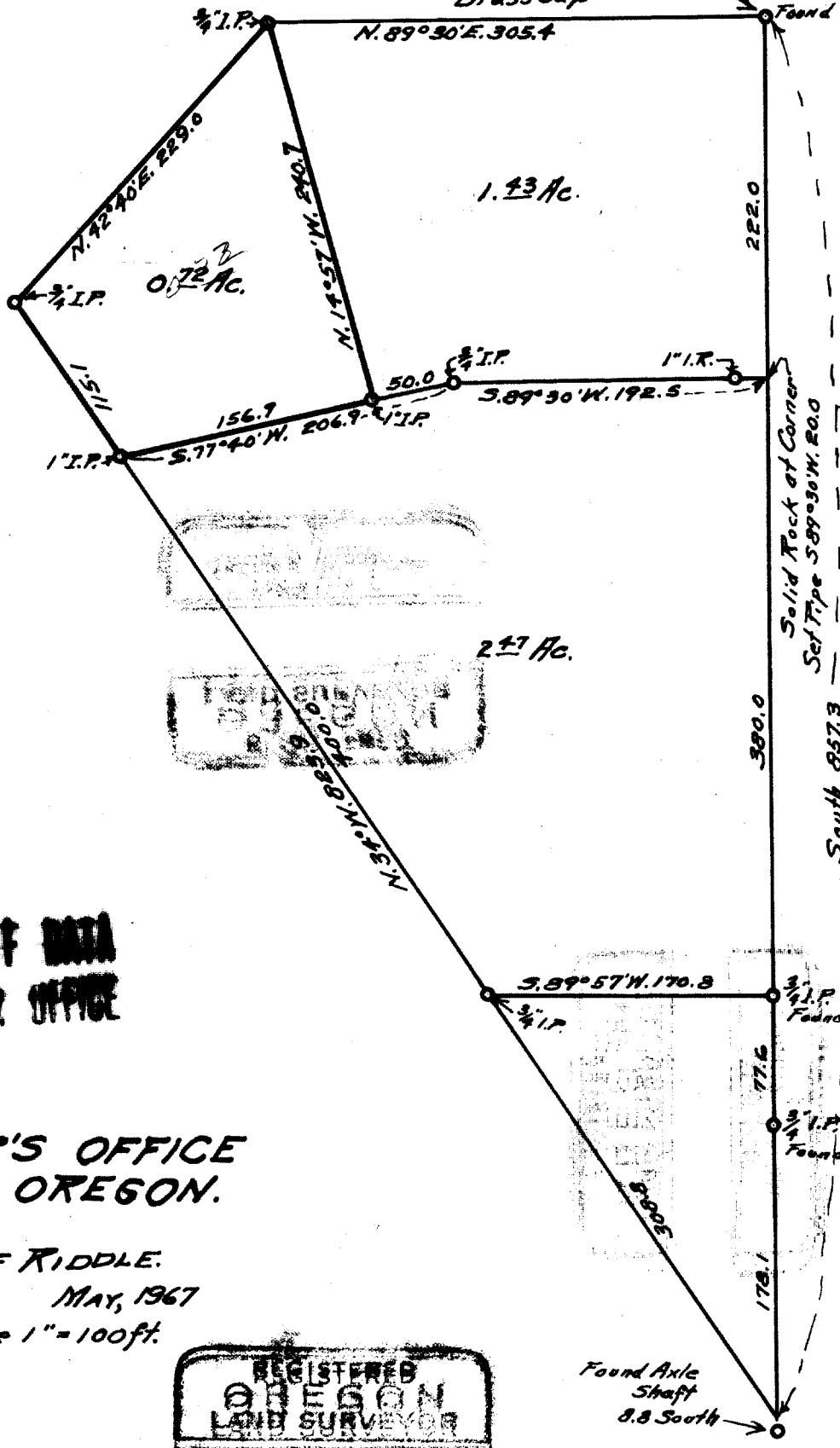
FILED *LL*
RECEIVED

MAY 26 1967

COUNTY SURVEYOR
DOUGLAS COUNTY, ORE.



N.E. Cor. J.C. Vandenberg
D.L.C. No. 47
Brass Cap



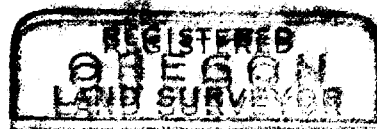
**COUNTY SURVEYOR'S OFFICE DATA
DO NOT REMOVE FROM OFFICE**

**COUNTY SURVEYOR'S OFFICE
DOUGLAS COUNTY, OREGON.**

**SURVEY FOR
M.G. HIXSON, IN CITY OF RIDDLE.
GEO. J. WENDEROTH, DEPUTY. MAY, 1967**

Scale 1" = 100ft.

T 30-6-13



George J. Wenderoth
George J. Wenderoth

Found Axle
Shaft
8.8 South