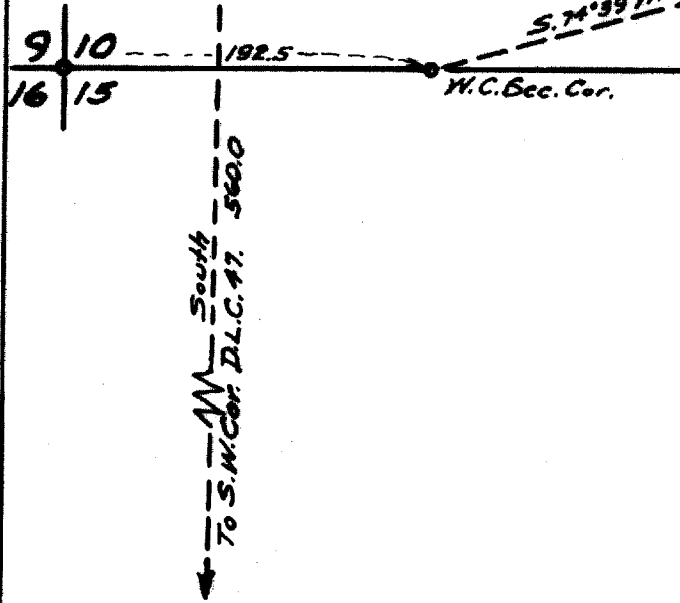
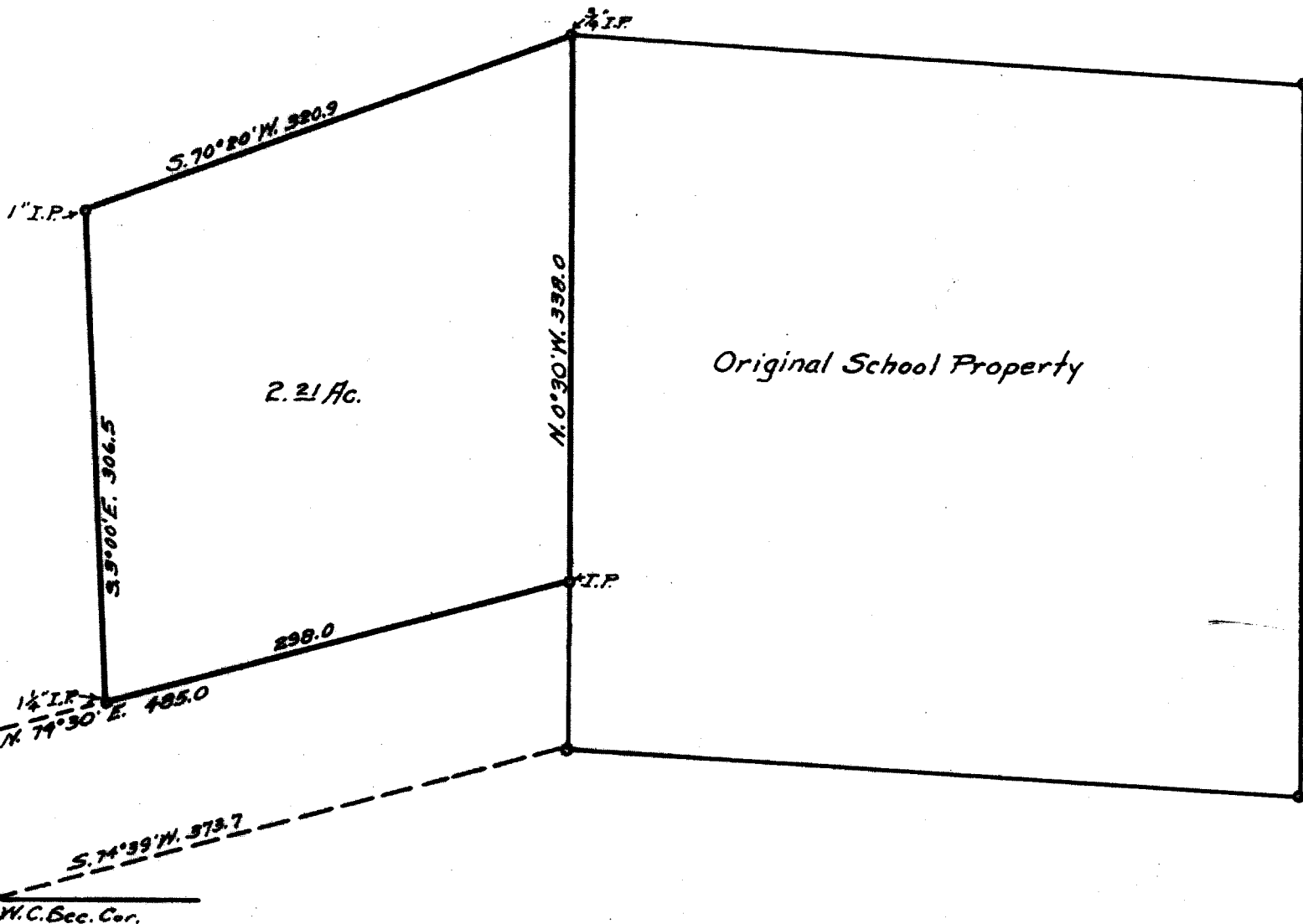


FILED
RECEIVED

MAR 6 1967

COUNTY SURVEYOR
DOUGLAS COUNTY ORE.

Bearings from Orig.
School Property



COUNTY SURVEYOR'S OFFICE
DOUGLAS COUNTY, OREGON.

SURVEY FOR
DAYS CREEK SCHOOL, SEC. 10, T. 30 S., R. 4 W.
Geo. J. WENDEROTH, DEPUTY. Feb. 1967
Scale 1" = 100ft.

REGISTERED
OREGON
LAND SURVEYOR

Geo. J. Wenderoth

MARCH 10, 1944
George J. Wenderoth
5

COUNTY SURVEYOR'S FILE DATA
DO NOT REMOVE FROM OFFICE

657 No. 54/34-7