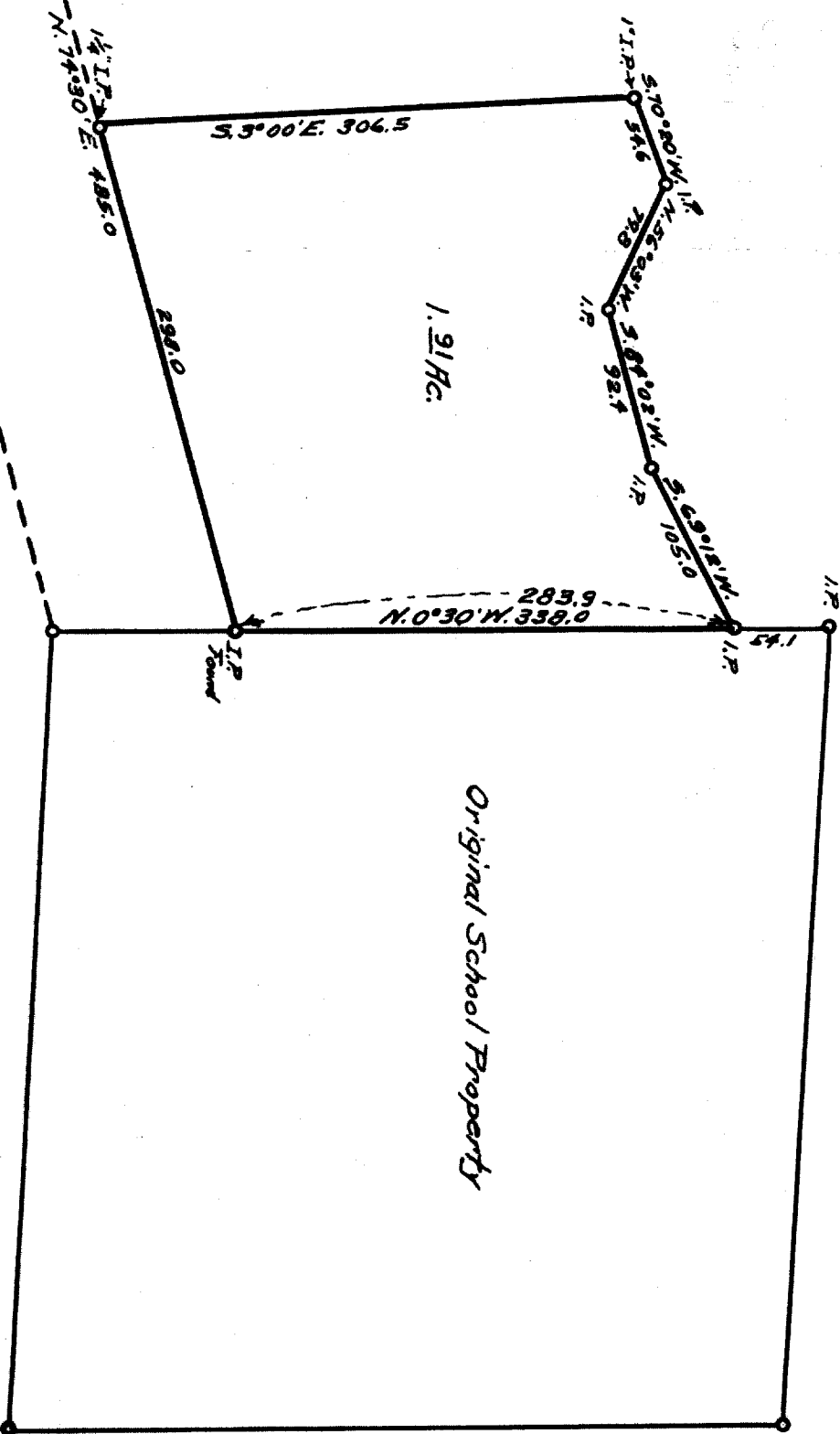


Bearings from Original School Property



Original School Property

COUNTY SURVEYOR'S OFFICE
DOUGLAS COUNTY, OREGON.

SURVEY FOR
DAYS CREEK SCHOOL, SEC. 10, T. 30S, R. 4W.
Geo. V. WENDEROTH, Deputy, May 1967.
Scale 1" = 100ft.

FILED
RECEIVED

MAY 26 1967

PROPERTY SURVEYORS FILE DATA
DO NOT REMOVE FROM OFFICE

REGISTERED
OREGON
LAND SURVEYOR

George J. Wenderoth

MARCH 14, 1944
George J. Wenderoth

South
To S.W. Cor. D.L.C. 47 560.0

C.S. File No. 54
COUNTY SURVEYOR
DOUGLAS COUNTY, ORE.