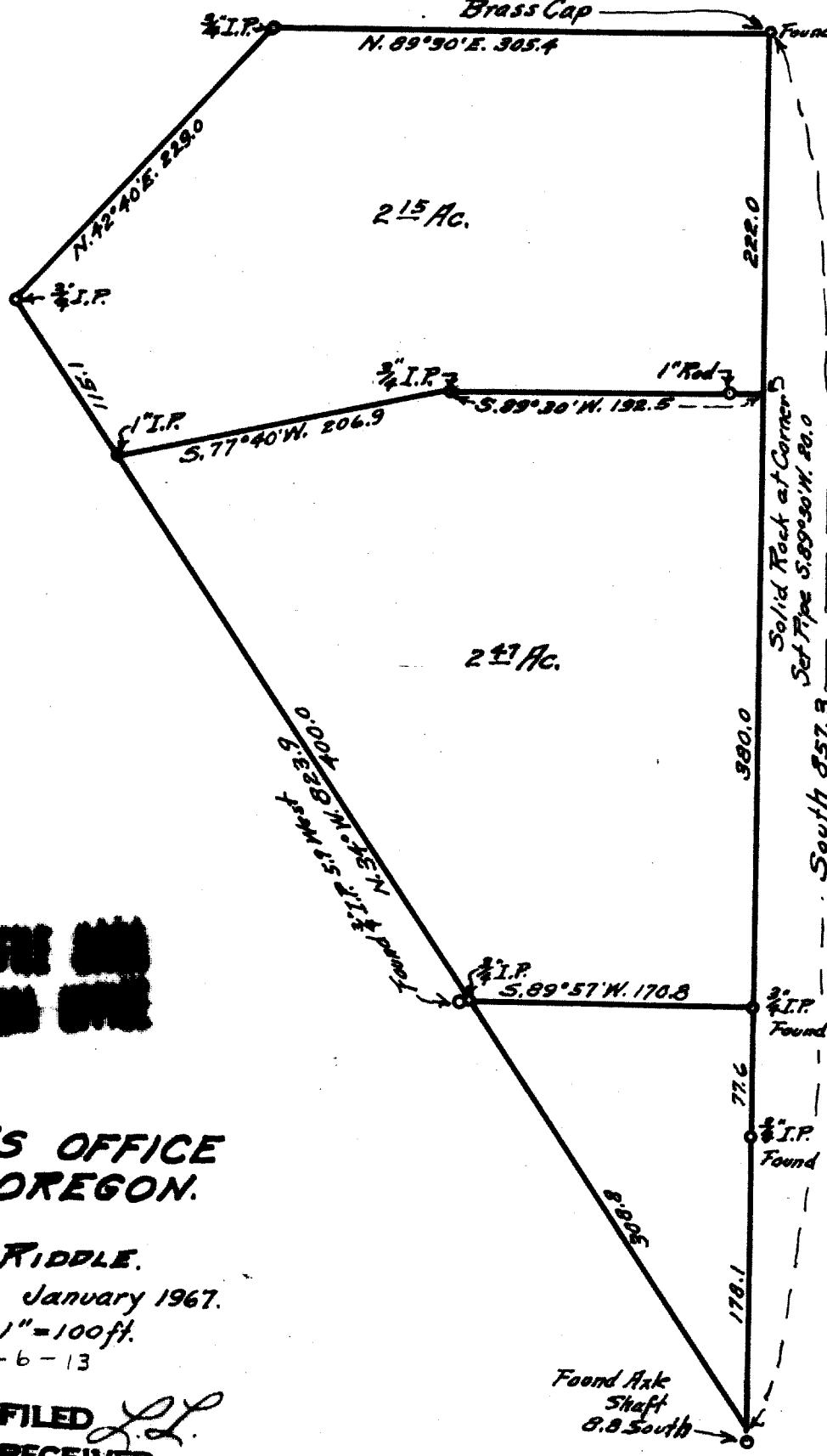


N.E. Cor. J.C. Vandenberg
 D.L.C. No. 47
 Brass Cap

East Line taken for
 North & South Line



**COUNTY SURVEYOR'S OFFICE
 DOUGLAS COUNTY, OREGON.**

**COUNTY SURVEYOR'S OFFICE
 DOUGLAS COUNTY, OREGON.**

**SURVEY FOR
 M.G. HIXSON IN CITY OF RIDDLE.
 GEO. J. WENDEROTH, DEPUTY. January 1967.**

Scale 1" = 100ft.
 T 30-6-13

REGISTERED
 OREGON
 LAND SURVEYOR

Geo. J. Wenderoth

MARCH 18, 1944
 George J. Wenderoth

FILED *J.L.*
 RECEIVED

JAN 19 1967

COUNTY SURVEYOR
 DOUGLAS COUNTY, ORE.

Found Ark
 Shaft
 8.8 South