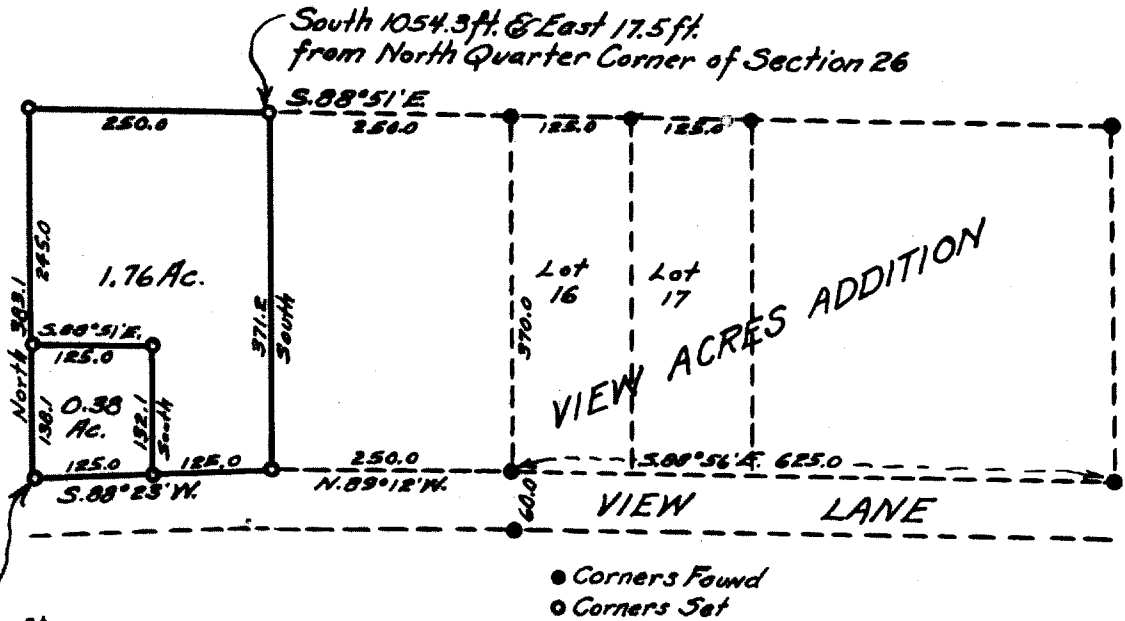




South 1432.7 ft. & West 232.5 ft.
From Quarter Corner



COUNTY SURVEYOR'S OFFICE
 DOUGLAS COUNTY, OREGON.
 SURVEY FOR
 M.A. Merritt in
 SECTION 26, T.30S., R.3W., W.M.
 Geo. J. Wenderoth, Deputy. May 1966
 Scale 1" = 200ft.

FILED
RECEIVED

MAY 6 1966

COUNTY SURVEYOR
DOUGLAS COUNTY, ORE.

DO NOT REMOVE FROM OFFICE

REGISTERED
OREGON
LAND SURVEYOR

Geo. J. Wenderoth

MARCH 10, 1944
George J. Wenderoth
5

NE 1/4

56/21-4