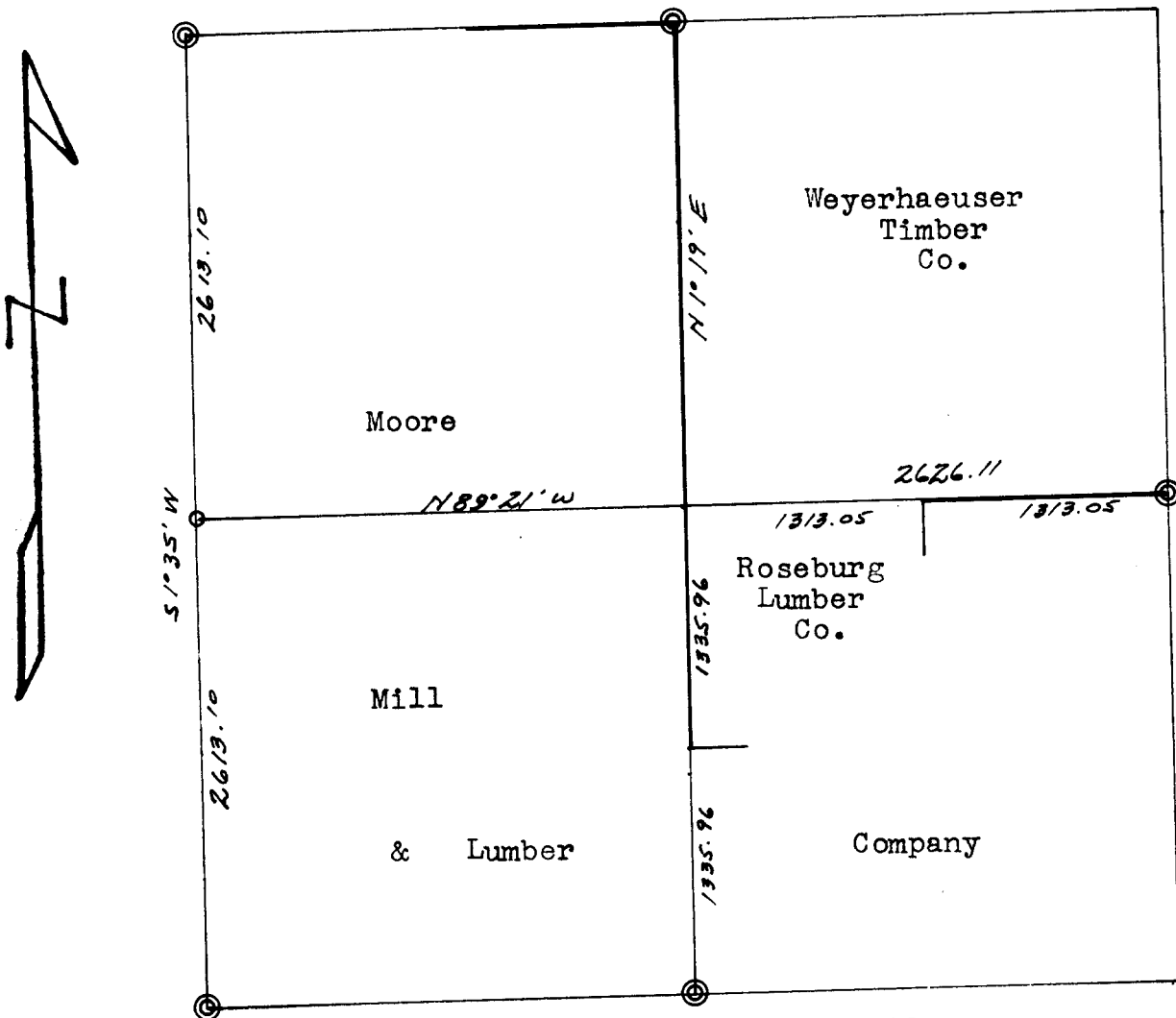


SURVEY TO SUBDIVIDE SECTION 6 T. 30 S. R. 8 W.W.M.
IN DOUGLAS COUNTY, OREGON



**COUNTY SURVEYORS FILE DATA
DO NOT REMOVE FROM OFFICE**

Survey For: Moore Mill & Lbr. Co.
 Bearings: Magnetic with Declination 20°15' E
 Methods used: Transit and tape on West line.
 Staff Compass and tape on 1/4 lines.
 Section Corner Monuments found shown: ©
 Corner Monuments set shown: ○
 Cutting Lines Blazed and painted RED shown: —
 Scale of Map: 1" to 1000 ft.
 Date of Survey: April and May 1965

FILED
RECEIVED

JUN 9 1965

COUNTY SURVEYOR
DOUGLAS COUNTY, ORE.

REGISTERED
OREGON
LAND SURVEYOR

Forrest J. Hales
OCTOBER 24, 1958
FORREST J. HALES
453

FILED *LL*
RECEIVED

JUN 9 1965

COUNTY SURVEYOR
DOUGLAS COUNTY, ORE.

**COUNTY SURVEYORS FILE DATA
DO NOT REMOVE FROM OFFICE**

CORNER MONUMENTS AND BTS FOR SECTION 6
T. 30 S., R. 8 W. W. M. IN
DOUGLAS COUNTY, OREGON

N 1/4 Corner is a Brass Cap and Bearing Trees.
NW Corner is a Brass Cap and Bearing Trees
SW Corner is a Brass Cap and Bearing Trees
S 1/4 Corner is a Stone and BT Stumps as described.
E 1/4 Corner is a Brass Cap very recently set by BLM.

Description of Corner Markers and Bearing Trees
for corners established in this survey.

1/4 Corner (West) is a 1/2" Pipe Post from which:
8" D. Fir Brs. N 68° E 3.2 ft. marked "BT S6 30-8"
6" W. Fir Brs. West 9.7 ft. marked "BT S 1"
A Fir stub with an old Yellow Tag Brs N 69° E about
40 to 50 ft. The Corner is about 150 ft. West of
the Creek.

Center 1/4 is a Cedar Post, unmarked, from which:
22" W. Fir Brs. S 12° W 17.0 ft. marked "BT 1/4 C S6"
28" D. Fir Brs. S 88½° E 17.0 ft. marked "BT C 1/4 S6"
This Corner is about 30 ft. North of an old cat road and
and near the top of a steep East slope.

E-C 1/16 is a Madrone post, unmarked, from which:
10" Madrone (crooked tree) Brs. N 78½° W 13.5 ft. marked
"BT E-C 1/16"
20" W. Fir Brs. N 18½° E 8.0 ft. marked "BT E-C 1/16"
This Corner is on the top of a spur ridge very close to
the old cutting line.

S²C 1/16 is a wood post, No trees near by to mark

REGISTERED
OREGON
LAND SURVEYOR

Forrest J. Hales
OCTOBER 24, 1965
FORREST J. HALES
453

C. S. File No. 54/6 B