

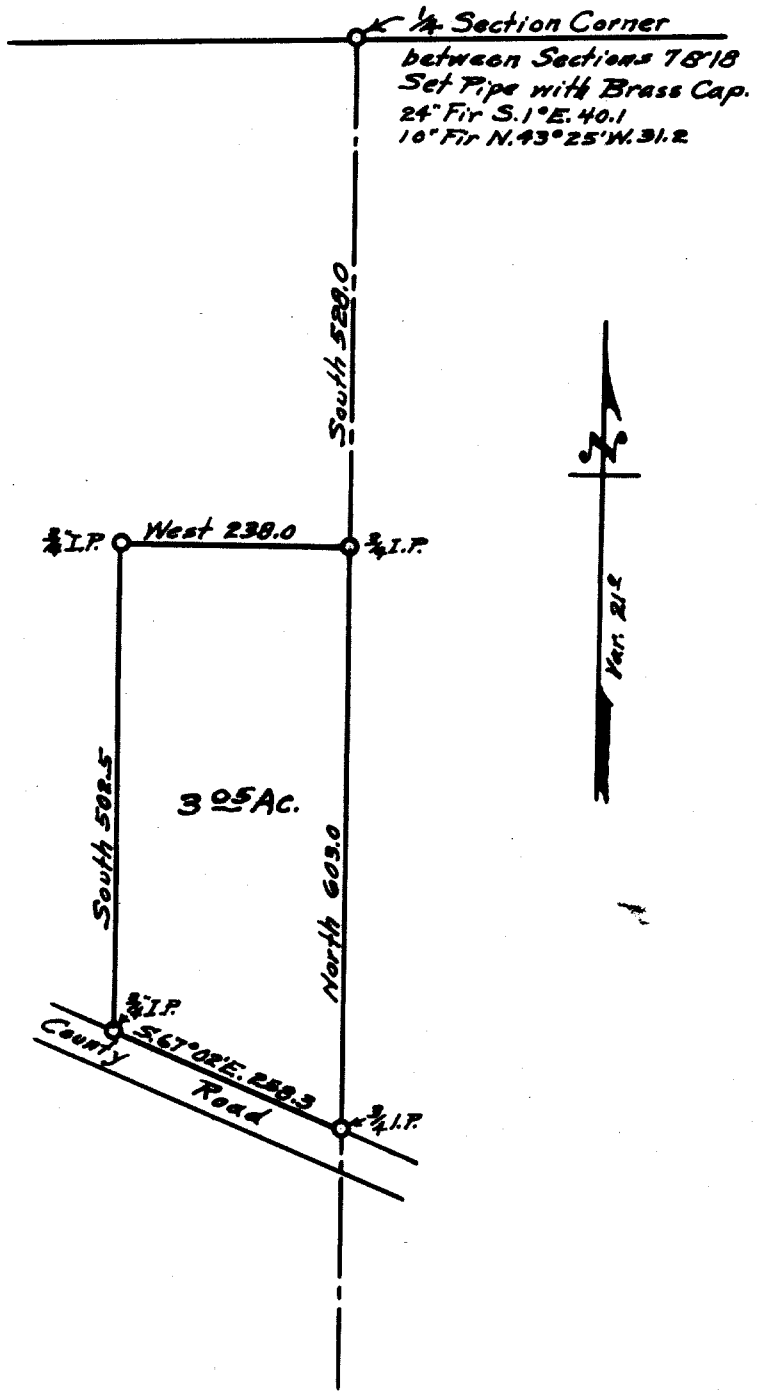
DO NOT REMOVE FROM OFFICE

FILED
RECEIVED

JUN 10 1965

COUNTY SURVEYOR
DOUGLAS COUNTY, ORE.

COUNTY SURVEYOR'S OFFICE
DOUGLAS COUNTY, OREGON.
SURVEY FOR
JIMMY FOSTER IN
SECTION 18 T. 32 S., R. 4 W. W.M.
Geo. J. WENDEROTH, DEPUTY. JUNE 1965
Scale 1" = 200ft.



REGISTERED
OREGON
LAND SURVEYOR

Geo. J. Wenderoth

MARCH 10, 1944
George J. Wenderoth
5