

Witness

537 | 577

T215 R

Renew Sec

Feb 1965 C.S. BRASSCAP & sawed STUMPS
OF BTs as follows - See Ren. #2 & #11

26" FIR STUMP N. 17° E. 6 8 ft.

scribe visible - we set 5/8" x 30" I.R.

ON BEARING at 5 1/2 ft. FROM Wit. COR. at Base of BT.

24" FIR STUMP S. 75° E. 16 9 ft.

Not 15 1/2 ft. - scribe visible - set 5/8"

x 30" I.R. on BEARING at 15 1/2 ft. FROM Wit. COR. at Base of BT.

& set 6 ft. steel fence post

along side BRASS CAP. No TREES

available for new BTs - Witness

COR. lies ON TOP of CUT BANK

35 ft S. of U.S. Rd. # 2138

at True COR. point set 5/8"

I.R. x 15" in sandstone in Roadway

flush with surface 3 1/2 ft. west of

Ditch line. Witness COR. Bears

South 34 ft. (Note - See OVER)

May 24, 1968

V.R.T.
J.H.
V.P.

(Signature: V.R. Tracy)

(OVER)

#16
#20

O.K. J. W. B.

C.S. File No.

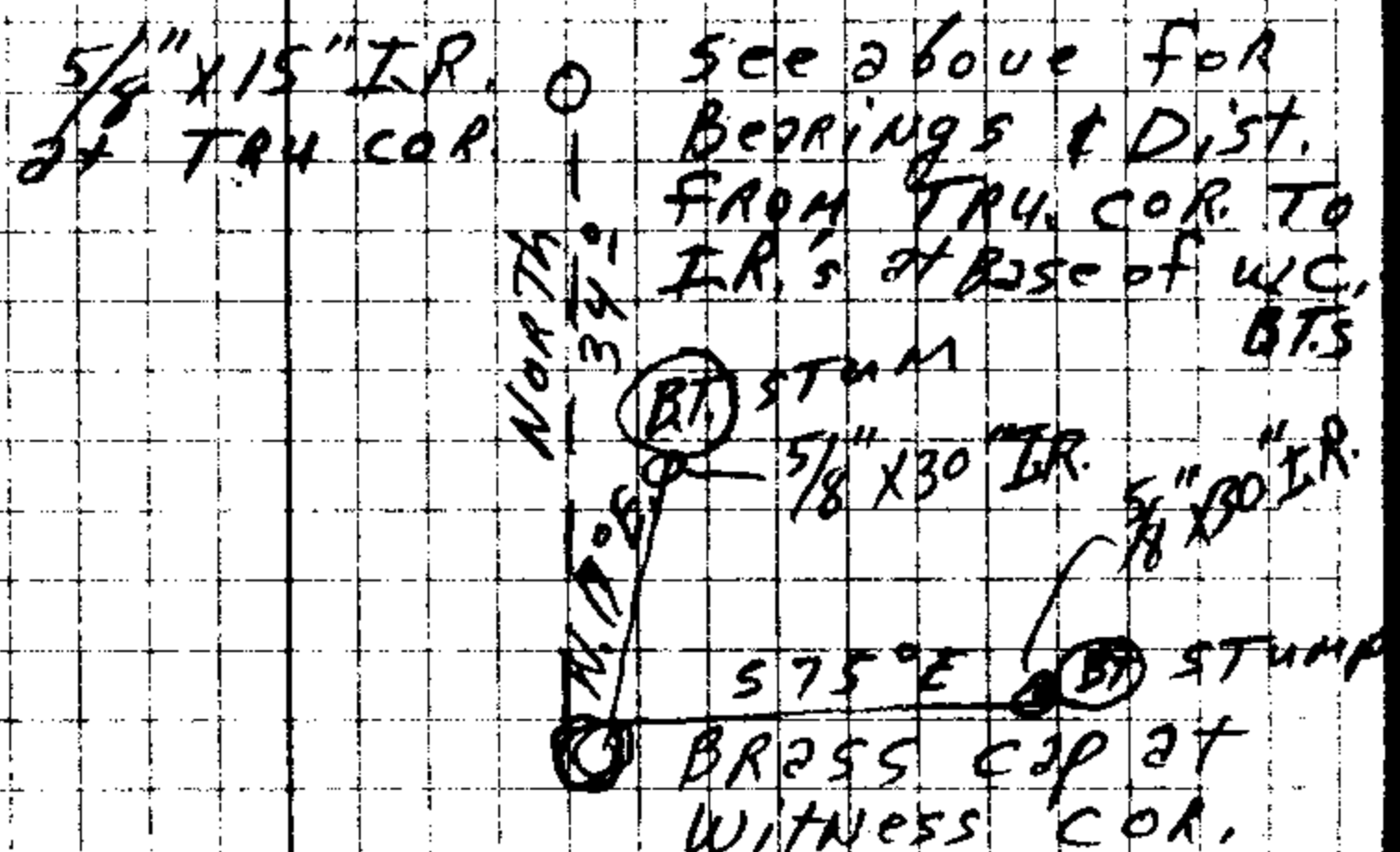
54/1-3

The $\frac{5}{8}$ " x 30" I.Rods Set at Base of
 Witness Cor. B.T.S are as follows from
 $\frac{5}{8}$ " x 15" I.R. set at True Cor. point
 on edge of Roadway -

$\frac{5}{8}$ " x 30" I.R. Bears S. 19° E. 58 3/4 ft.
 This Rod is 6" above ground at
 Base of Wit. Cor. B.T. To S.E.

$\frac{5}{8}$ " x 30" I.R. Bears S. 3° E. 28° ft.
 This Rod is 6" above ground at Base
 of Wit. Cor. B.T. To N.E.

WRT





TRUE VOR.
TRUE
SET 3/4" R.

340'
SOUTH

6'-8"
N 17° E

525' E

W. C. 15'-4'

