

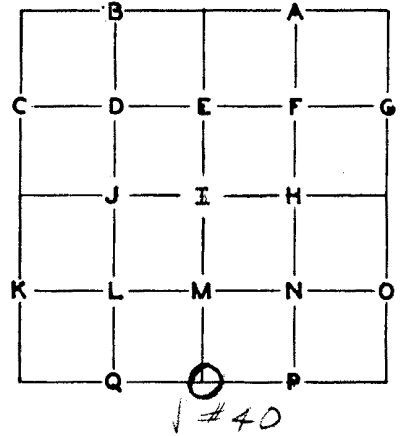
PUBLIC LAND CORNERS

WEYERHAEUSER TIMBER COMPANY
SPRINGFIELD BRANCH

TOWNSHIP 23S RANGE 3W

SECTION 34 CORNER S 1/4

COUNTY Douglas OREGON



GLO SURVEY RECORD

DATE: 1882
CORNER Post

PRESENT CONDITION - (DESCRIBE FULLY - USE PAGE 2 IF NEEDED FOR EXPLANATION.)

Post gone
Cruisers marks; LF & C/

ACCESSORIES:

	BEARING-	LINKS-	FEET-	
<u>7" Yew</u>	<u>N 40° W</u>	<u>15</u>	<u>9.9</u>	<u>Now leaning - Scribe partially visible</u>
<u>6" Dogwood</u>	<u>N 75° E</u>	<u>20</u>	<u>13.2</u>	<u>Gone</u>

W. T. Co. SURVEY RECORD
DATE: 6-1-41

PRESENT CONDITION: _____

Cruisers

Orig. B.T. - Tag on yew S 40° E 9.9 O.K.

CORNER SET: 3/4" X 31' Monel pipe MAG. DECL: 20° E

BEARING AND DISTANCE TO ABOVE IDENTIFIED SURVEY ACCESSORIES:

BEARING-	FEET-	SURVEY -	
<u>N 40° W</u>	<u>9.9</u>	<u>GLO</u>	<u>original yew B.T.</u>

CS 53/107-13

ACCESSORIES ADDED THIS DATE:

MAGNETIC DECLINATION

BYCE 57
20° E

	BEARING	FEET	ORIG. B.T.	"W" NAIL	PLATE	BRASS DISC
48" Fir	S 53° W	54.7		✓	✓	
36" Cedar 48"	N 30° E	49.0		✓	✓	
7" Yew (June 1941)	N 40° W	9.9	✓		✓	

IDENTIFIED ON PHOTO:

INFORMATION ON LOCATION OF CORNER AS NOW SET:

GROUND COVER: *Sword fern, Oregon grape, Salal, Cedar, hemlock & D. Fir.*
(USING FORM LINES SKETCH TOPOG AT CORNER ON PAGE 2 PLAT)

SLOPE FACES (GIVE BEARING IN DEGREES) *540° E* ON MINUS (-) *70 %*

FROM CORNER -

NORTH: *+25% about 150'*

SOUTH: *-32% about 200'*

EAST: *-29% about 140'*

WEST: *+26 about 100'*

WORK DONE FOR W. T. CO.:

FIELD NOTES IN BOOK:

BY: *M. D. Hale* DATE: *3-13-58*
ENGINEER - SURVEYOR

UNDER THE SUPERVISION OF:

ASSISTED BY: *Doug Warner, Eldon Case, W. Dixon, T. Vandershule & Bob Duncan*

COPIES SENT TO:

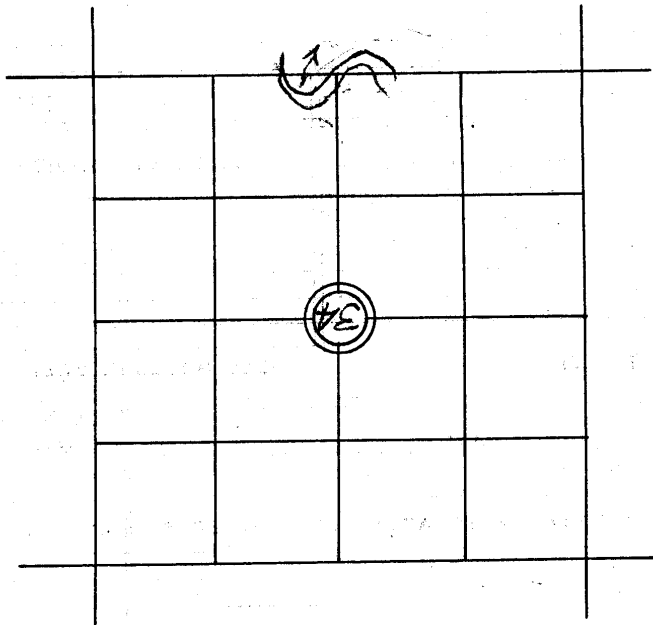
SEAL

PAGE 3

○--- REFERENCED CORNER
BY WEYERHAEUSER
METHOD.

○--- KNOWN CORNER.

LINE MARKED BY NOTCH CUT IN BLAZE.



SECTION 34 TOWNSHIP 23 S RANGE 3 W