

UNITED STATES
 DEPARTMENT OF THE INTERIOR
 BUREAU OF LAND MANAGEMENT
 EUGENE DISTRICT OFFICE

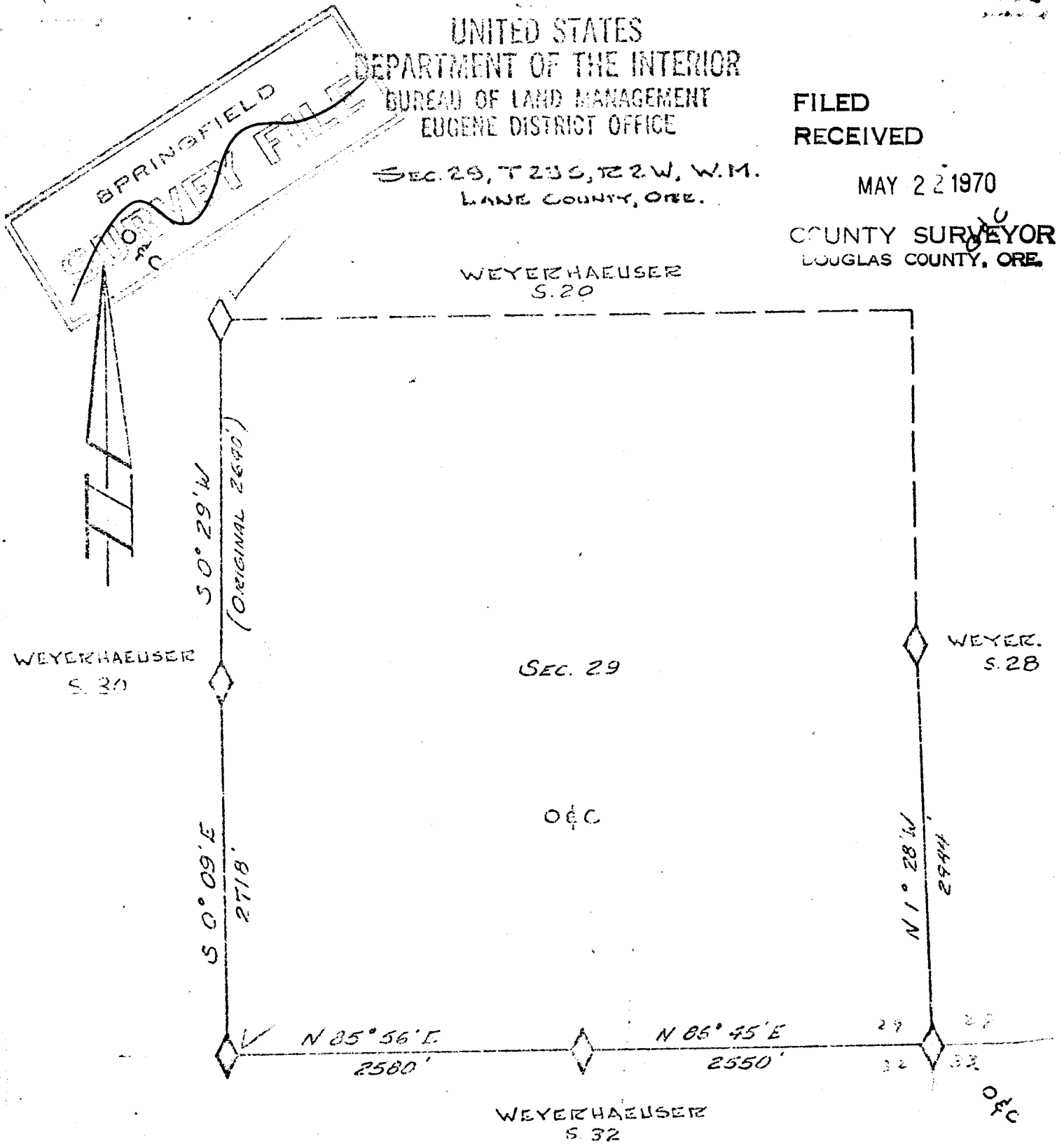
FILED
 RECEIVED

SEC. 29, T. 23 S., R. 2 W., W.M.
 LAKE COUNTY, ORE.

MAY 22 1970

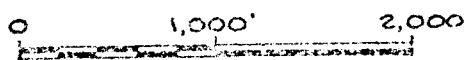
COUNTY SURVEYOR
 DOUGLAS COUNTY, ORE.

WEYERHAEUSER
 S. 20



LEGEND

- ◆ = Stake set by Weyerhaeuser
- ◆ = Stake set by BLM and Weyerhaeuser
- = Lines run, blazed and posted with aluminum tags
- - - = Projected lines



SCALE

C. S. File No. 53/106-4

SURVEY CONDUCTED SPRING 1967 WITH THEODOLITE. BEARINGS BASED ON SOLAR
OBSERVATION. DISTANCES WERE OBTAINED BY STADIA AND 200' STEEL TAPE.
TRUE LINES WERE BLAZED AND MARKED WITH ALUMINUM TAGS.

PARTY CHIEF - INSTRUMENT MAN:	RONALD VAN DOMELLEN	
HELPERS:	LEON EVANS	ELDON CASE
	DAVE BATES	LEN WILSON
	DAN MARTIN	KEN PERKINS
	TIM ZENKE	LEON WARREN
	CHUCK WRIGHT	
	ALAN CURTIS	

CORNER INFORMATION

19 | 20 NORTHWEST CORNER SEC. 29, T. 23 S., R. 2 W., WILL. MER.
30 | 29

ORIGINAL EVIDENCE

FOUND

Post

No Trace

10" Hemlock N40°E 19 lks.

Stump Remains Visible Scribe
On Down Tree

6" Hemlock S17°E 28 lks.

Windthrown

9" Hemlock S65°W 33 lks.

Windthrown Visible Scribe

8" Hemlock N54°W 20 lks.

Snag Visible Scribe

USED 3" DIAMETER STAKE SET AND REFERENCED BY WEYERHAEUSER PREVIOUSLY.

30 | 29 WEST QUARTER CORNER SEC. 29, T. 23 S., R. 2 W., WILL. MER.

ORIGINAL EVIDENCE

FOUND

Stone 14x6x6 ins.

Two Stones of Approximate
Size Out of Place. Could
Find No Marks, Possible Due
to Being Muddy.

15" Hemlock S57½°E 33 lks.

Standing Visible Scribe

8" Hemlock N70°W 33 lks.

Standing Visible Scribe

THE TREES WERE OPPOSING AND THE DISTANCES OVERLAPPED. SET 2x2 INCH STAKE USING HORIZONTAL DISTANCE FROM N.W. B.T. AND SLOPE DISTANCE FROM S.E. B.T. THESE DISTANCES MATCHED REASONABLY WELL AT THE PROPER BEARING. IT WAS NOT POSSIBLE TO MEASURE HORIZONTAL DISTANCE FROM THE S.E. B.T., BUT WAS EASILY DONE FROM THE N.W. B.T.

30 | 29 SOUTHWEST CORNER SEC. 29, T. 23 S., R. 2 W., WILL. MER.
31 | 32

ORIGINAL EVIDENCE

FOUND

Post	No Trace
18" Hemlock N37°E 4 lks.	Windthrown
40" Fir S49°E 36 lks.	Windthrown
30" Hemlock S52°W 31 lks.	No Trace
30" Hemlock N58°W 68 lks.	Standing Visible Scribe

SET 2x2 INCH STAKE AT RECORD BEARING (TRUE) AND DISTANCE FROM THE N.W. B.T.
THE OTHER EVIDENCE IS NOT USEABLE.

29 | SOUTH QUARTER CORNER SEC. 29, T. 23 S., R. 2 W., WILL. MER.
32

ORIGINAL EVIDENCE

FOUND

Stone 14x12x10 inches	Stone Approximate Dimensions Out of Place. Could Find No Marks, Possible Due to Mud.
20" Cedar N30°W 36 lks.	Broken at Stump But Scribe Visible On Down Tree
40" Fir S45°W 32 lks.	Standing Healed Face

SET A 2x2 INCH STAKE AT RECORD DISTANCES. BEARINGS WERE ERRATIC, POSSIBLY DUE TO ROCK BLUFF IMMEDIATELY ADJACENT TO CORNER.

29 | 28 SOUTHEAST CORNER SEC. 29, T. 23 S., R. 2 W., WILL. MER.
32 | 33

ORIGINAL EVIDENCE

FOUND

Post	No Trace
------	----------

ORIGINAL EVIDENCE

FOUND

28" Fir N28E 31 lks.	Standing Healed Face
14" Hemlock S42E 31 lks.	Standing Visible Scribe
28" Hemlock S28W 48 lks.	Standing Snag No Scribe Visible
6" Cedar N65W 37 lks.	Standing Healed Face

THE HORIZONTAL DISTANCES DID NOT MEASURE TO A COMMON POINT. SET 3 INCH STAKE AT HORIZONTAL DISTANCES FROM N.E. AND S.E. B.T.'s AND SLOPE DISTANCES FROM N.W. AND S.W. B.T.'s. THESE DISTANCES MEASURED TO A COMMON POINT AND THE BEARINGS WERE REASONABLY CLOSE. IT WAS NOT POSSIBLE TO MEASURE HORIZONTAL DISTANCES FROM THE N.W. AND S.W. B.T.'s, BUT IT WAS EASY TO MEASURE HORIZONTAL DISTANCES FROM THE N.E. AND S.E. B.T.'s.

Drove 1" pipe for corner point at location of above 3" stake. Glen W. Cleary 4/10/70

29 | 28 EAST QUARTER CORNER SEC. 29, T. 23 S., R. 2 W., WILL. MER.

ORIGINAL EVIDENCE

FOUND

Post	No Trace
14" Hemlock S74°E 36 lks.	Standing Visible Scribe
40" Cedar S31°W 20 lks.	Standing No Visible Scribe

SET 3" POST AT RECORD DISTANCES AND BEARINGS.