

COUNTY SURVEYORS FILE DATA
DO NOT REMOVE FROM OFFICE



SCALE
1" = 300'

N.W. CORNER
EBENEZER STEPHEN'S
DLC No 50 T255R6W.WM.

LOUIE V. SMITH PROPERTY

PLATED FROM DEED DESCRIPTION
SHOWING LOCATION OF
IMPROVEMENTS.

BEN. B. IRVING, REGISTERED CIVIL ENGR.
ROSEBURG OREGON

50°30'W 1260.0

CERTIFICATE: I certify that the improvements shown on this map, are shown in their correct location and that they are within the property lines of LOUIE V. SMITH as shown hereon.

B. B. Irving

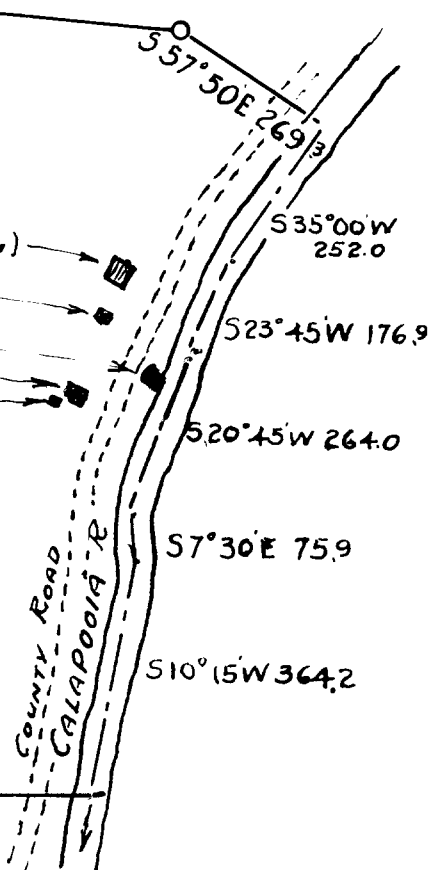
S84°55'E 1812.9

1353.0

- BARN 36'x36' (under Construction)
- CHICKEN HOUSE 20'x22'
- GARAGE 22'x24'
- DWELLING 28'3"x40'5"
- UTILITY BLDG. 8'2"x6'3"

LOUIE V. SMITH PROPERTY

S89°54'W 1680.8



S57°50'E 269.3
 S35°00'W 252.0
 S23°45'W 176.9
 S20°45'W 264.0
 S7°30'E 75.9
 S10°15'W 364.2

CS FILE FOLDER

CONTAINS

MORE

INFORMATION