

PART OF  
 REASON D. FOSTER D.L.C. 43  
 T. 26 S., R. 4 W., W.M.  
 OWNED BY  
 GEORGE KOHLHAGEN

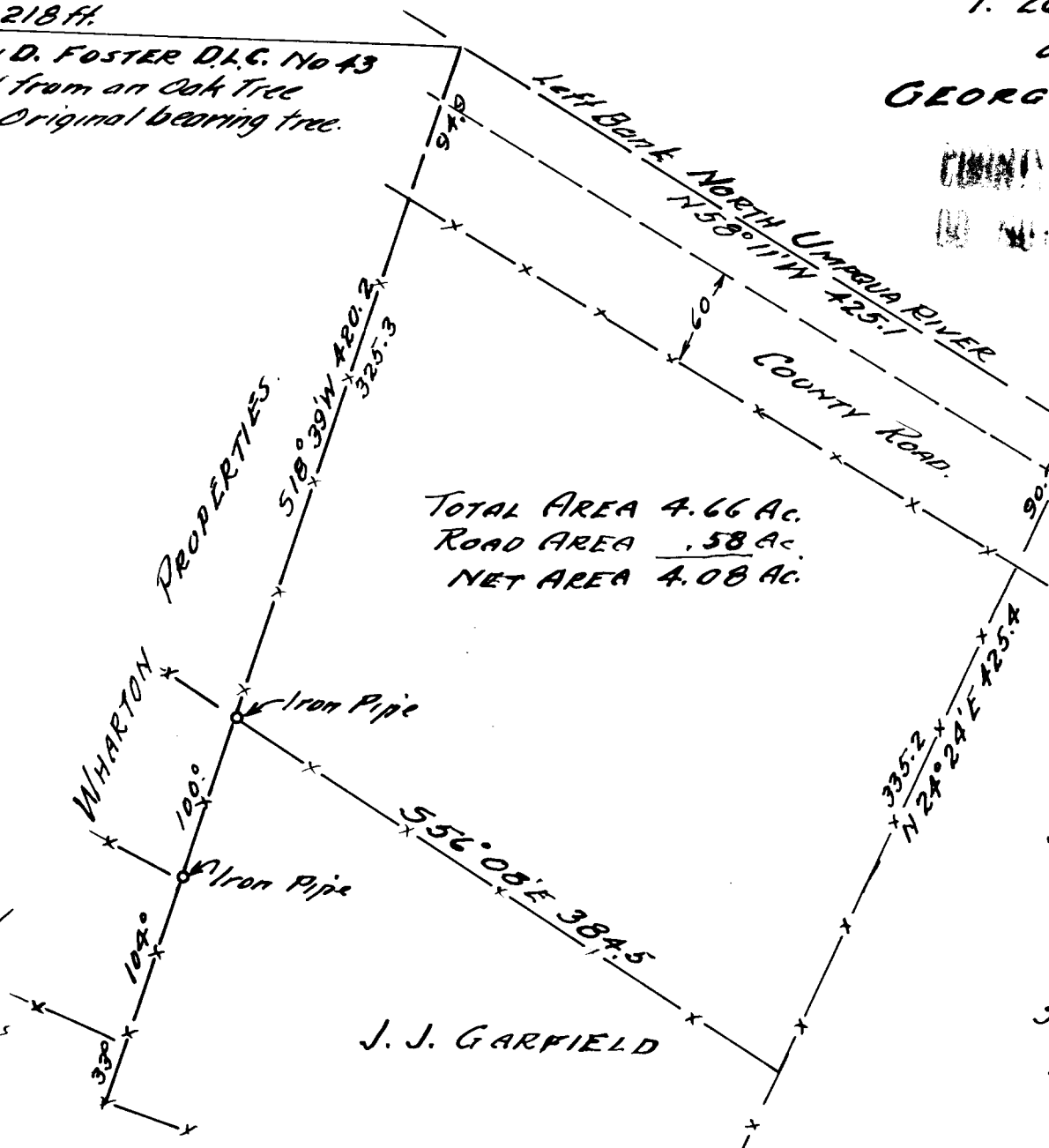
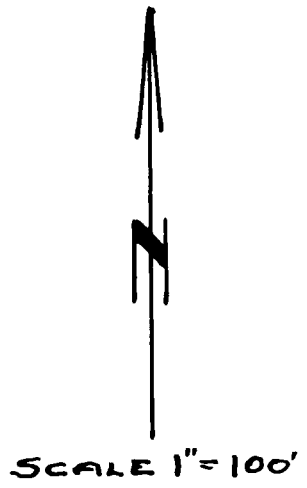
COUNTY SURVEYORS FILE DATA  
 (NO COPY KEPT IN OFFICE)

N 87° 50' W 2218 ft.  
 to N.W. Corner REASON D. FOSTER D.L.C. No 43  
 location determined from an Oak tree  
 believed to be an Original bearing tree.

Left Bank NORTH UMBAGUA RIVER  
 N 58° 11' W 425.1  
 COUNTY ROAD.

TOTAL AREA 4.66 Ac.  
 ROAD AREA .58 Ac.  
 NET AREA 4.08 Ac.

Stake  
 Iron Pin  
 10.2



All bearings computed  
 from a Solar Observation  
 for Meridian and angles  
 turned in deflection.

J. J. GARFIELD.

Surveyed June 26, 1941 by  
 BEN. B. IRVING  
 Deputy County Surveyor.

CS FILE FOLDER

CONTAINS

MORE

INFORMATION