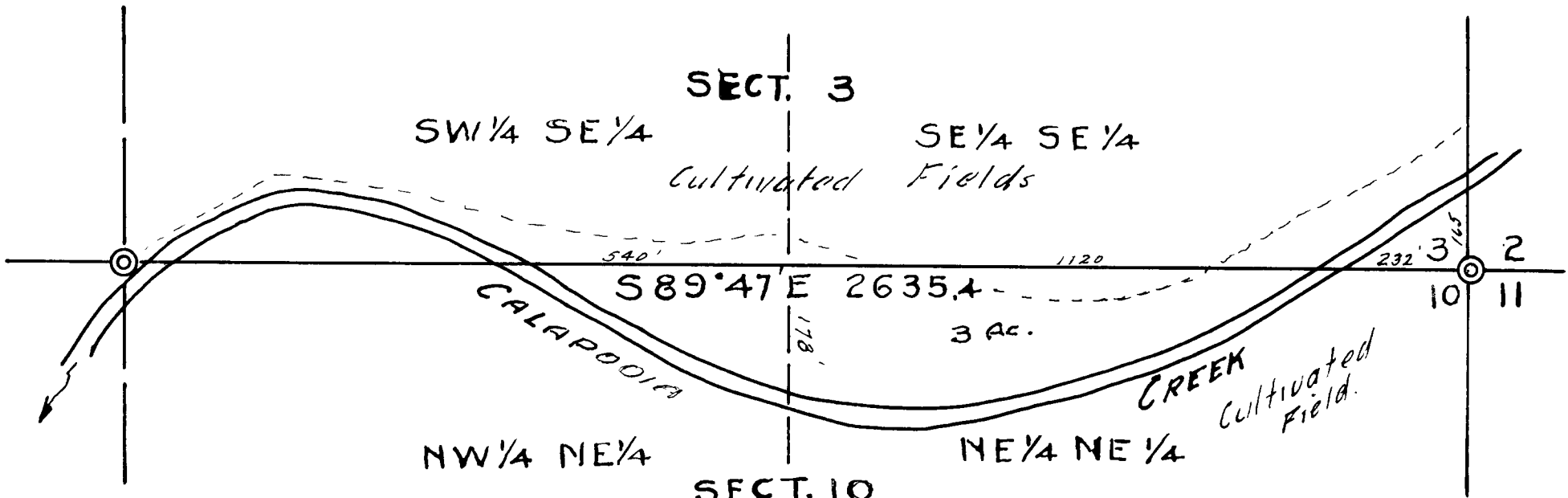


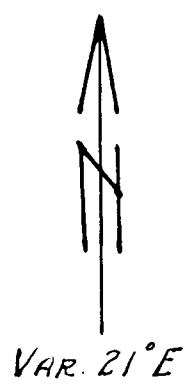
SECTION 3
SECTION 10

EAST HALF MILE BETWEEN
SECTIONS 3 & 10, T.25S. R.4W. W.M.
SHOWING LOCATION OF
CALAPOOIA CREEK
SURVEYED Nov. 8 1944 BY
BEN. B. IRVING, Registered CIVIL ENGR.
ROSEBURG, OREGON



1/4 Section Corner
Stone 6"x6" in fence line
36" Maple S 56° E, 54 lks.

Section Corner
Stone 6"x6"x18"-14" Under-
ground in field.
48" Fir S 85° E 9.00 Chs.
36" Fir N 8° E 140.4 Ft.
44" Fir N 60° W 105.5 Ft.
8" Oak S 81 3/4° W 198.8 Ft.



SCALE 1" = 300'

CS FILE FOLDER

CONTAINS

MORE

INFORMATION