

COUNTY SURVEYORS FILE DATA

REMOVED FROM LICENSE

MAP OF DEED DESCRIPTIONS IN
JOHN LEISER D.L.C. No. 53 (SECTION 23) T27S, R6W, W.M.

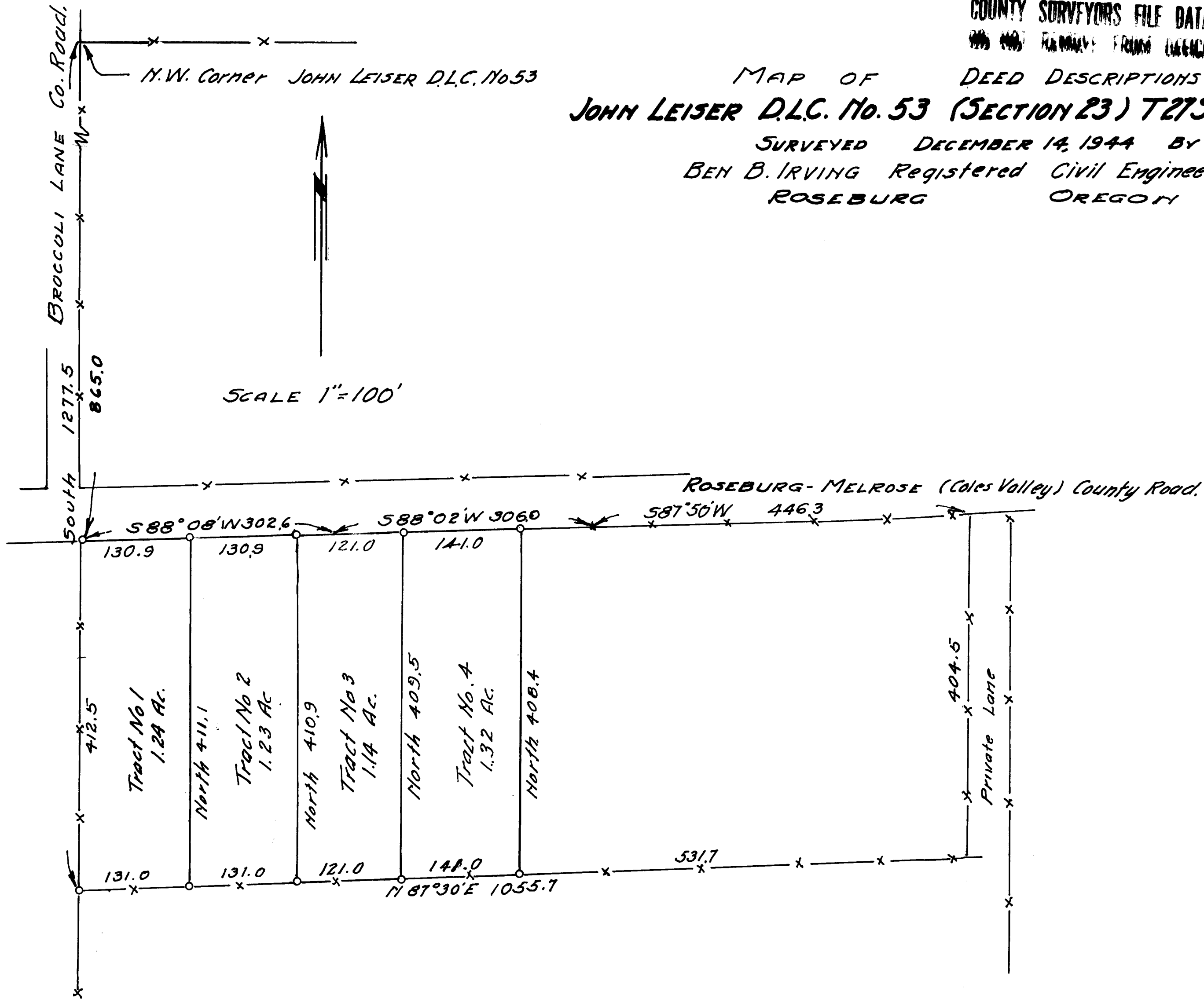
SURVEYED DECEMBER 14, 1944 BY
BEN B. IRVING Registered Civil Engineer
ROSEBURG OREGON

N.W. Corner JOHN LEISER D.L.C. No. 53

BROCCOLI LANE Co. Road.

SCALE 1"=100'

ROSEBURG-MELROSE (Coles Valley) County Road.



CS FILE FOLDER

CONTAINS

MORE

INFORMATION