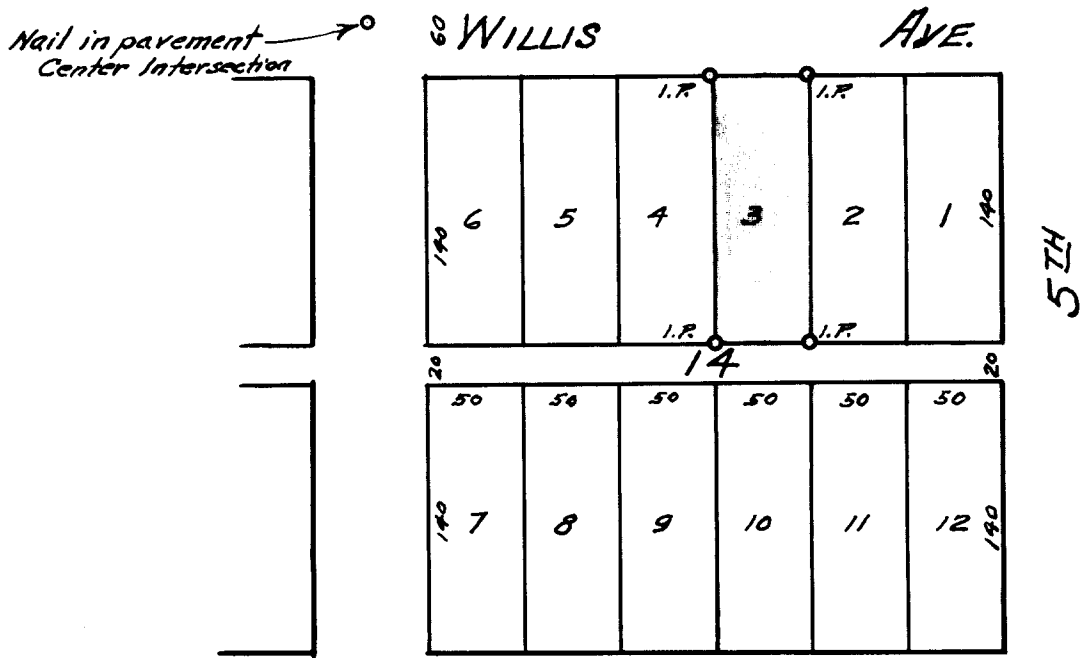
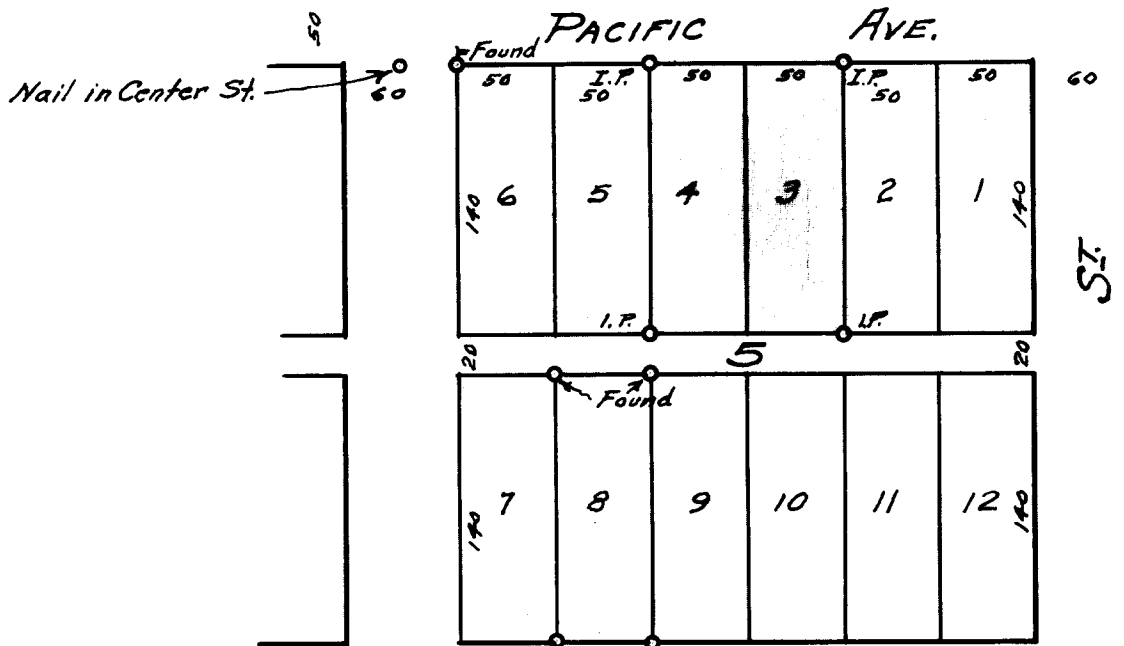


53/43-5



FILED RECEIVED

APR 2 1964

COUNTY SURVEYOR DOUGLAS COUNTY, ORE.

COUNTY SURVEYOR'S OFFICE DOUGLAS COUNTY, OREGON.

SURVEY FOR

Chas. Riebling, Lots 384 Blk. 5, Glendale.

J.M. Allen, Lot 3, Blk. 14 City of Glendale.

Geo. J. Wenderoth, Deputy. Mar. 1964

Scale 1" = 100ft.

T. 33-6 Sec 5

REGISTERED OREGON LAND SURVEYOR

Geo. J. Wenderoth

MARCH 10, 1944 George J. Wenderoth 5

COUNTY SURVEYOR FILE DATA DO NOT REMOVE FROM OFFICE